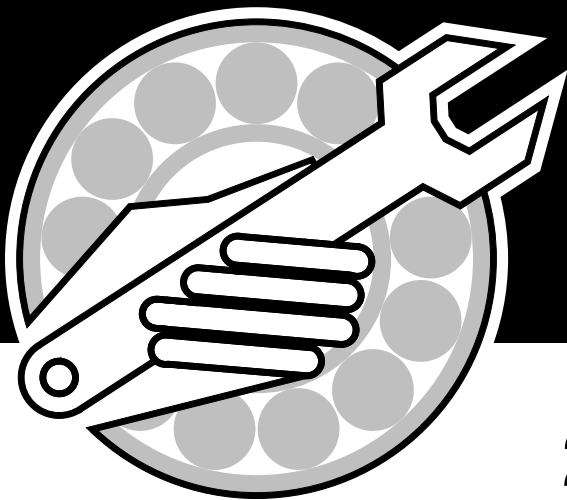




Parts Manual



2200 Bale Hiker

Part Number K56202-02B

IMPORTANT:

ALL ITEMS ARE IDENTIFIED WITH A PART NUMBER. Some of the smaller parts such as bolts, nuts, washers, etc. are not all shown, however, the quantity used are listed in the text for that section which they fit into. That particular quantity is always the quantity required for one complete assembly.

Smaller parts, which are welded together to construct a larger part, are not to be ordered as individual pieces, unless they have a part number to identify them.

Contact your nearest dealer for genuine repair parts. Dealers carry ample stock and are backed by the manufacturer and regional associations.

PROAG PAINT

Spray Cans:

Part Number	Description
W-4647	Red Spray Can
N31087	Sky White Spray Can

Litre Cans:

Part Number	Description
Z-10.....	Red Paint/Litre

MANUALS

Part Number	Description
K56200	Operator's Manual
K56201	Assembly Manual

Table of Contents

Section 1:	
Frame & Hitch	1-1
Frame and Rails	1-2
Hitch.....	1-4
Hitch Jack.....	1-6
Section 2:	
Push Bar, Fork & Drive	2-1
Rear Motor - Drive.....	2-2
Rear Motor - Drive - 2016.....	2-4
Indicator and Activator Arm	2-6
Bale Divider.....	2-7
Push Bars.....	2-8
Orbit Motor Assembly - 2016.....	2-10
Bale Deflector Assembly	2-11
Fork Arm.....	2-12
Section 3:	
Axle & Wheels.....	3-1
Axles	3-2
Axles and Tires.....	3-3
Section 4:	
Hydraulics	4-1
Push Bar with Line Lock Valve - Standard.....	4-2
Push Bar - Optional Split Drive.....	4-4
Fork	4-6
Cylinders	4-8
Selector Valve with Line Lock Valve.....	4-10
Section 5:	
Lighting and Safety Signs	5-1
Marking Lights.....	5-2
Safety Signs.....	5-4
Top View	5-4
Front View.....	5-5
Rear View	5-5
Side View	5-6
Index	i

Table of Contents

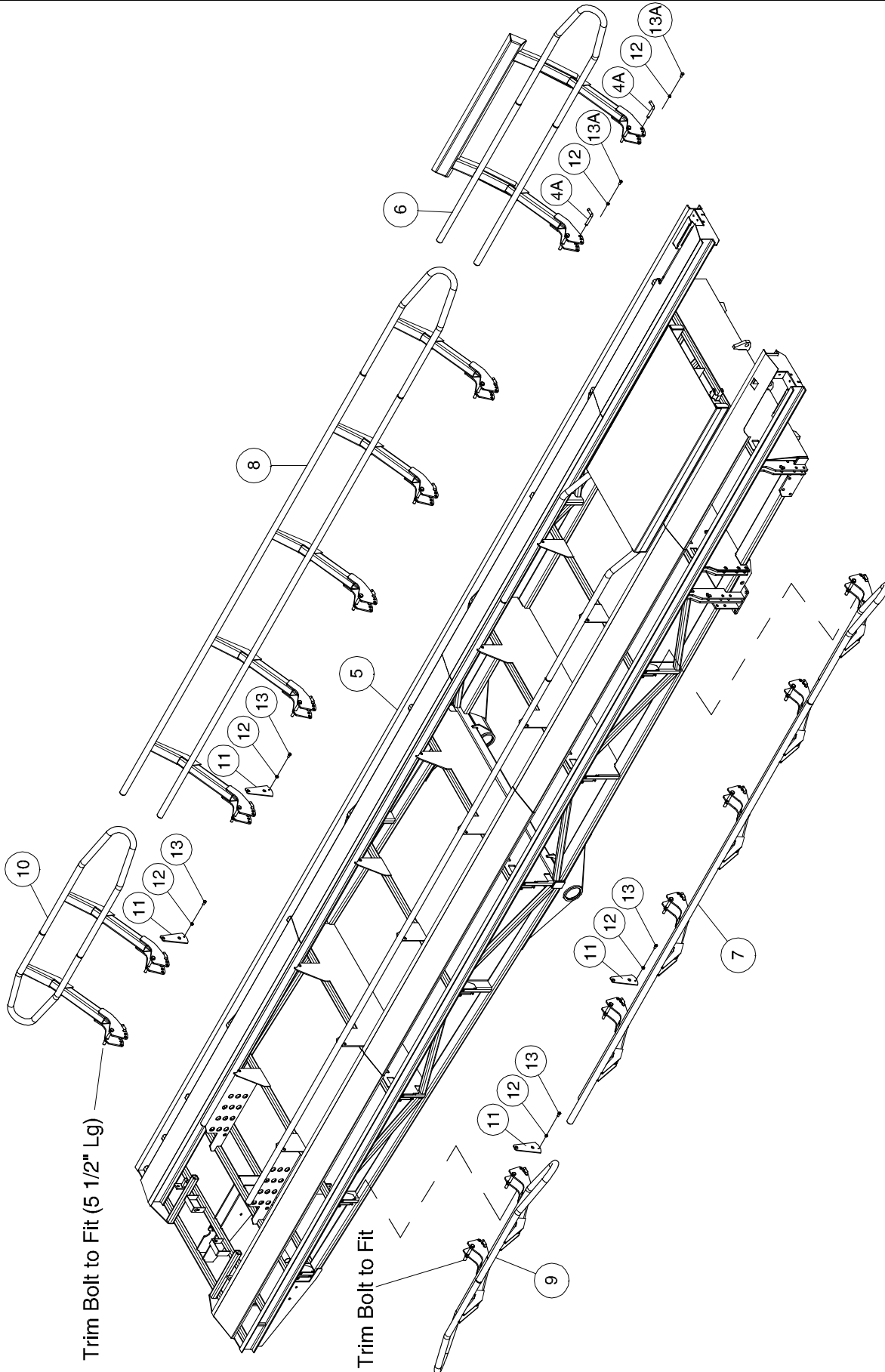
Notes

Section 1: Frame & Hitch

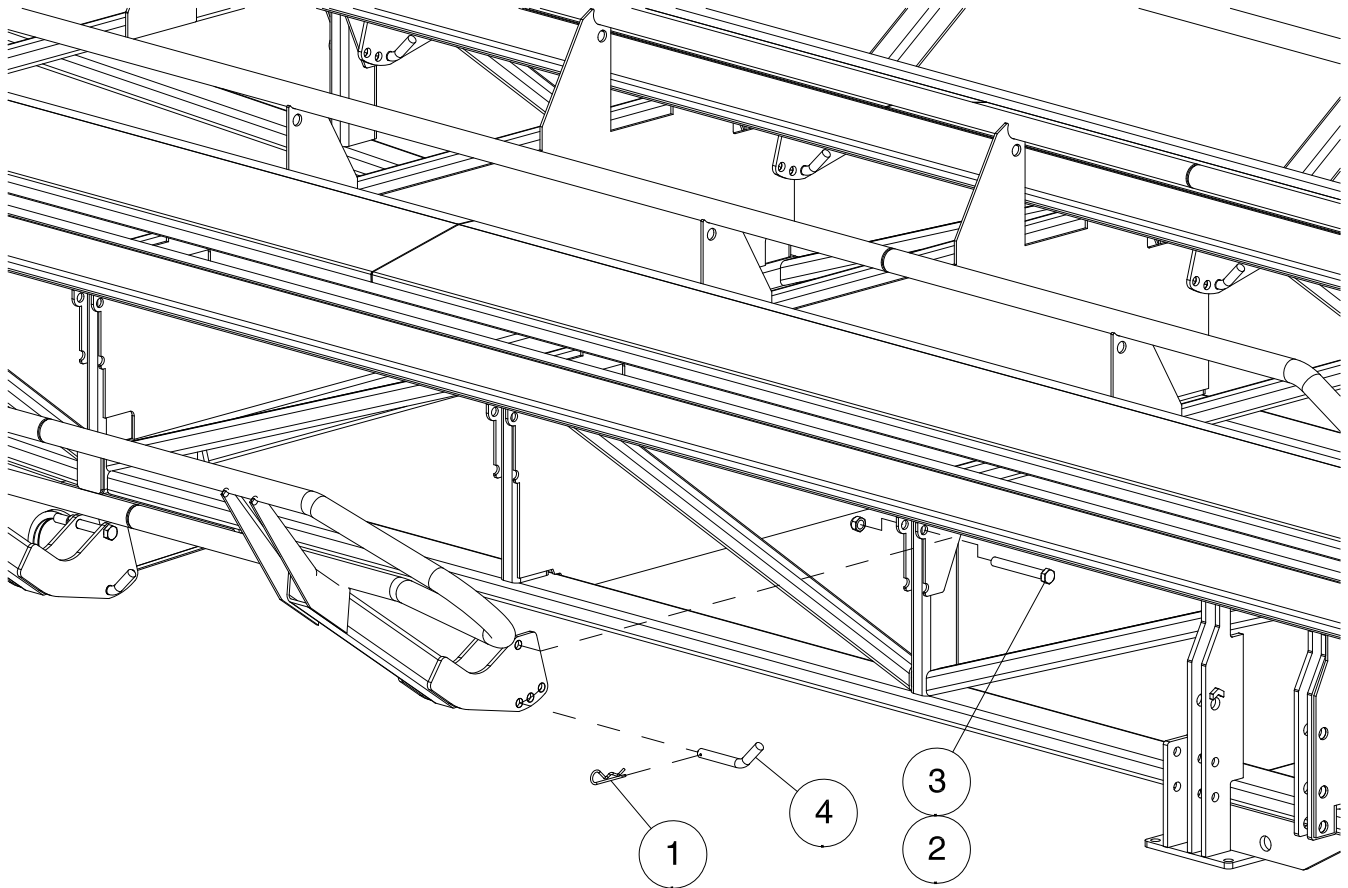
Section Contents

Frame and Rails	1-2
Hitch	1-4
Hitch Jack.....	1-6

Frame & Hitch Frame and Rails

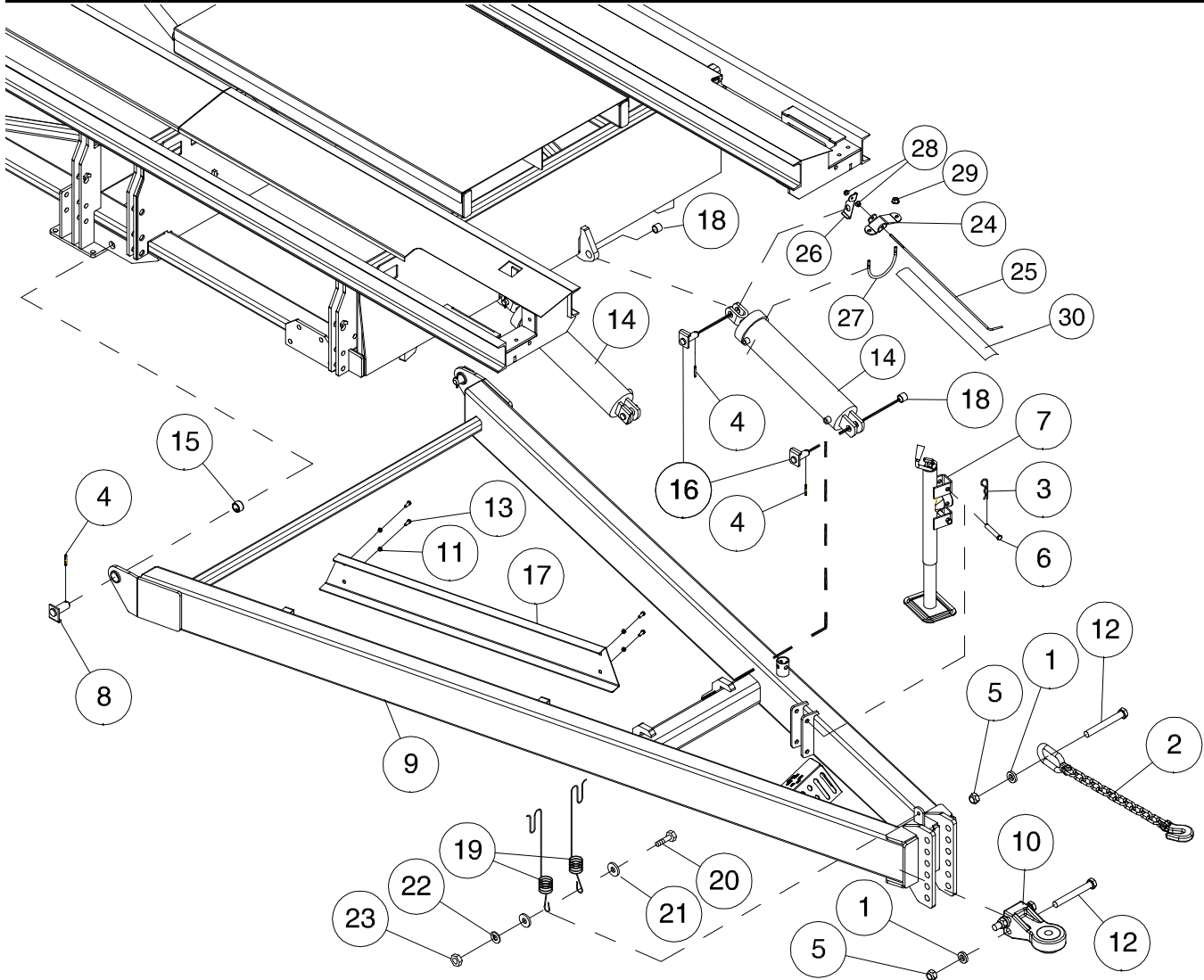


Frame & Rails



Item	Part No.	Description	Qty
1	D-5240	#10 Hairpin.....	16
2	D-5273	Locknut - 3/4 Unitorque.....	16
3	S42949	Hex Bolt - 3/4 x 5 1/8 Lg.....	14
	D-5558	Hex Bolt - 3/4 x 6 Lg - Used on Front Left Side Rail item 6.....	2
4	K49703	Pin - 3/4 Dia x 4 1/4 UL.....	14
4A	K58351	Pin - 3/4 Dia x 5 1/4 UL - Used on Front Left Side Rail item 6.....	2
5	K50380	Bed.....	1
6	K58353	Side rail - Front Left.....	1
7	K50823	Side rail - Right.....	1
8	K53994	Side rail - Left.....	1
9	K58132	Side rail - Rear Right.....	1
10	K58135	Side rail - Rear Left.....	1
11	K58138	Plate - Shear Bolt.....	4
12	10072	Hex Bolt - 1/4 x 1 Lg Gr 8.....	4
12A	C-1471	Hex Bolt - 1/4 x 1 3/4 Lg - Used on Front Left Side Rail.....	1
13	N22778	Locknut - 1/4.....	5
		Reflectors - Not Shown	
	N34476	Reflector - Red.....	2
	N34477	Reflector - Amber.....	10
	N34478	Reflector - Orange.....	2
		Slow Moving Sign - Not Shown	
	K-3830	Hex Bolt - 1/4 x 1/2 Lg.....	2
	N22778	Locknut - 1/4 Nylon Insert.....	2
	N34475	Slow Moving Vehicle Emblem.....	1
	N34643	Spade Mount Bracket (Male).....	1

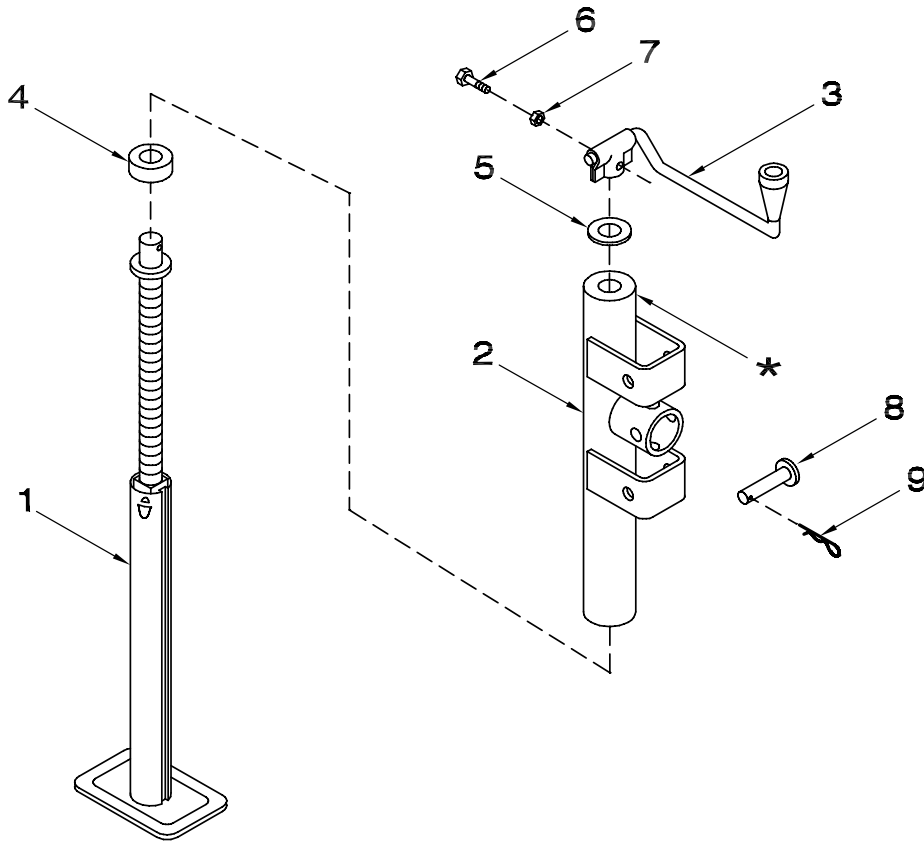
Frame & Hitch Hitch



Frame & Hitch - Hitch

Item	Part No.	Description	Qty
1	ASP-114	Draw Pin Washer - 3/8	3
2	C18761	Safety Chain - 40,000 lbs.....	1
3	W-131	Hair Pin - 0.148 Dia (#9)	2
4	D-5244	Spirol Pin - 1/4 x 2	2
5	D-5274	Locknut - 1 Unitorque.....	3
6	H10462	Adjustment Pin.....	2
7	H27963	Top Wind Jack	1
8	K49721	Pin - 1 1/4 Dia x 2 3/8 UL.....	2
9	K50436	Hitch	1
10	K51092	Ball Hitch.....	1
11	M-3388	Locknut - 3/8 Unitorque.....	4
12	S39487	Hex Bolt - 1 x 8 Lg.....	3
13	W-475	Hex Bolt - 3/8 x 1 Lg.....	4
14	C26845	Cylinder - 4 1/2 x 18 Lg	2
15	C42939	Bushing - Connex - 1 5/8 OD x 1 1/4 ID x 1 Lg.....	2
16	K51066	Pin - 1 Dia x 2 1/4 UL - Chrome Plated	4
17	K53624	Hose Cover	1
18	S47527	Bushing - Fiber - 1 ID x 1 1/4 OD x 1 Lg.....	4
19	W-7	Hose Holder	2
20	W-488	Hex Bolt - 1/2 x 2	1
21	C-333	Flatwasher - 1/2	2
22	W-525	Lockwasher - 1/2.....	1
23	W-516	Hex Nut - 1/2	1
24	K58173	Bracket - Bed Indicator.....	1
25	K58174	Rod - Bed Indicator	1
26	K58175	Bracket - Rod Holder.....	1
27	S47597	U-Bolt - 3/8 x 5 1/2 x 5 1/8 UL.....	1
28	D-5277	Locknut - 1/4 Serrated.....	2
29	S27987	Locknut - 3/8 Flange Center.....	2
30	K58417	Decal - Bed Tilt Scale.....	1

Frame & Hitch Hitch Jack



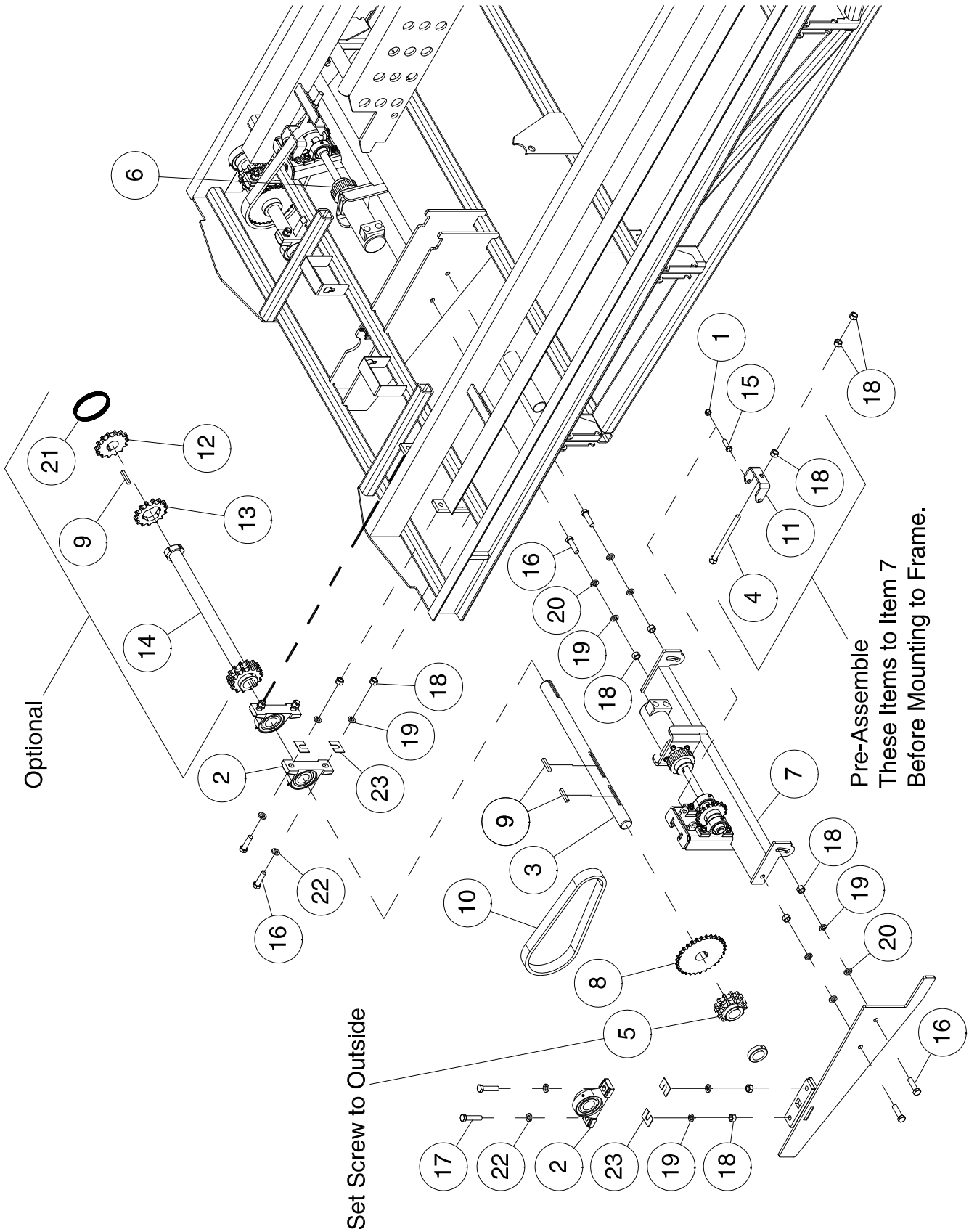
Item	Part No.	Description	Qty
1	H29011	Inner Tube Screw Assembly	1
2	N19966	Outer Tube	1
3	N19967	Handle Assembly	1
4	N19968	Thrust Bearing	1
5	N19969	Flatwasher	1
6	W-473	Hex Bolt - 5/16 x 1 1/2 Lg.....	1
7	D-5272	Locknut - 5/16 Unitorque.....	1
8	H10462	Button Head Pin.....	2
9	W-131	Hair Pin - 0.148 Dia (#9)	2
	H27963	Hitch Jack Assembly - 34 LG (Includes All Above Items)	

Section 2: Push Bar, Fork & Drive

Section Contents

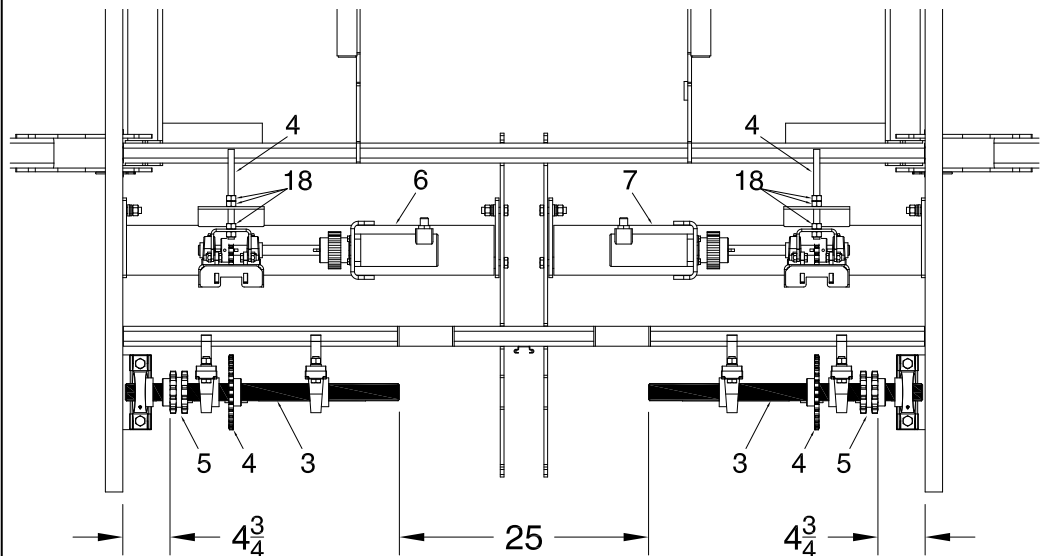
Rear Motor - Drive.....	2-2
Orbit Motor Assembly.....	2-4
Bale Divider.....	2-5
Push Bars.....	2-6
Indicator and Activator Arm	2-8
Bale Deflector Assembly	2-9
Fork Arm.....	2-10

Push Bar, Fork & Drive Rear Motor - Drive

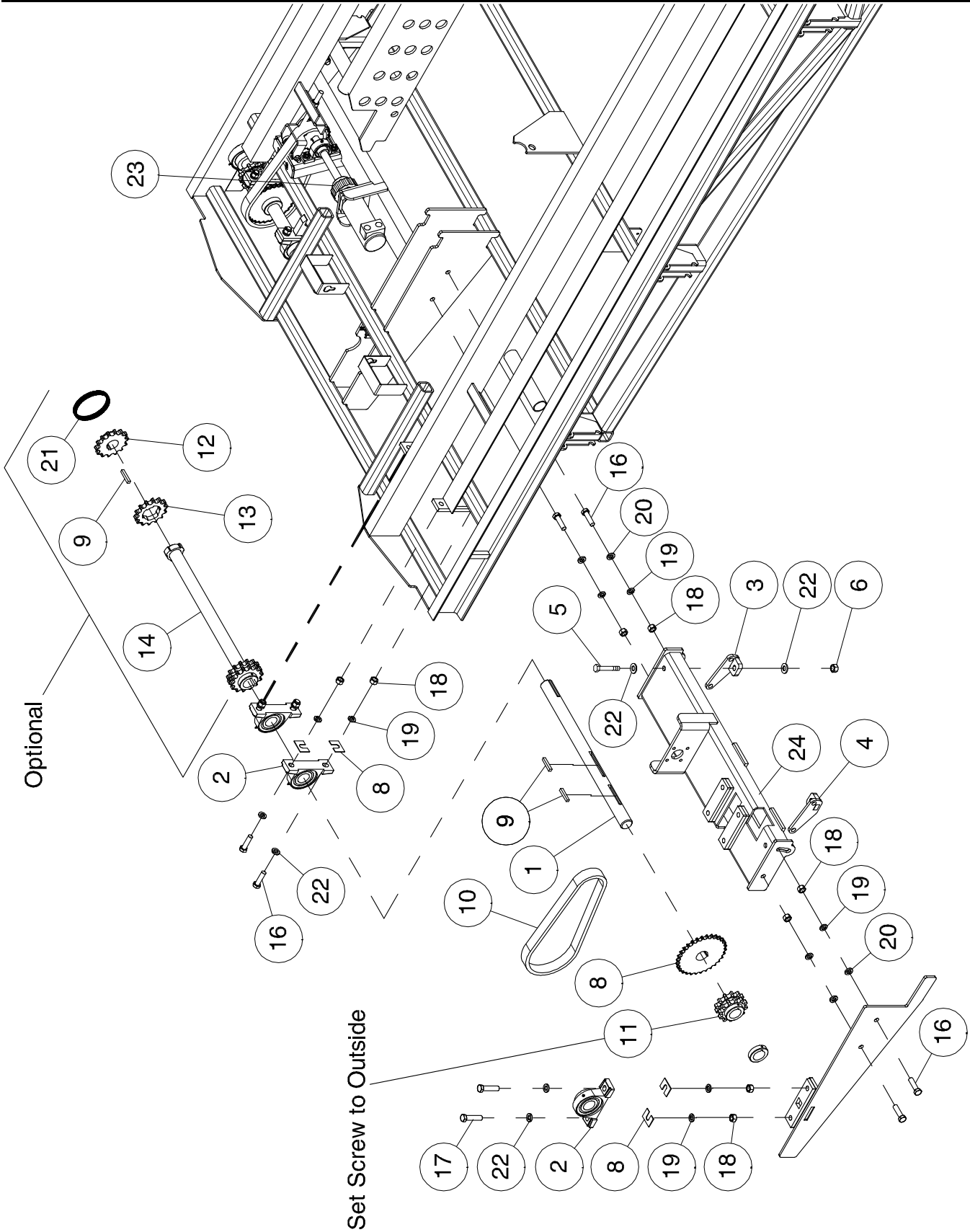


Push Bar, Fork & Drive - Rear Motor Drive

Item	Part No.	Description	Qty
1	F-3405	Locknut - 1/2 Unitorque.....	4
2	K24113	Pillow Block Bearing - 1 3/4 Dia w/Locking Collar.....	6
3	K51068	Drive Shaft - 1 3/4 Dia x 27 1/2 Lg.....	2
4	K53443	Front Tensioner Bolt - 5/8 x 8 1/4 Lg.....	2
5	K53446	Idler Sprocket - #80.....	2
6	*****	Orbit Motor Assembly - Left (See Orbit Motor Assembly page 2-8).....	1
7	*****	Orbit Motor Assembly - Right (See Orbit Motor Assembly page 2-8).....	1
8	K53608	Drive Sprocket - #60.....	2
9	K53609	Square Key - 3/8.....	6
10	K53611	Chain - Roller #60 x 59 Link.....	2
	W-807	Chain Link - #60 Connector	
11	K53612	Chain Tensioner.....	2
12	K53641	Drive Sprocket - #80.....	2
13	K53642	Coupler Sprocket - #80.....	2
14	K53643	Connector Shaft.....	1
15	S-776	Hex Bolt - 1/2 x 1 1/2 Lg.....	4
16	W-500	Hex Bolt - 5/8 x 2 1/4 Lg.....	16
17	W-502	Hex Bolt - 5/8 x 2 3/4 Lg.....	4
18	W-517	Hex Nut - 5/8.....	26
19	W-526	Lockwasher - 5/8.....	20
20	W-793	Washer - 5/8 ID x 1 1/8 OD x 3/16 Thick.....	8
21	K56005	Chain - Roller #80 x 13 Link - W/Connector.....	2
	K56011	Connector - #80 Roller Chain.....	2
22	W-629	Flatwasher - 5/8.....	12
23	T-4832	Shim - 22 GA - Use as required to align shafts.....	12



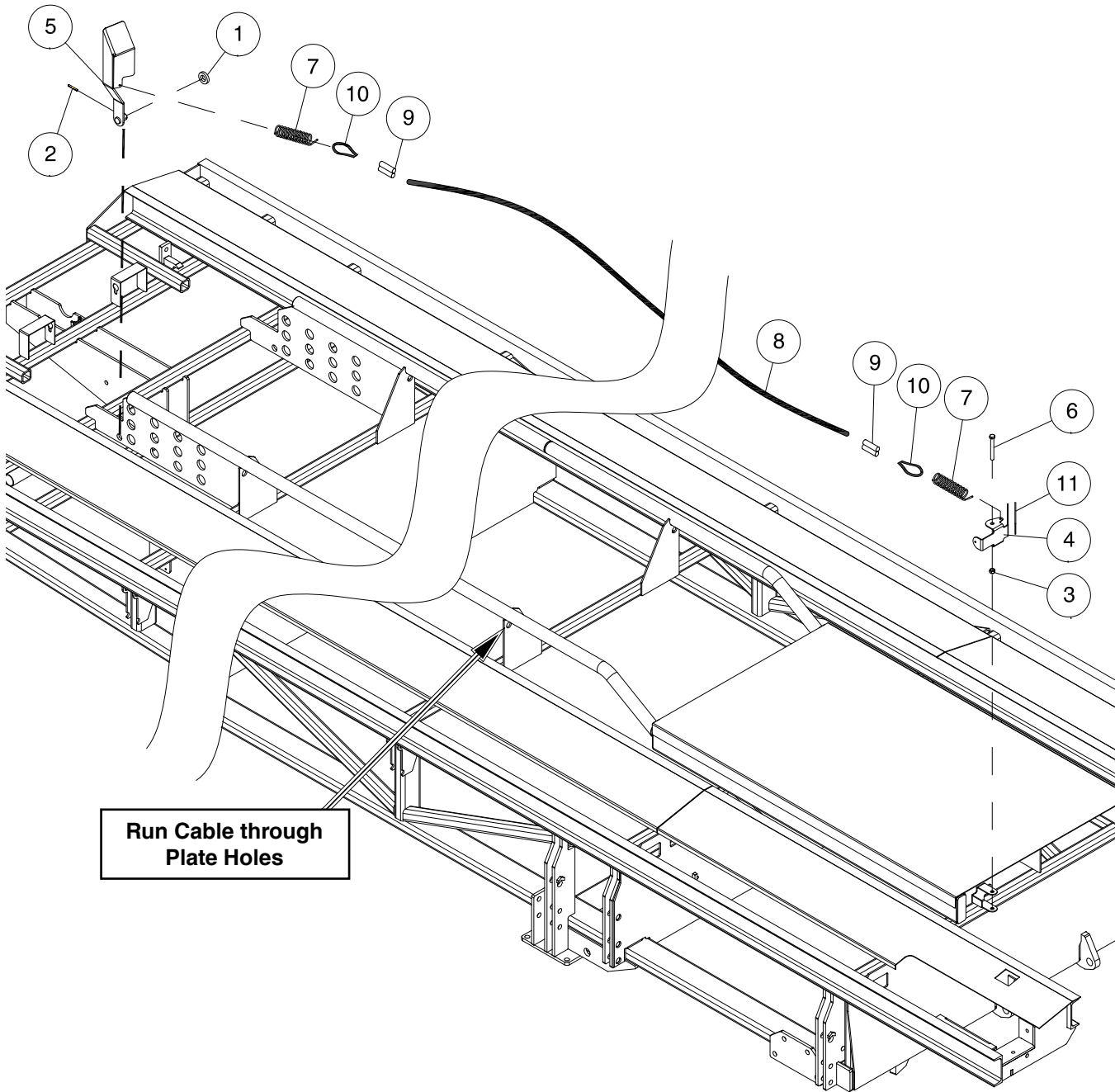
**Push Bar, Fork & Drive
Rear Motor - Drive - 2016**



Push Bar, Fork & Drive - Rear Motor Drive - 2016

Item	Part No.	Description	Qty
1	K51068	Drive Shaft - 1 3/4 Dia x 27 1/2 Lg	2
2	K24113	Pillow Block Bearing - 1 3/4 Dia w/Locking Collar.....	6
3	K59095	Tensioner - Motor Mount - Left.....	2
4	K59098	Tensioner - Motor Mount - Right.....	2
5	W-504	Hex Bolt - 5/8 x 4 Lg	4
6	S-1197	Locknut - 5/8 Unitorque	4
7	T-4832	Shim - 22 GA - Use as required to align shafts	12
8	K53608	Drive Sprocket - #60	2
9	K53609	Square Key - 3/8	6
10	K53611	Chain - Roller #60 x 59 Link.....	2
	W-807	Chain Link - #60 Connector	
11	K53446	Idler Sprocket - #80.....	2
12	K53641	Drive Sprocket - #80	2
13	K53642	Coupler Sprocket - #80	2
14	K53643	Connector Shaft	1
15	S-776	Hex Bolt - 1/2 x 1 1/2 Lg.....	4
16	W-500	Hex Bolt - 5/8 x 2 1/4 Lg.....	16
17	W-502	Hex Bolt - 5/8 x 2 3/4 Lg.....	4
18	W-517	Hex Nut - 5/8.....	20
19	W-526	Lockwasher - 5/8.....	20
20	W-793	Washer - 5/8 ID x 1 1/8 OD x 3/16 Thick	8
21	K56005	Chain - Roller #80 x 13 Link - W/Connector.....	2
	K56011	Connector - #80 Roller Chain.....	2
22	W-629	Flatwasher - 5/8. . . . (8 used on Motor Tensioners).....	20
23	*****	Orbit Motor Assembly - Left (See Orbit Motor Assembly page 2-10).....	1
24	*****	Orbit Motor Assembly - Right (See Orbit Motor Assembly page 2-10)	1

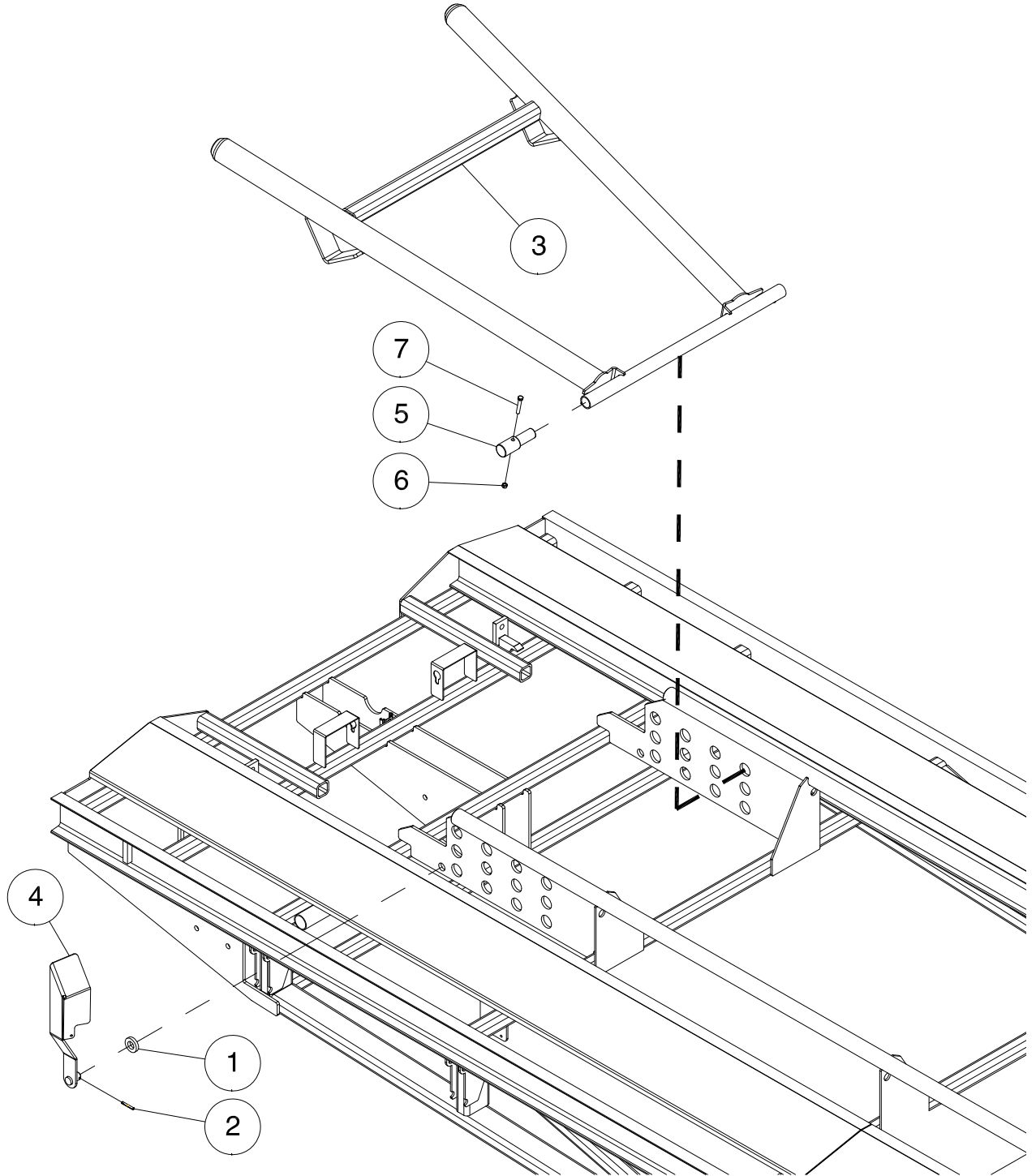
Push Bar, Fork & Drive Indicator and Activator Arm



Run Cable through Plate Holes

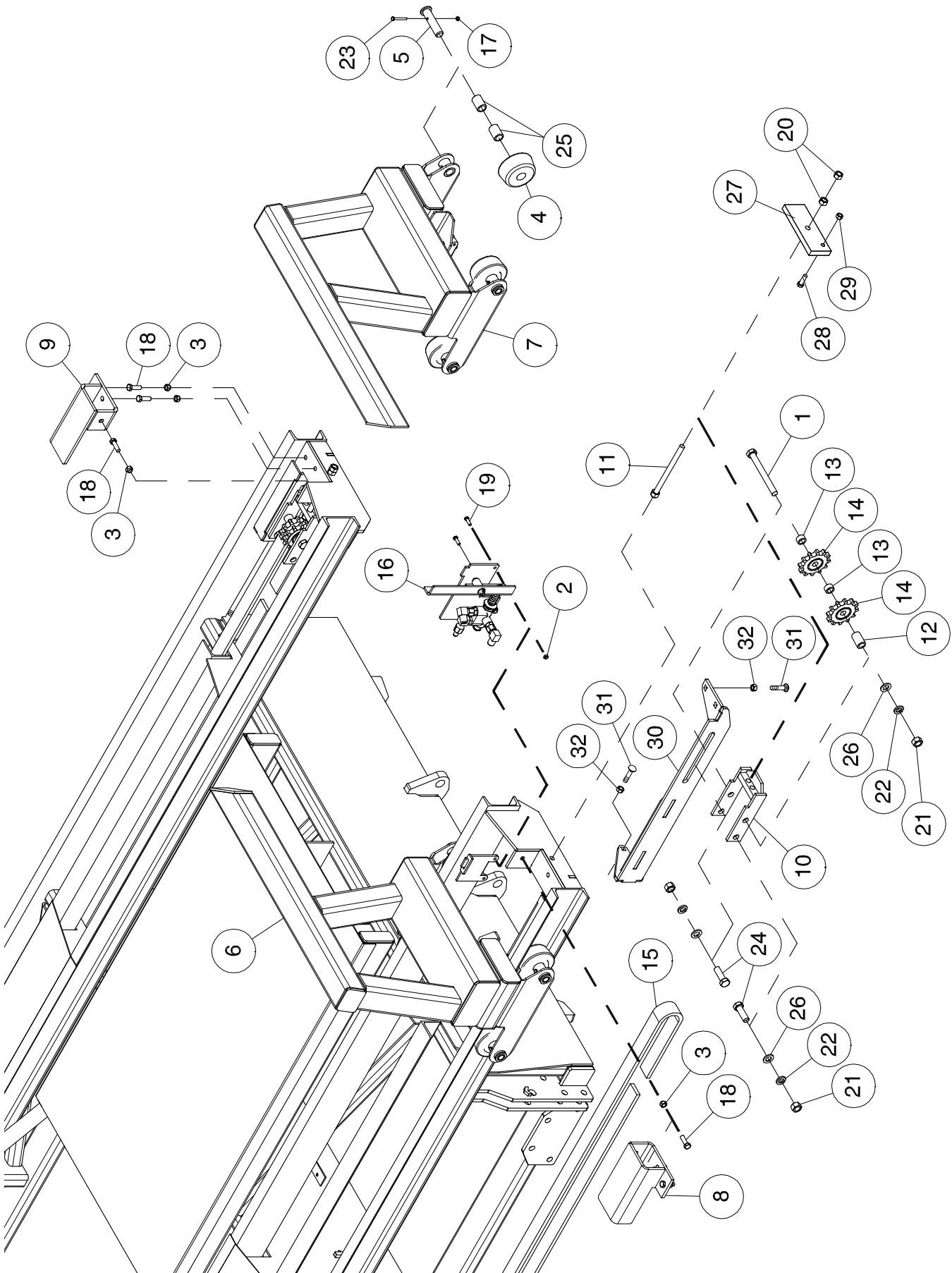
Item	Part No.	Description	Qty
1	ASP-114	Draw Pin Washer - 1.016 ID x 1 7/8 OD x 3/8 thick	1
2	D-5244	Spiral Pin - 1/4 Dia x 2 Lg	1
3	F-3405	Locknut - 1/2 Unitorque.....	1
4	K53434	Full Bale Indicator	1
5	K53620	Full Bale Activator Arm	1
6	W-495	Hex Bolt - 1/2 x 4 Lg.....	1
7	W-1663	Adjusting Spring.....	2
8	K24894	1/16 Aircraft Cable x 38' Lg	1
9	K42389	Oval Sleeve - 0.062" Dia.....	2
10	K42390	Thimble	2
11	N34477	Reflector - Yellow (Trim to Fit)	1

Push Bar, Fork & Drive Bale Divider



Item	Part No.	Description	Qty
1	ASP-114	Draw Pin Washer - 1.016 ID x 1 7/8 OD x 3/8 thick	1
2	D-5244	Spirol Pin - 1/4 Dia x 2 Lg	1
3	K56951	Bale Divider	1
4	K53620	Full Bale Activator Arm	1
5	K55831	Bale Divider Pin - 1 5/16 OD	1
6	M-3388	Locknut - 3/8 Unitorque.....	1
7	W-479	Hex Bolt - 3/8 x 2 1/4 Lg.....	1

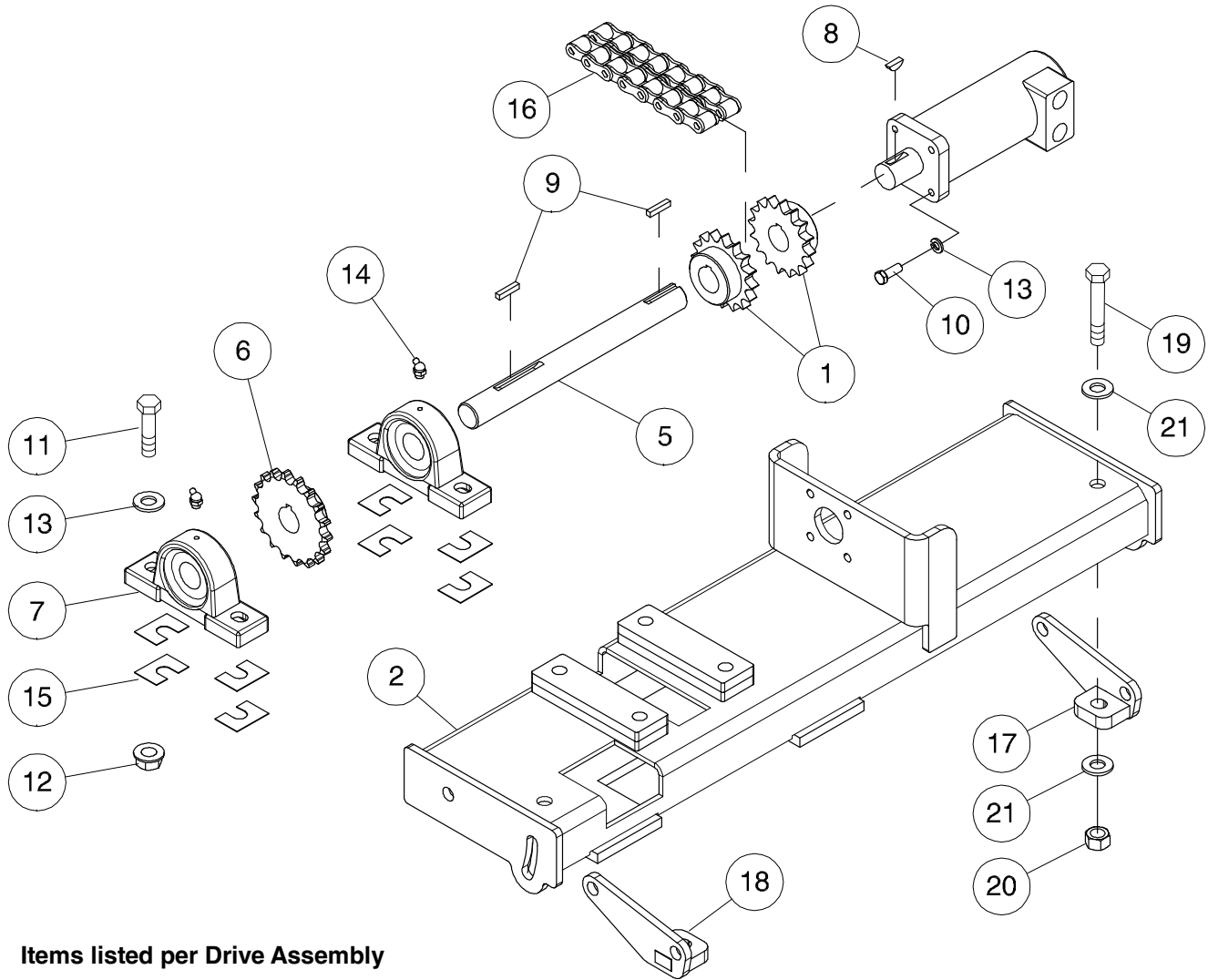
Push Bar, Fork & Drive Push Bars



Push Bar, Fork & Drive - Push Bars

Item	Part No.	Description	Qty
1	S32590	Hex Bolt - 3/4 x 7 Lg Grade 8.....	2
2	D-5272	Locknut - 5/16 Unitorque.....	2
3	F-3405	Locknut - 1/2 Unitorque.....	6
4	K49043	Roller - 5 Dia.....	8
	K56034	Roller Assembly - Includes 2 of S47527	
5	K49724	Pin 1 x 4-1/4 UL.....	8
6	K50419	Push Bar - Right.....	1
7	K50992	Push Bar - Left.....	1
8	K51064	Push Bar Stop - Right.....	1
9	K51067	Push Bar Stop - Left.....	1
10	K51075	Chain Tensioner.....	2
11	K53443	Front Tensioner Bolt.....	2
12	K53444	Tensioner Bushing - 1 1/8 OD x .765 ID x 1.875 Lg.....	2
13	K53445	Tensioner Bushing - 1 1/8 OD x .765 ID x 0.605 Lg.....	4
14	K53447	Idler Sprocket - 80C12.....	4
15	K53610	Double Chain - Roller #80 x 837 Links - W/Connector.....	2
	K56011	Connector Link - Double Chain 80 - Cotter Pin Type.....	1
16	K55371	Valve Assembly.....	1
17	N22778	Locknut - 1/4 Nylon Insert.....	8
18	S-776	Hex Bolt - 1/2 x 1 1/2 Lg.....	6
19	W-471	Hex Bolt - 5/16 x 1 Lg.....	2
20	W-517	Hex Nut - 5/8.....	4
21	W-518	Hex Nut - 3/4.....	4
22	W-527	Lockwasher - 3/4.....	4
23	W-1540	Hex Bolt - 1/4 x 2 Lg.....	8
24	W-1553	Hex Head Bolt - 3/4 x 2 1/4 Lg.....	2
25	S47527	Bushing - Fiber - 1 ID x 1 1/4 OD x 1 Lg.....	16
26	W-476	Flatwasher - 3/4.....	2
27	K56750	Plate.....	2
28	W-483	Hex Bolt - 7/16 x 1 1/4 Lg.....	2
29	S32944	Locknut - 7/16 Unitorque (W10545).....	2
30	K59994	Brace - Tensioner Right.....	1
	K59995	Brace - Tensioner Left (Shown).....	1
31	H-4584	Carriage Bolt - 1/2 x 1 1/2 Lg.....	10
32	W-525	Hex Nut - 1/2.....	10

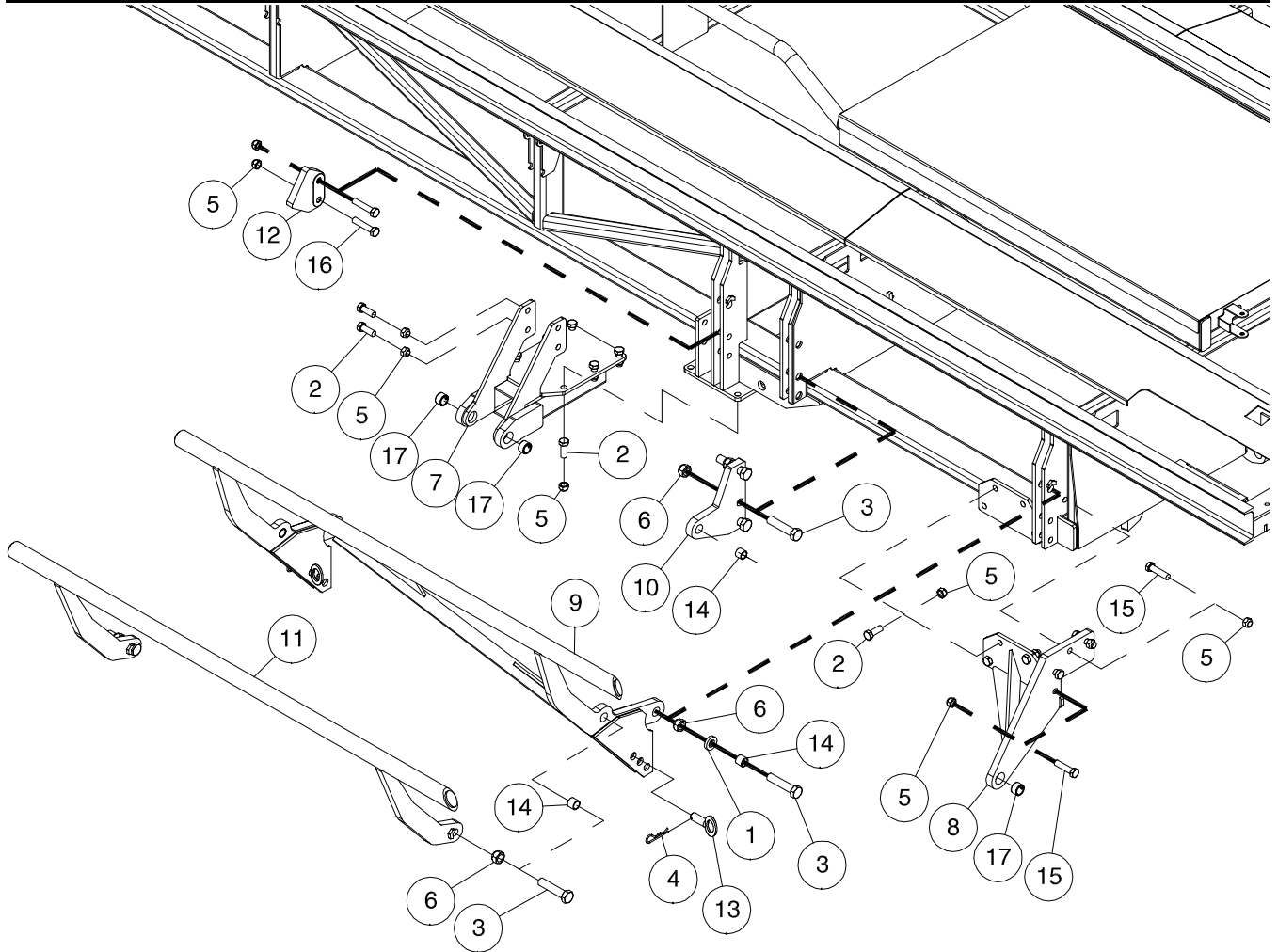
Push Bar, Fork & Drive Orbit Motor Assembly - 2016



Items listed per Drive Assembly

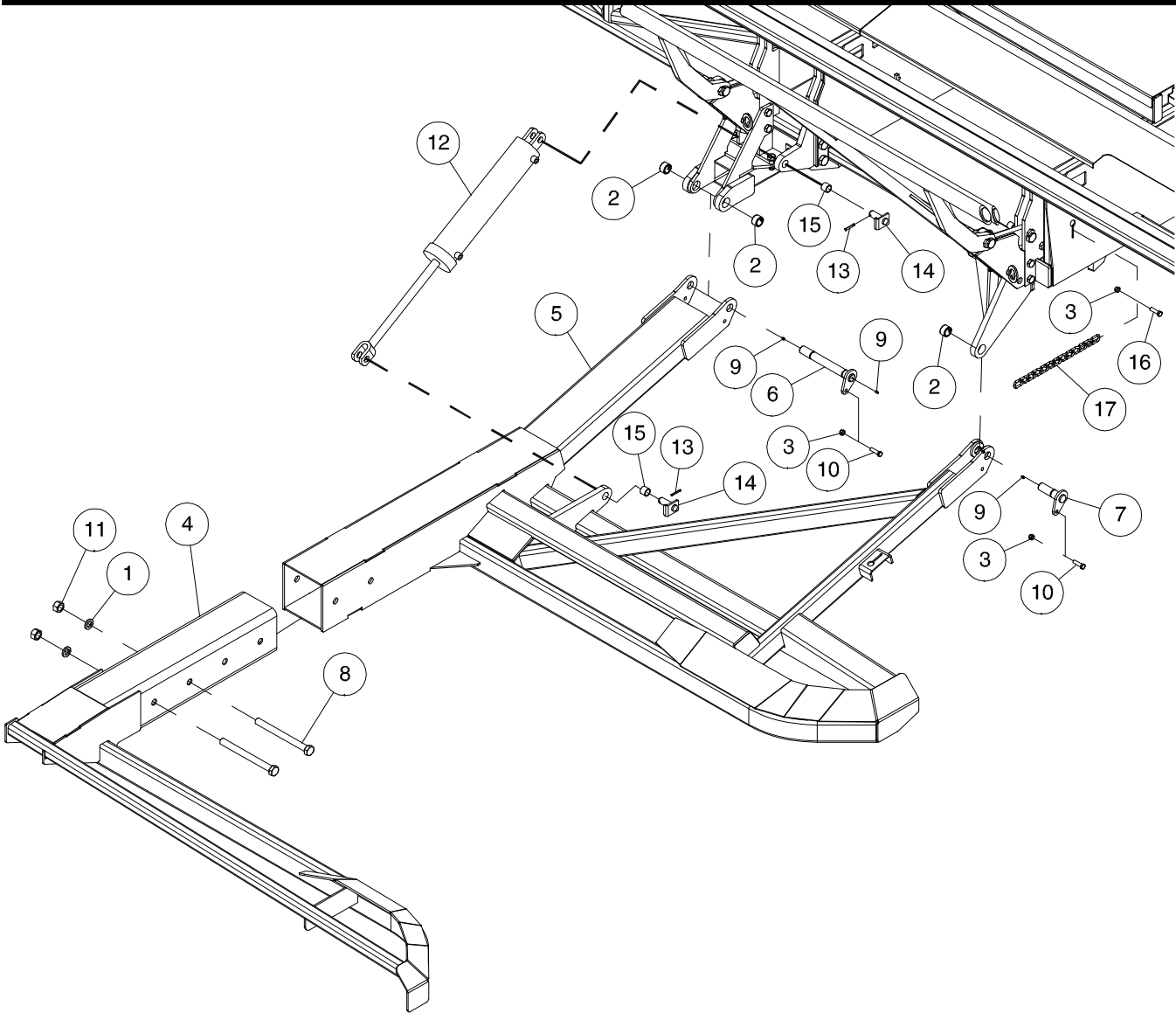
Item	Part No.	Description	Qty
1	K58125	Sprocket - H60B16 x 1-1/4 x 5/16 Keyway	2
2	K58128	Motor Mount - Right (Shown).....	1
	K58553	Motor Mount - Left.....	1
3	K58126	Hydraulic Motor - 1 1/4 Shaft.....	1
5	K58127	Jack Shaft - 1 1/4 Dia	1
6	K58130	Drive Sprocket - H60B18 x 1-1/4" - 5/16 KW.....	1
7	K24116	Pillow Block Bearing - 1 1/4 Dia Shaft.....	2
9	K58667	Keyway - 5/16 x 1 5/8 Lg.....	2
10	K58949	Hex Bolt - 3/8 x 1 Lg Gr 8.....	4
11	W-502	Hex Bolt - 5/8 x 2 3/4 Lg.....	4
12	W14434	Locknut - 5/8 Serrated Flange.....	4
13	S51182	Flatwasher - 0.656 ID x 1 OD x 10 GA.....	8
14	K58627	Grease Fitting - 45 Degree - M6-1 - Tapered (METRIC).....	2
15	T-4832	Shim - 22 Ga - Use as required	8
16	K58124	#60-2 (Double Strand) Roller Chain with Connector Link	1
17	K59095	Tensioner - Motor Mount - Left.....	1
18	K59098	Tensioner - Motor Mount - Right	1
19	W-504	Hex Bolt - 5/8 x 4 Lg.....	2
20	S-1197	Locknut - 5/8 Unitorque.....	2
21	W-629	Flat Washer - 21/32 ID x 1 5/16 OD x 13 Ga	4

Push Bar, Fork & Drive Bale Deflector Assembly



Item	Part No.	Description	Qty
1	ASP-114	Draw Pin Washer - 1.016 ID x 1 7/8 OD x 3/8 thick	4
2	C-695	Hex Bolt - 3/4 x 2 Lg.....	12
3	C12609	Hex Bolt - 1 x 4 1/2 Lg.....	7
4	D-5240	Hairpin - #10	2
5	D-5273	Locknut - 3/4 Unitorque.....	18
6	D-5274	Locknut - 1 Unitorque.....	7
7	K50400	Fork Mount - Rear	1
8	K50411	Fork Mount - Front.....	1
9	K50822	Side Rail.....	1
10	K50835	Cylinder Mount.....	1
11	K51079	Support Rail	1
12	K53423	Bale Deflector Stop	1
13	K53441	Adjustment Pin.....	2
14	S47527	Bushing - Fiber - 1 ID x 1 1/4 OD x 1 Lg.....	4
15	W-63	Hex Bolt - 3/4 x 3 Lg.....	4
16	W-510	Hex Bolt - 3/4 x 3 1/2 Lg.....	2
17	C42939	Bushing - Connex - 1 5/8 OD x 1 1/4 ID.....	3

Push Bar, Fork & Drive Fork Arm



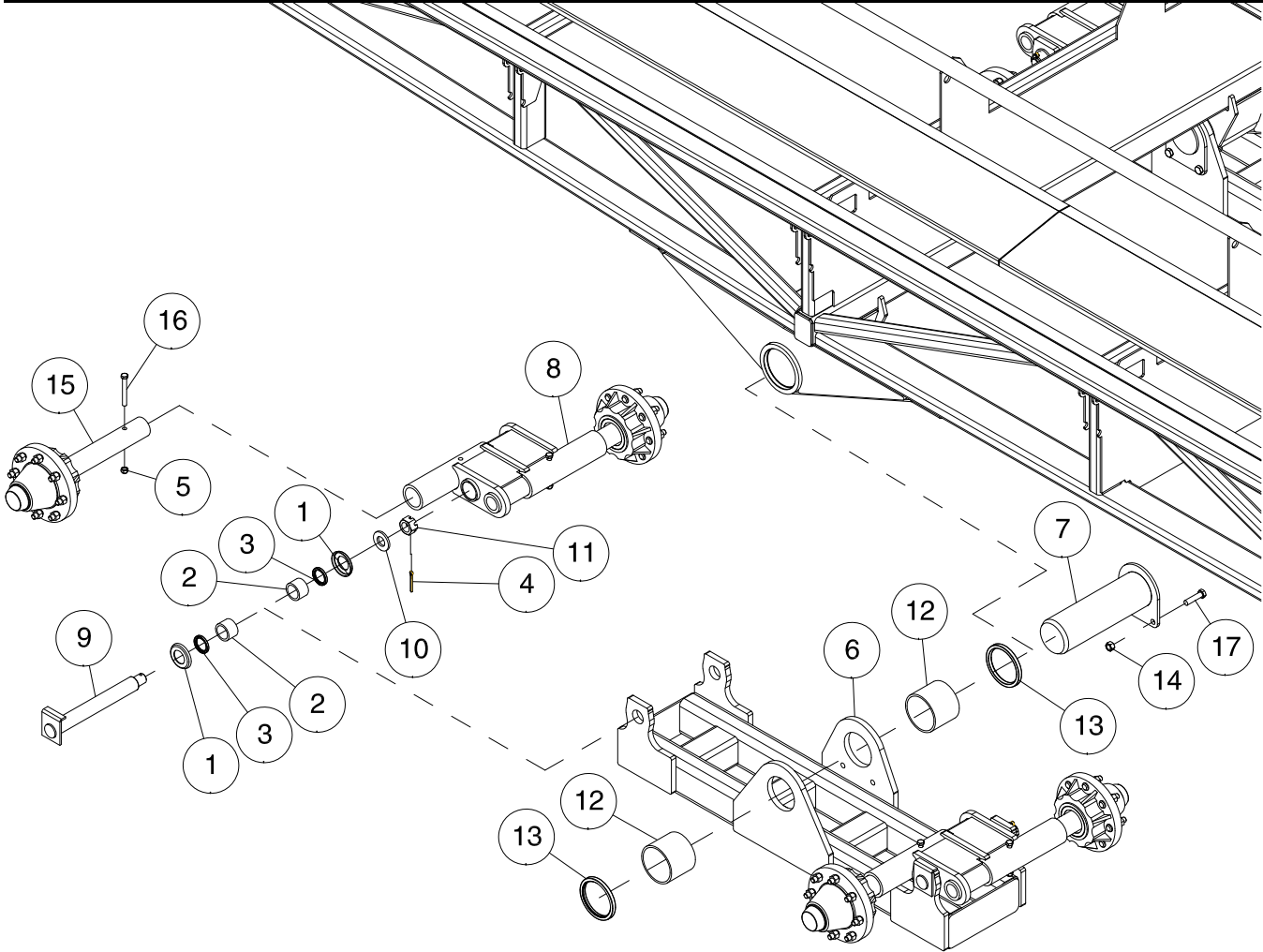
Item	Part No.	Description	Qty
1	C-705	Lockwasher - 1 Dia	2
2	C42939	Bushing - Connex - 1 5/8 OD x 1 1/4 ID.....	3
3	F-3405	Locknut - 1/2 Unitorque.....	3
4	K50120	Outer Bale Fork.....	1
5	K50125	Bale Fork.....	1
6	K51058	Pin - Greaseable - 1 1/4 Dia x 9 3/4 lg.....	1
7	K51060	Pin - Greaseable - 1 1/4 Dia x 3 1/2 lg.....	1
8	K53438	Hex Bolt - 1 x 11 Lg.....	2
9	S-752	Grease Fitting - 1/4	3
10	S-1189	Hex Bolt - 1/2 x 1 3/4 Lg.....	2
11	W-520	Hex Nut - 1	2
12	C26436	Cylinder - 4 x 18.....	1
13	D-5244	Spiral Pin - 1/4 x 2 Lg.....	2
14	K51066	Pin - 1 Dia x 2 1/4 UL - Chrome Plated	2
15	S47527	Bushing - Fibre - 1 ID x 1 1/4 OD x 1 Lg.....	2
16	S-776	Hex Bolt - 1/2 x 1 1/2 Lg.....	1
17	AFW-97	Chain - 23 Links.....	1

Section 3: Axle & Wheels

Section Contents

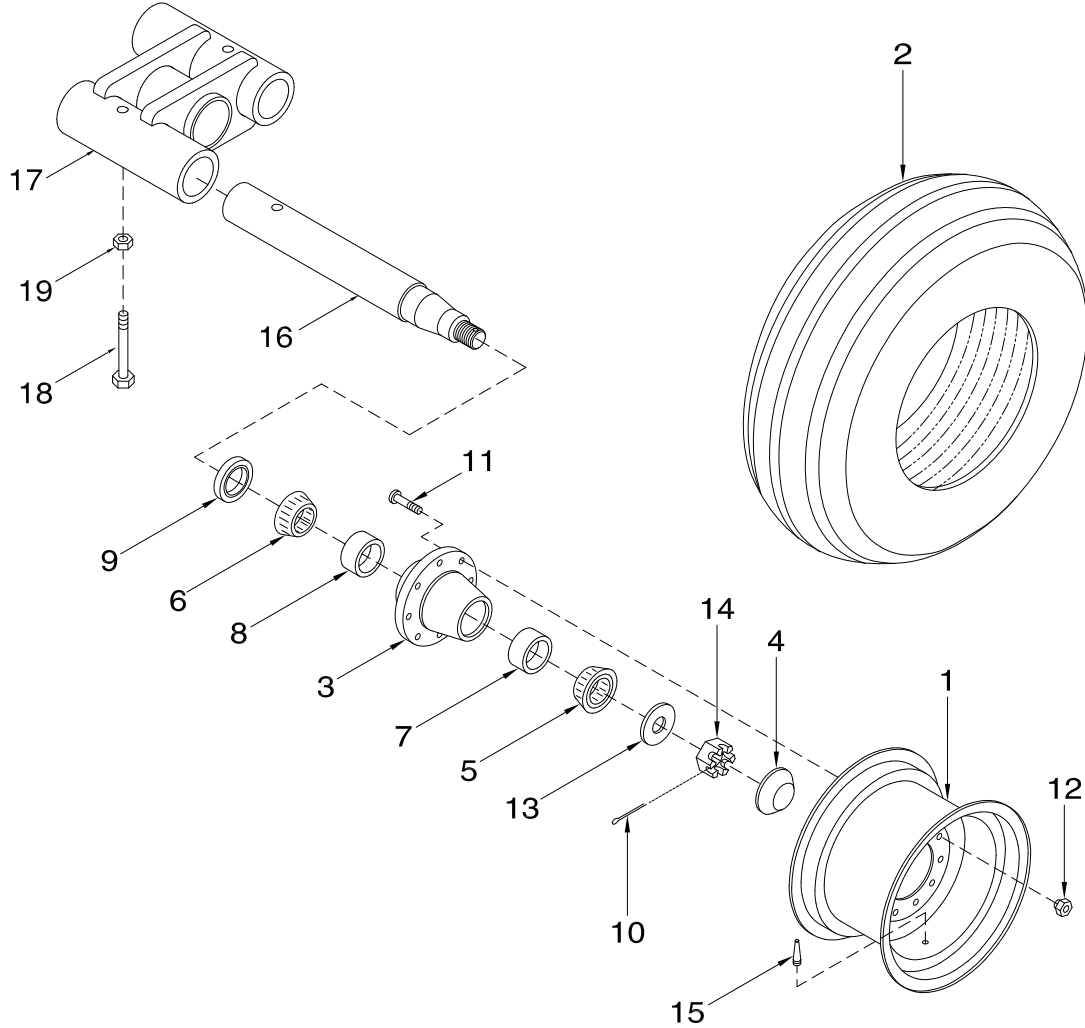
Axles	3-2
Axles and Tires.....	3-3

Axles & Wheels Axles



Item	Part No.	Description	Qty
1	C26082	Washer - 1 25/32 ID x 3 1/4 OD	8
2	C26086	Bushing - Fiber - 1.75 ID x 2.25 OD	8
3	C26266	Dust Seal - 1 3/4 Shaft (Seal Lip to Outside)	8
4	D-5239	Cotter Pin - 1/4 x 2 1/4 Lg	4
5	F-3405	Locknut - 1/2 Unitorque.....	8
6	K50965	Axle Pivot	2
7	K51055	Pivot Pin - 4 1/2 Dia x 14 3/8 Lg.....	2
8	K51562	Offset Axle Assembly (Includes Items # 1, 2 & 3)	4
9	K53437	Pivot Pin - 1 3/4 Dia x 13 5/8 Lg.....	4
10	N13962	Washer - 2-1/2 OD x 1-9/32 ID x 1/4	4
11	N19484	Hex Nut - 1-1/4 - Slotted	4
12	N36225	Bushing - 4.510 ID x 5.094 OD x 4 Lg	4
13	N36228	Dust Seal - 4.5 Dia Shaft x 5.256 OD (Seal Lip to Outside).....	4
14	N37509	Locknut - 5/8 Center Lock.....	4
15	S47513	2 1/2" Spindle & Hub Ass.....	8
16	W-495	Hex Bolt - 1/2 x 4 Lg.....	8
17	W-501	Hex Bolt - 5/8 x 2-1/2 Lg	4

Axles & Wheels Axles and Tires



Item	Part No.	Description	Qty
1	S47512	Rim - 16.1 x 14 - 8 Bolt	2
2	S47510	Tire - 16.5L x 16.1FI - Load Range E	2
3	N19173	Hub (Includes Items 7, 8 & 11).....	2
4	N19171	Dust Cap	2
5	N19170	Outer Wheel Bearing.....	2
6	N19169	Inner Wheel Bearing	2
7	N19168	Outer Bearing Cup	2
8	N19167	Inner Bearing Cup.....	2
9	N19172	Seal (Seal Lip to Inside).....	2
10	D-5239	Cotter Pin - 1/4 x 2 1/4	2
11	N19727	Wheel Stud - 5/8 x 18 UNF x 2 1/2	16
12	N19586	Tapered Wheel Nut - 5/8 - 18 UNF	16
13	N13962	Flatwasher - 1.281ID x 2 1/2 OD x 1/4 Thick.....	2
14	N19484	Castle Nut - 1 1/4	2
15	C17348	Valve Stem - TR-416.....	2
16	S47509	Spindle - 2 1/2 Dia	2
17	K51562	Offset Axle Assembly	4
18	W-495	Hex Bolt - 1/2 x 4 Lg.....	2
19	F-3405	Locknut - 1/2 Unitorque.....	2

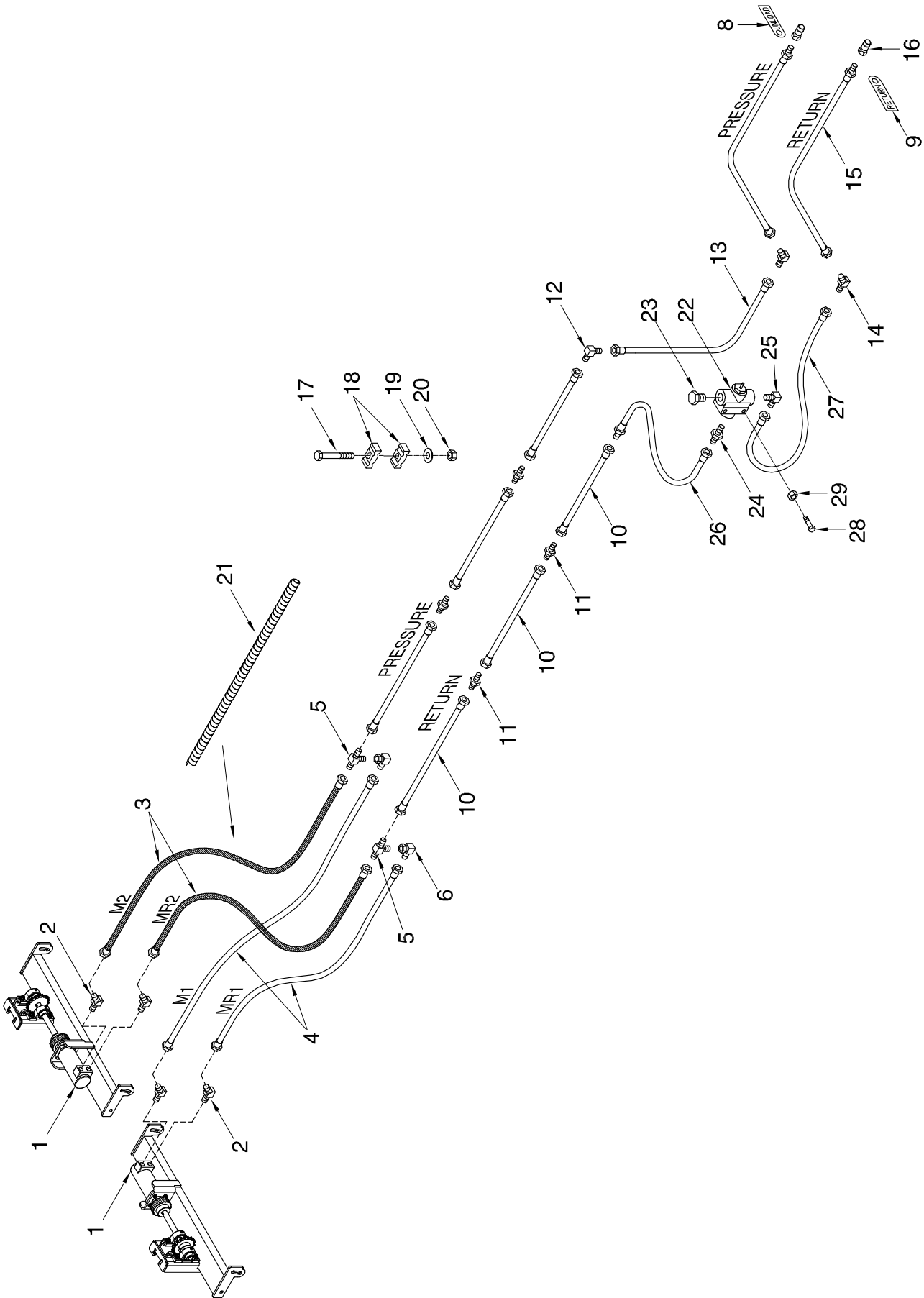
Notes

Section 4: Hydraulics

Section Contents

Push Bar with Line Lock Valve - Standard.....	4-2
Push Bar - Optional Split Drive.....	4-4
Fork	4-6
Cylinders	4-8
Selector Valve with Line Lock Valve.....	4-10

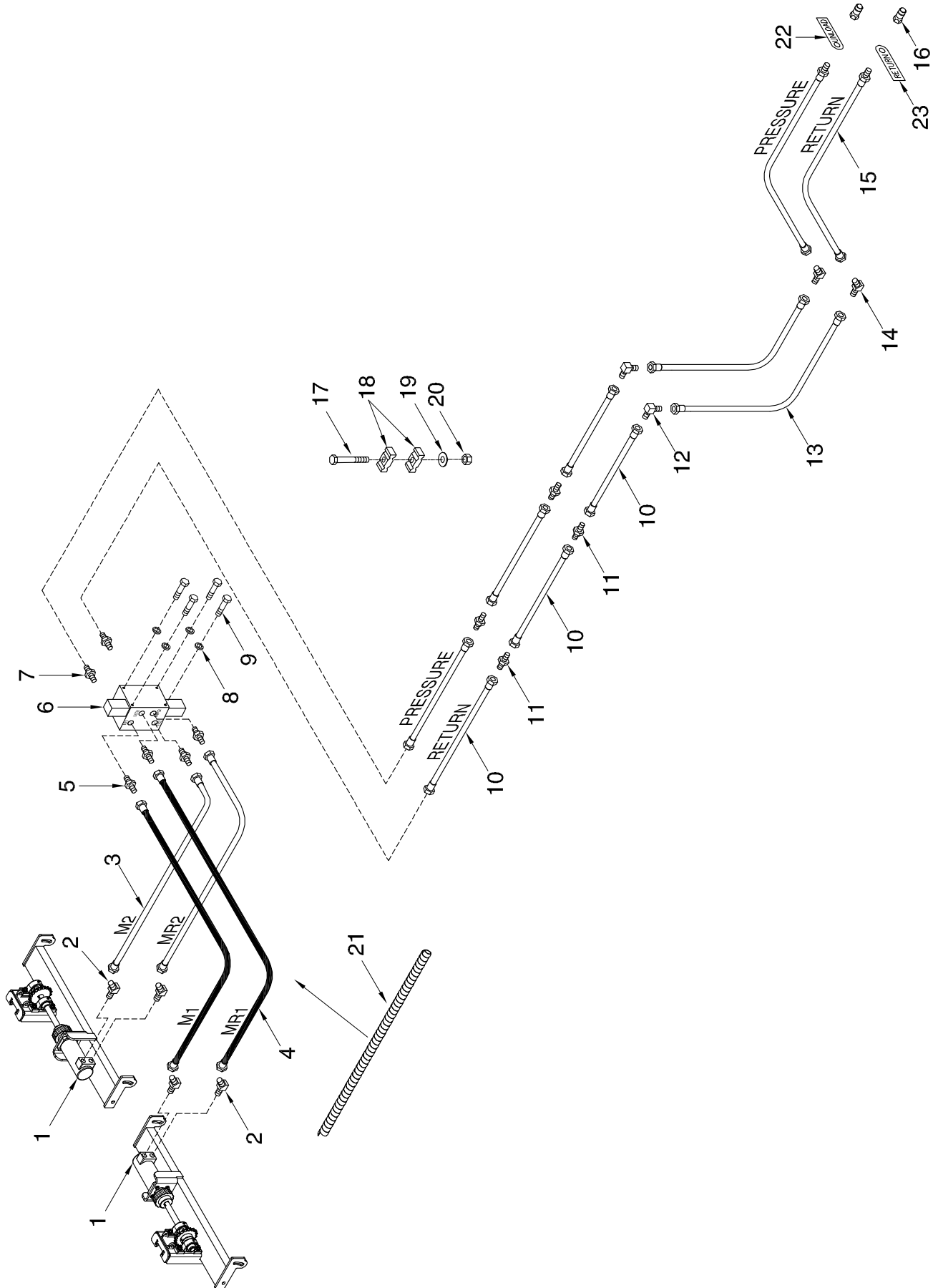
Hydraulics Push Bar with Line Lock Valve - Standard



Hydraulics - Push Bar with Line Lock Valve - Standard

Item	Part No.	Description	Qty
1	K58126	Hydraulic Motor - 1 1/4 shaft	2
	12286	Seal Kit - Shaft	
2	N49599	45 Elbow - 7/8-14 MJIC x 7/8-14 MORB	4
3	F-4565	Hyd Hose - 1/2 x 60 Lg w/7/8-14 FJIC.....	2
4	K-5685	Hyd Hose - 1/2 x 48 Lg w/7/8-14 FJIC.....	2
5	C-4394	Tee - (3) 7/8-14 MJIC	2
6	K-5806	90 Elbow - Swivel - 7/8-14 MJIC x 7/8-14 FJIC	2
7	D-4951	Nylon Tie Strap - 7 3/8 Lg.....	12
8	K29978	Tag - Hose ID - PUSH BAR - UNLOAD.....	1
9	K29979	Tag - Hose ID - PUSH BAR - RETURN.....	1
10	C-4369	Oil Line - 5/8 x 96 Lg w/ 7/8-14 FJIC	6
11	C-4469	Connector - 7/8-14 (#10) MJIC.....	4
12	H24393	90 Elbow - 7/8-14 MJIC.....	1
13	N19365	Hyd Hose - 1/2 x 140 Lg w/7/8-14 FJIC	1
14	K53616	45 Elbow - 7/8-14 (#10) MJIC	2
15	K53622	Hyd Hose - 1/2 x 78 Lg - w/7/8-14 FJIC x 3/4-16 MORB.....	2
16	N34443	Male Tip - 3/4-16 ORB.....	2
17	W-479	Hex Bolt - 3/8 x 2 1/4 Lg.....	7
18	C-4698	Oil Line Clamp	14
19	D-5489	Washer - 13/32.....	7
20	M-3388	Locknut - 3/8	7
21	N56957	Flexible Hose Cover - 48 Lg.....	2
22	C28501	Line Lock Valve	1
23	C28505	Plug - 3/4-16 MORB	1
24	C14840	Connector - 7/8-14 (#10) MJIC x 3/4-16 (#08) MORB.....	1
25	C24585	90 Elbow - 7/8-14 MJIC x 3/4 ORB.....	1
26	C-4389	Hyd Hose - 1/2 x 60 Lg w/7/8-14 MJIC x 7/8-14 FJIC	1
27	C26336	Hyd Hose - 1/2 x 198 Lg w/7/8-14 FJIC	1
28	J12217	Hex Bolt - 5/16 x 2 1/4	2
29	D-5278	Serrated Flange Locknut - 5/16	2
	K59981	Line Lock Valve Kit (Includes items 22 to 29)	

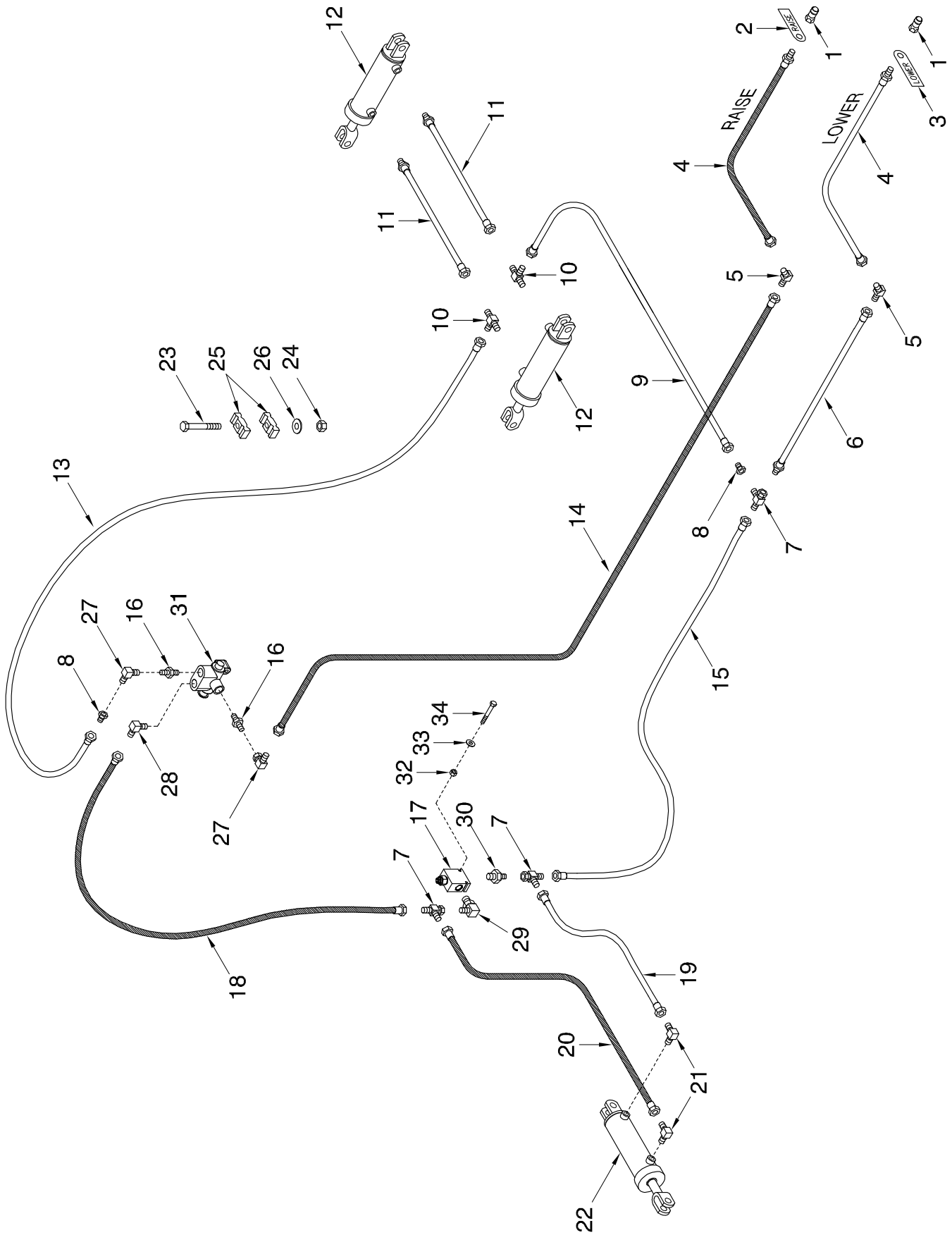
Hydraulics Push Bar - Optional Split Drive



Hydraulics - Push Bar - Optional Split Drive

Item	Part No.	Description	Qty
1	K58126	Hydraulic Motor - 1 1/4 shaft	2
	12286	Seal Kit	
2	N49599	45 Elbow - 7/8-14 MJIC x 7/8-14 MORB	4
3	F-4565	Hyd Hose - 1/2 x 60 Lg w/7/8-14 FJIC	2
4	K-5685	Hyd Hose - 1/2 x 48 Lg w/7/8-14 FJIC	2
5	C14840	Connector - 7/8-14 (#10) MJIC x 3/4-16 (#08) MORB	4
6	K53613	Flow Divider Block	1
7	N47903	Connector - 7/8-14 (#10) MJIC x 1 1/16-12 (#12) MORB	2
8	W-521	Lockwasher - 1/4	4
9	W-469	Hex Bolt - 1/4 x 3/4 LG	4
10	C-4369	Oil Line - 5/8 x 96 Lg w/ 7/8-14 FJIC	6
11	C-4469	Connector - 7/8-14 (#10) MJIC	4
12	H24393	90 Elbow - 7/8-14 MJIC	2
13	N19365	Hyd Hose - 1/2 x 140 Lg w/7/8-14 FJIC	2
14	K53616	45 Elbow - 7/8-14 (#10) MJIC	2
15	K53622	Hyd Hose - 1/2 x 78 Lg - w/7/8-14 FJIC x 3/4-16 MORB	2
16	N34443	Male Tip - 3/4-16 ORB	2
17	W-479	Hex Bolt - 3/8 x 2 1/4 Lg	6
18	C-4698	Oil Line Clamp	12
19	D-5489	Washer - 13/32	6
20	M-3388	Locknut - 3/8	6
21	N56957	Flexible Hose Cover - 48 Lg	2
22	K29978	Tag - Hose ID - PUSH BAR - UNLOAD	1
23	K29979	Tag - Hose ID - PUSH BAR - RETURN	1

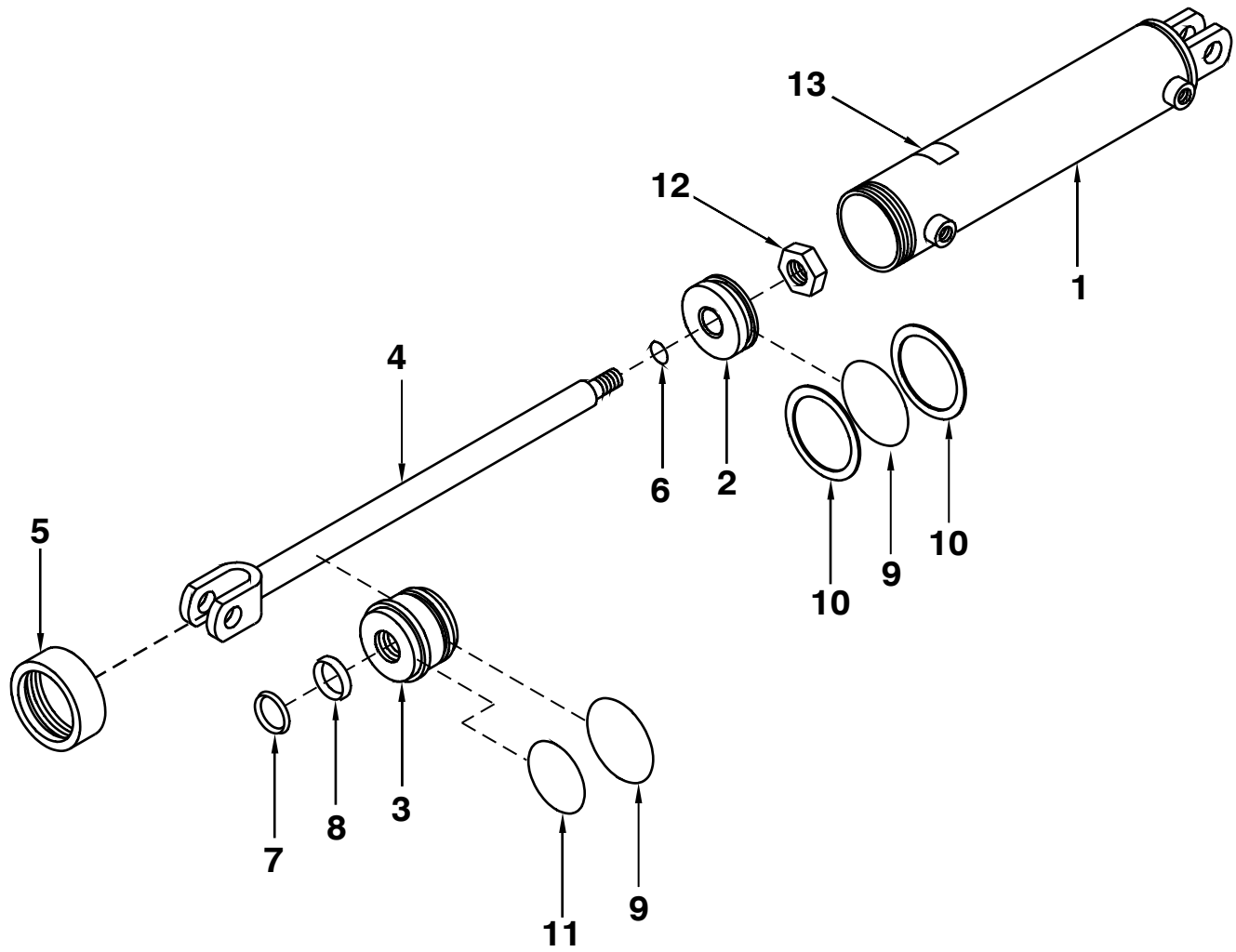
Hydraulics Fork



Hydraulics - Fork

Item	Part No.	Description	Qty
1	N34443	Male Tip - 3/4-16 ORB.....	2
2	K29976	Tag - Hose ID - Fork/Bed - Raise	1
3	K29977	Tag - Hose ID - Fork/Bed - Lower.....	1
4	K53622	Hyd Hose - 1/2 x 78 Lg - w/7/8-14 FJIC x 3/4-16 MORB.....	2
5	K53616	45 Elbow - 7/8-14 (#10) MJIC	2
6	C-4385	Hyd Hose - 1/2 x 24 Lg w/7/8-14 MJIC x 7/8-14 FJIC	1
7	H18746	Tee - Swivel - (2) 7/8-14 MJIC x (1) 7/8-14 FJIC (MMF)	3
8	F10384	Connector - 9/16-18 (#06) MJIC x 7/8-14 FJIC.....	1
9	C-4552	Hyd Hose - 1/4 x 24 Lg w/9/16-18 FJIC	1
10	K53617	Tee - (2) 9/16-18 MJIC X (1) 9/16-18 MORB	2
11	K53625	Hyd Hose - 1/4 x 10 1/4 Lg w/9/16- FJIC x 9/16-18 MORB	2
12	C26845	Cylinder - 4 1/2 x 18	2
13	D17845	Hyd Hose - 1/4 x 198 Lg w/9/16-18 Swivel FJIC.....	1
14	C26336	Hyd Hose - 1/2 x 198 Lg w/7/8-14 FJIC.....	1
15	K53630	Hyd Hose - 1/2 x 102 Lg w/7/8-14 FJIC.....	1
16	C14840	Connector - 3/4-16 MORB x 7/8-14 MJIC	2
17	K58600	Relief Valve.....	1
18	C18779	Hyd Hose - 1/2 x 72 Lg w/7/8-14 FJIC.....	1
19	S42969	Hyd Hose - 3/8 x 36 Lg w/ #6 9/16-18 FJIC.....	1
20	S47799	Hyd Hose - 3/8 x 60 Lg w/ #6 9/16-18 FJIC.....	1
21	N16143	90 Elbow - 9/16-18 (#06) MJIC x 9/16-18 (#06) MORB	1
22	C26436	Cylinder - 4 x 18 Lg	1
23	W-479	Hex Bolt - 3/8 x 2 1/4 Lg.....	3
24	M-3388	Locknut - 3/8 Unitorque.....	3
25	C-4698	Oil Line Clamp	4
26	D-5489	Washer - 13/32.....	6
27	K-5806	90 Elbow - Swivel - 7/8-14 MJIC x 7/8-14 FJIC	2
28	C24585	90 Elbow - 7/8-14 MJIC x 3/4-16 MORB.....	1
29	N34646	90 Elbow - 7/8-14 MJIC x 1 1/16-12 MORB	1
30	N47903	Connector - 7/8-14 (#10) MJIC x 1 1/16-12 (#12) MORB.....	1
31	K50180	2 Way Selector Valve.....	1
32	D-5278	Locknut - 5/16 Unitorque.....	2
33	D-5653	Washer - 11/32 ID x 3/4 OD	2
34	N28332	Hex Bolt - 5/16 x 3 1/2 Lg.....	2

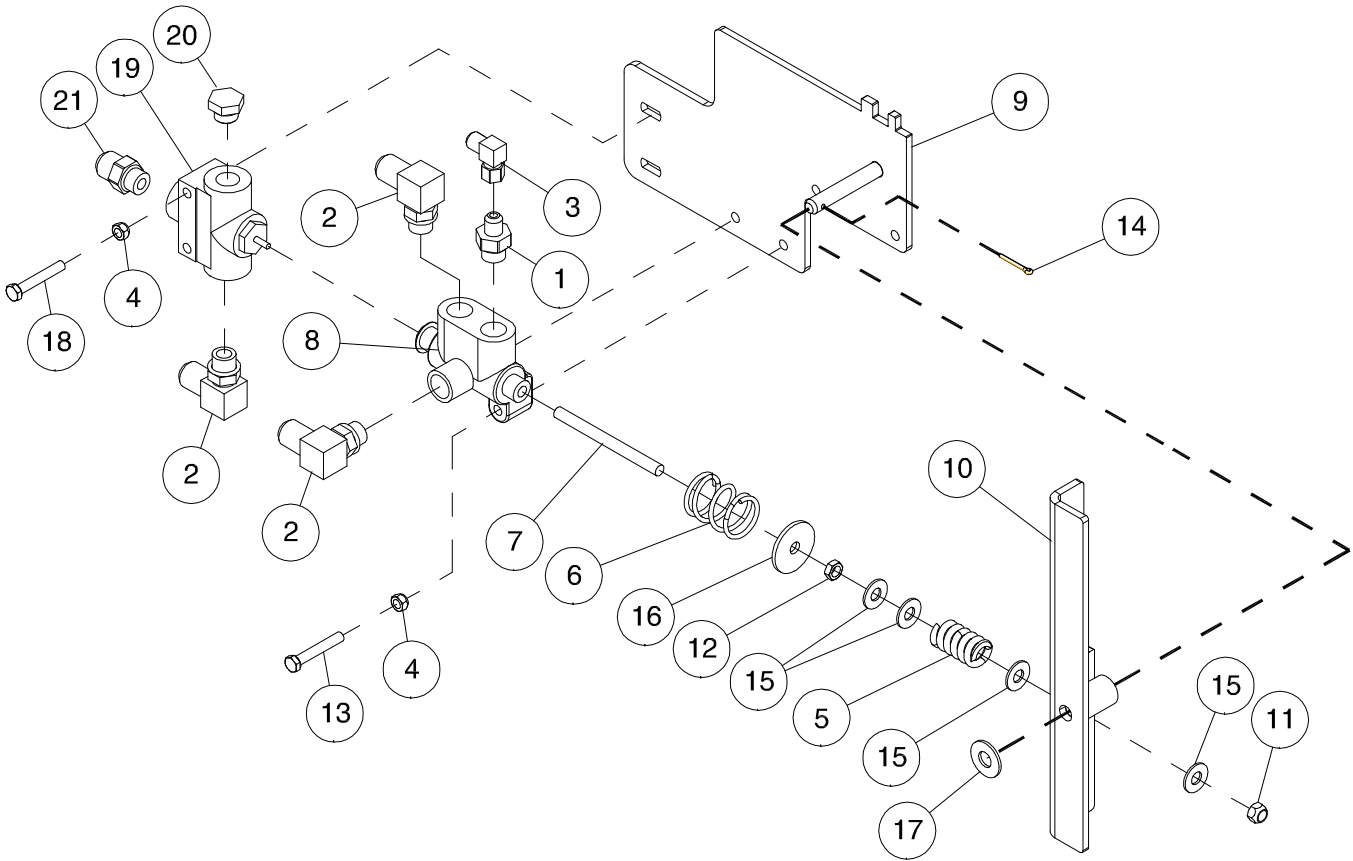
Hydraulics Cylinders



Hydraulics - Cylinders

Item	Part No.	Description	Qty
C26845 - 4 1/2 x 18 - CYLINDER			
1	C26848	Barrel - 4 1/2 x 18 ORB.....	1
2	C12836	Piston - 4 1/2 Dia - 1 Shaft.....	1
3	C26888	Gland - 4 1/2 Dia - 1 1/2 Shaft	1
4	C26890	Cylinder Shaft - 1 1/2 Dia x 25 7/8	1
5	C-2155	Collar - 4 1/2 Cylinder	1
6	C13282	1 1/8 OD x 1/16 C/S 90D BUNA O-Ring.....	1
7	C-2072	1 1/2 ID x 3/16 C/S 90D URTN Wiper	1
8	C-2071	1 1/2 ID x 3/8 C/S 90D URTN U-Cup.....	1
9	C-2164	4 1/2 OD x 3/16 C/S 90D BUNA O-Ring.....	2
10	C15387	Backup Washer - 4 1/2 Dia - #19-346	2
11	C-2215	3 7/8 OD x 1/16 C/S 70A BUNA-N O-Ring	1
12	C13763	Locknut - 1-14 UNS Unitorque	1
13	C26847	Part # Plate for C26845.....	1
	C26845	Cylinder Assembly (Includes All Above Items)	
	C26891	Seal Kit (Includes Items #6, 7, 8, 9, 10 & 11)	
C26436 - 4 x 18 - CYLINDER			
1	C26437	Barrel - 4 x 18 ORB.....	1
2	C16637	Piston - 4 Dia - 7/8 Shaft.....	1
3	C-2026	Gland - 4 Dia - 1 1/4 Shaft	1
4	C32025	Cylinder Shaft - 1 1/4 Dia x 25 7/8	1
5	C-2023	Collar - 4 Cylinder	1
6	C-2187	1 OD x 1/16 C/S 90D BUNA O-Ring.....	1
7	C-2007	1 1/4 ID x 3/16 C/S 90D URTN Wiper	1
8	C-2008	1 1/4 ID x 5/16 C/S 90D URTN U-Cup.....	1
9	C-2030	4 OD x 3/16 C/S 90D BUNA O-Ring.....	2
10	C15386	Backup Washer - 4 Dia - #342	2
11	C-2215	3 7/8 OD x 1/16 C/S 70A BUNA-N O-Ring	1
12	C-2017	Locknut - 7/8 UNF Unitorque	1
13	C26846	Part # Plate for C26436.....	1
	C26436	Cylinder Assembly (Includes All Above Items)	
	C20449	Seal Kit (Includes Items #6, 7, 8, 9, 10 & 11)	

Push Bar, Fork & Drive Selector Valve with Line Lock Valve



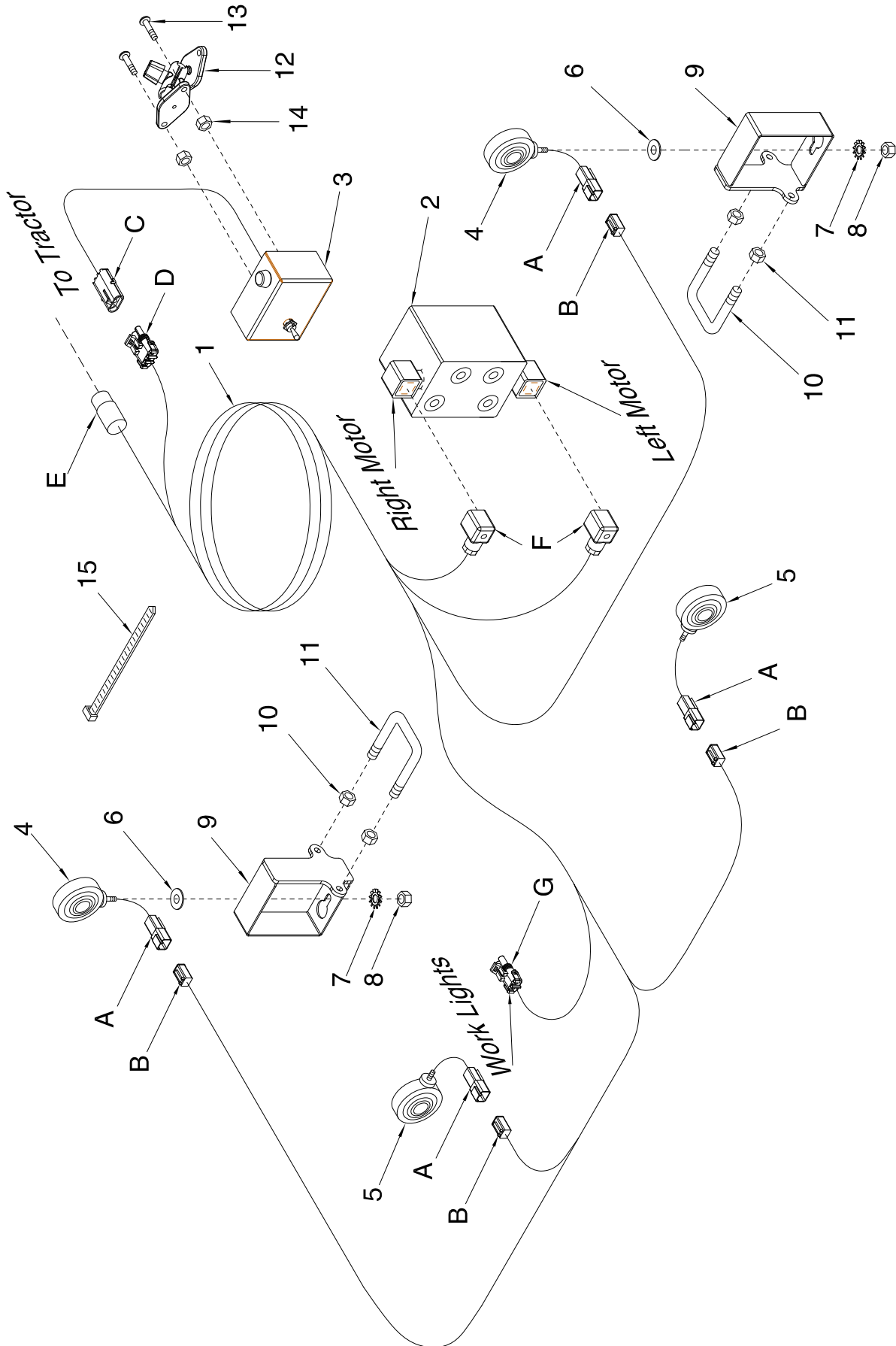
Item	Part No.	Description	Qty
1	C15348	Connector - 9/16-18 (#06) MJIC x 3/4-16 (#08) MORB.....	
2	C24585	90 Elbow - 7/8-14 MJIC x 3/4-16 MORB.....	3
3	S29967	90 Elbow - Swivel - 9/16-18 (#06) FJIC x 9/16-18 (#06) MJIC.....	1
4	D-5272	Locknut - 5/16 Unitorque.....	4
5	W-342	Spring - Compression - 9/16 ID x 1 OD x 1 13/16 Lg.....	1
6	K25655	Spring - 1.345 ID x 1.615 OD x 2.012 Lg.....	1
7	K25657	Threaded Rod - 3/8 x 4 1/2 Lg.....	1
8	K50180	2 Way Selector Valve.....	1
9	K59982	Valve Mount Plate.....	1
10	K55373	Valve Actuator.....	1
11	M-3388	Locknut - 3/8 Unitorque.....	1
12	W-514	Hex Nut - 3/8.....	1
13	S-1303	Hex Bolt - 5/16 x 2 Lg.....	2
14	W-528	Cotter Pin - 1/8 Dia x 1 Lg.....	1
15	W-538	Washer - 7/16 ID x 1 OD x 14 Ga.....	4
16	W14504	Washer - 13/32 ID x 1 3/4 OD x 10 Ga.....	1
17	S-766	Flatwasher - 1/2 ID x 1 1/4 OD x 13 Ga.....	1
18	J12217	Hex Bolt - 5/16 x 2 1/4 Lg.....	2
19	C28501	Line Lock Valve.....	1
20	C28505	Plug - 3/4 MORB.....	1
21	C14840	Connector - 7/8-14 MJIC x 3/4-16 MORB.....	1

Section 5: Lighting and Safety Signs

Section Contents

Marking Lights.....	5-2
Safety Signs.....	5-4

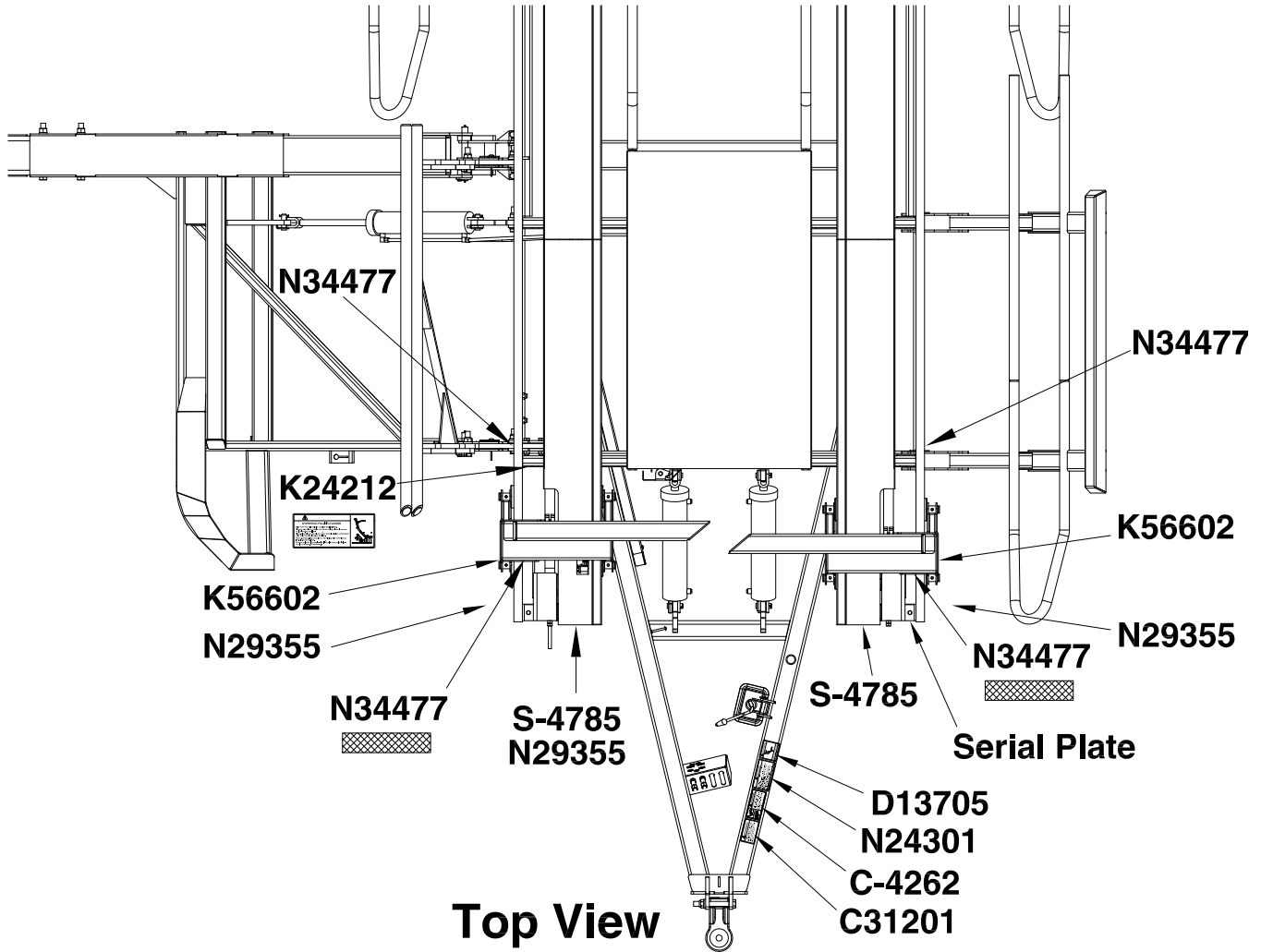
Lighting Marking Lights



Lighting - Marking Lights

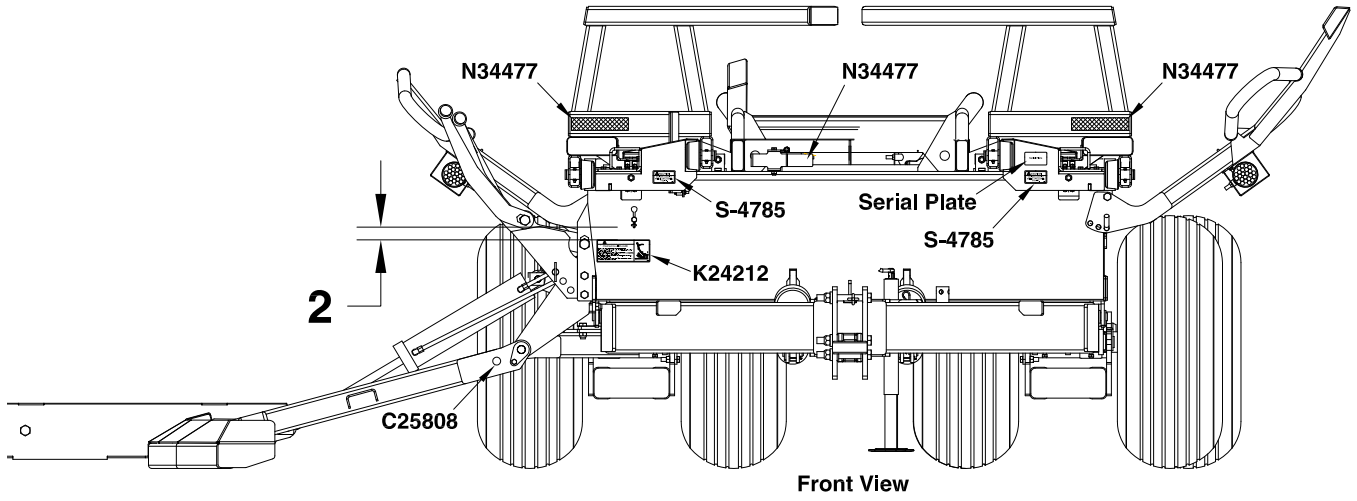
Item	Part No.	Description	Qty
1	K53614	Main Wiring Harness.....	1
2	K53613	Flow Divider Block - Optional Single Bale Row Kit	1
3	K53615	Control Box Assembly - Optional Single Bale Row Kit	1
	K53640	Control Box	1
	K47314	Fast Acting Fuse	1
	K47315	Fuse Holder.....	1
	K47319	Machine Screw - #12 x 1/2.....	2
	K56000	Toggle Switch	1
	K56001	Cab Harness	1
4	N50365	Light LED - Amber.....	2
5	N50366	Light LED - Red	2
6	W-539	Flatwasher - 1/2	4
7	D-5280	Starwasher - 1/2.....	4
8	W-516	Hex Nut - 1/2.....	4
9	K53432	Light Mount	2
10	M-3388	Locknut - 3/8	4
11	N36148	U-Bolt - 3/8 x 3 x 4 UL.....	2
12	N44254	Monitor Mount - Optional Single Bale Row Kit.....	1
13	N34961	Machine Screw - #10 x 3/4 - Optional Single Bale Row Kit.....	2
14	N37787	Locknut - #10 Nylon - Optional Single Bale Row Kit.....	2
15	D-4951	Nylon Tie Strap - 7 3/8 Lg.....	AsReq
15A	D-4838	Nylon Tie Strap - 14 1/2 Lg.....	AsReq
A	C32681	Deutsch DT 2 way Plug with Wedge - Female Pin 16-20G	
B	C32682	Deutsch DT 2 Way Plug with Wedge - Male Pin 16-20G	
C	N27613	Weather Pak Connector - BLACK - 3 Pin Plug (Male)	
D	N27614	Weather Pak Connector - BLACK - 3 Pin Socket (Female)	
E	C32690	Cole Hersee - 7 Pole Plug	
F	N29329	DIN Connector - Plug w/Gasket	
G	N29385	Weather Pak Connector - BLACK - 2 Pin Socket (Female)	

Top View

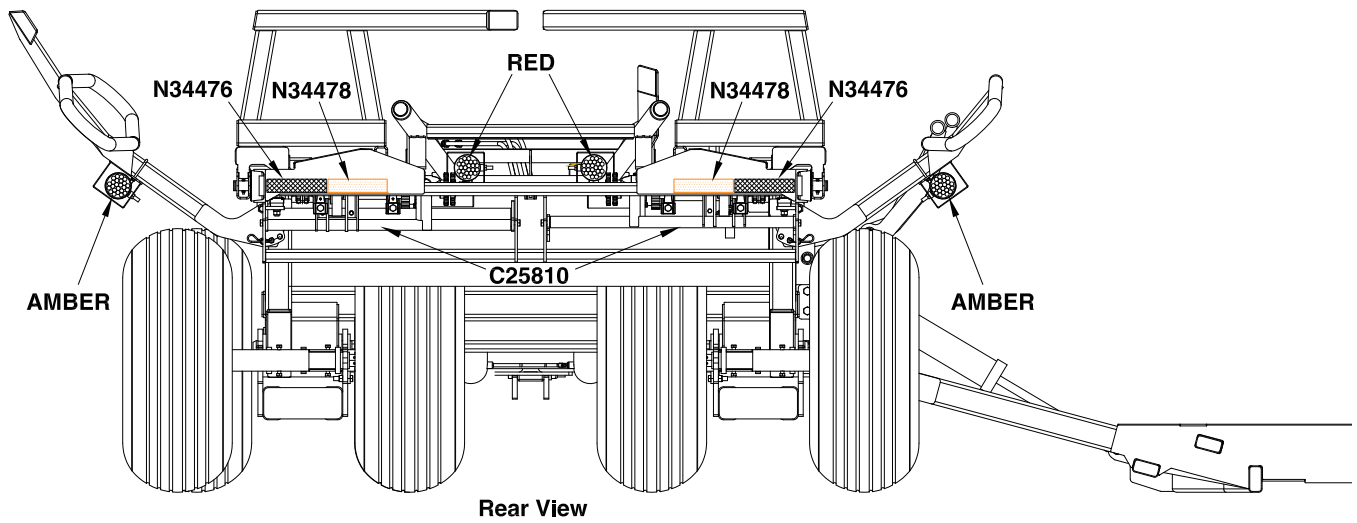


Safety Signs

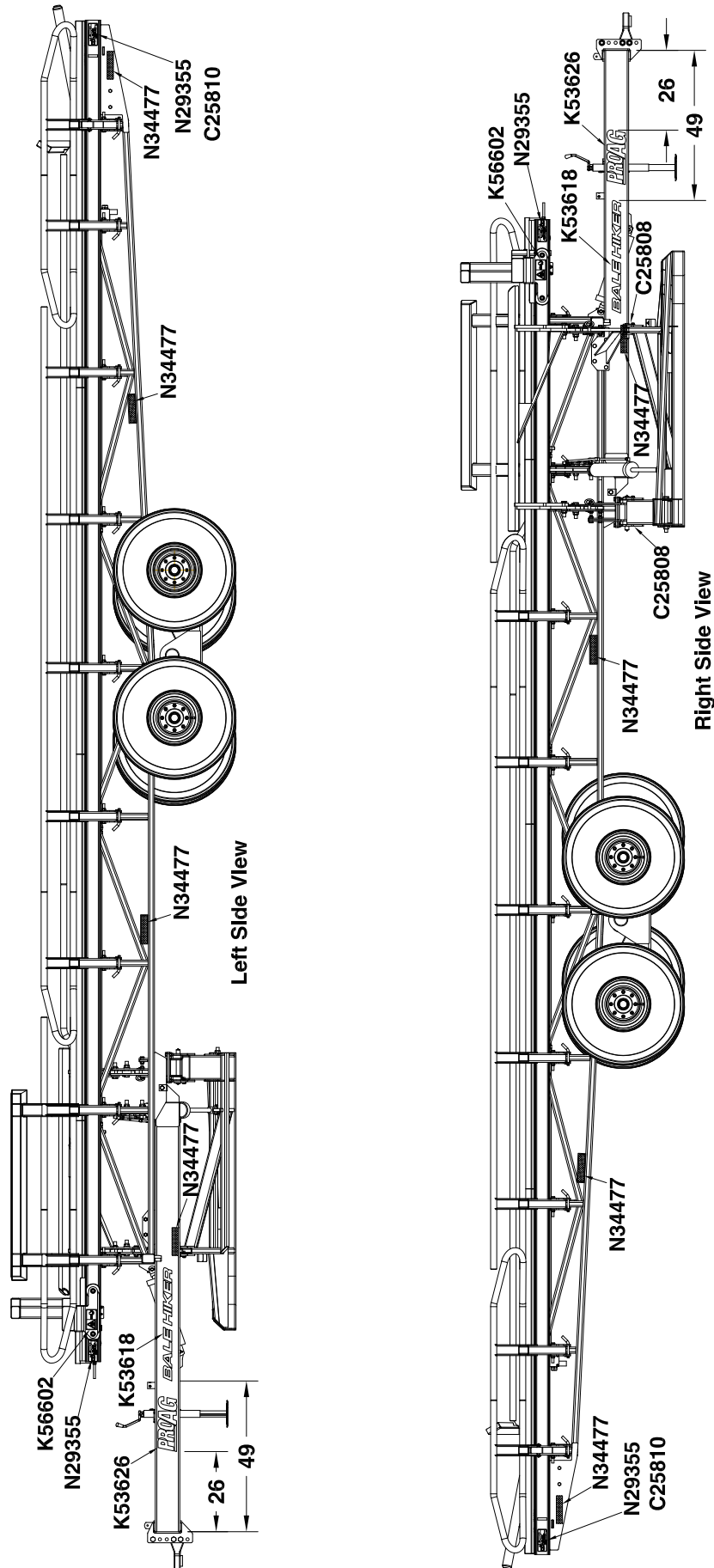
Front View



Rear View



Side View



Index

10072 1-3	C26888 4-9	K25657 4-10	K53615 5-3
12286 4-3,4-5	C26890 4-9	K29976 4-7	K53616 4-3,4-5,4-7
A	C26891 4-9	K29977 4-7	K53617 4-7
AFW-97 2-12	C28501 4-3,4-10	K29978 4-3,4-5	K53620 2-6,2-7
ASP-114 1-5,2-6,2-7,2-11	C28505 4-3,4-10	K29979 4-3,4-5	K53622 4-3,4-5,4-7
C	C32025 4-9	K42389 2-6	K53624 1-5
C-333 1-5	C32681 5-3	K42390 2-6	K53625 4-7
C-695 2-11	C32682 5-3	K47314 5-3	K53630 4-7
C-705 2-12	C32690 5-3	K47315 5-3	K53640 5-3
C-1471 1-3	C42939 1-5,2-11,2-12	K47319 5-3	K53641 2-3,2-5
C-2007 4-9	D	K49043 2-9	K53642 2-3,2-5
C-2008 4-9	D-4838 5-3	K49703 1-3	K53643 2-3,2-5
C-2017 4-9	D-4951 4-3,5-3	K49721 1-5	K53994 1-3
C-2023 4-9	D-5239 3-2,3-3	K49724 2-9	K55371 2-9
C-2026 4-9	D-5240 1-3,2-11	K50120 2-12	K55373 4-10
C-2026 4-9	D-5244 1-5,2-6,2-7,2-12	K50125 2-12	K55831 2-7
C-2030 4-9	D-5272 1-6,2-9,4-10	K50180 4-7,4-10	K56000 5-3
C-2071 4-9	D-5273 2-11	K50380 1-3	K56001 5-3
C-2072 4-9	D-5274 2-11	K50400 2-11	K56005 2-3,2-5
C-2155 4-9	D05274 1-5	K50411 2-11	K56011 2-3,2-5,2-9
C-2164 4-9	D-5277 1-5	K50419 2-9	K56034 2-9
C-2187 4-9	D-5278 4-3,4-7	K50436 1-5	K56750 2-9
C-2215 4-9	D-5280 5-3	K50822 2-11	K56951 2-7
C-4369 4-3,4-5	D-5489 4-3,4-5,4-7	K50823 1-3	K58124 2-10
C-4385 4-7	D-5558 1-3	K50835 2-11	K58125 2-10
C-4389 4-3	D-5653 4-7	K50965 3-2	K58126 2-10,4-3,4-5
C-4394 4-3	D17845 4-7	K50992 2-9	K58127 2-10
C-4469 4-3,4-5	F	K51055 3-2	K58128 2-10
C-4552 4-7	F-3405	K51058 2-12	K58130 2-10
C-4698 4-3,4-5,4-7	2-3,2-6,2-9,2-12,3-2,3-3	K51060 2-12	K58132 1-3
C12609 2-11	F-4565 4-3,4-5	K51064 2-9	K58135 1-3
C12836 4-9	F10384 4-7	K51066 1-5,2-12	K58138 1-3
C13282 4-9	H	K51067 2-9	K58173 1-5
C13763 4-9	H-4584 2-9	K51068 2-3,2-5	K58174 1-5
C14840 4-3,4-5,4-10,	H10462 1-5,1-6	K51075 2-9	K58175 1-5
C15348 4-10	H18746 4-7	K51079 2-11	K58351 1-3
C15386 4-9	H24393 4-3,4-5	K51092 1-5	K58353 1-3
C15387 4-9	H27963 1-5,1-6	K51562 3-2,3-3	K58417 1-5
C16637 4-9	H29011 1-3,1-6	K53423 2-11	K58553 2-10
C17348 3-3	J	K53432 5-3	K58600 4-7
C18761 1-5	J12217 4-3,4-10	K53434 2-6	K58627 2-10
C18779 4-7	K	K53437 3-2	K58667 2-10
C20449 4-9	K-3830 1-3	K53438 2-12	K58949 2-10
C24585 4-3,4-7,4-10	K-5685 4-3,4-5	K53441 2-11	K59095 2-5,2-10
C26082 3-2	K-5806 4-3,4-7	K53443 2-3,2-9	K59098 2-5,2-10
C26086 3-2	K24113 2-3,2-5	K53444 2-9	K59981 4-3
C26266 3-2	K24116 2-10	K53445 2-9	K59982 4-10
C26336 4-3,4-7	K24894 2-6	K53446 2-3,2-5	K59994 2-9
C26436 2-12,4-7,4-9	K25655 4-10	K53447 2-9	K59995 2-9
C26437 4-9		K53608 2-3,2-5	M
C26845 1-5,4-7,4-9		K53609 2-3,2-5	M-3388 1-5,2-7,4-3,4-5,4-7,4-10,5-3
C26846 4-9		K53610 2-9	N
C26847 4-9		K53611 2-3,2-5	
C26848 4-9		K53612 2-3	
		K53613 4-5,5-3	
		K53614 5-3	

N13962 3-2, 3-3
N16143 4-7
N19167 3-3
N19168 3-3
N19169 3-3
N19170 3-3
N19171 3-3
N19172 3-3
N19173 3-3
N19365 4-3, 4-5
N19484 3-2, 3-3
N19586 3-3
N19727 3-3
N19966 1-6
N19967 1-6
N19968 1-6
N19969 1-6
N22778 1-3, 2-9
N27613 5-3
N27614 5-3
N28332 4-7
N29329 5-3
N29385 5-3
N34443 4-3, 4-5, 4-7
N34475 1-3
N34476 1-3
N34477 1-3, 2-6
N34478 1-3
N34643 1-3
N34646 4-7
N34961 5-3
N36148 5-3
N36225 3-2
N36228 3-2
N37509 3-2
N37787 5-3
N44254 5-3
N47903 , 4-5
N49599 4-3, 4-5
N50365 5-3
N50366 5-3
N56957 4-3, 4-5

S

S-752 2-12
S-766 4-10
S-776 2-3, 2-5, 2-9, 2-12
S-1189 2-12
S-1197 2-5, 2-10
S-1303 4-10
S27987 1-5
S29967 4-10
S32590 2-9
S32944 2-9
S39487 1-5
S42949 1-3
S42969 4-7
S47509 3-3

S47510 3-3
S47512 3-3
S47513 3-2
S47527 1-5, 2-9, 2-11, 2-12
S47597 1-5
S47799 4-7
S51182 2-10

T

T-4832 2-3, 2-5, 2-10

W

W-7 1-5
W-63 2-11
W-131 1-5, 1-6
W-342 4-10
W-469 4-5
W-471 2-9
W-473 1-6
W-475 1-5
W-476 2-9
W-479 2-7, 4-3, 4-5, 4-7
W-483 2-9
W-488 1-5
W-495 2-6, 3-2, 3-3
W-500 2-3, 2-5
W-501 3-2
W-502 2-3, 2-5, 2-10
W-504 2-5, 2-10
W-510 2-11
W-514 4-10
W-516 1-5, 5-3
W-517 2-3, 2-5, 2-9
W-518 2-9
W-520 2-12
W-521 4-5
W-525 1-5, 2-9
W-526 2-3, 2-5
W-527 2-9
W-528 4-10
W-538 4-10
W-539 5-3
W-629 2-3, 2-5, 2-10
W-793 2-3, 2-5
W-807 2-3, 2-5
W-1540 2-9
W-1553 2-9
W-1663 2-6
W10545 2-9
W14434 2-10
W14504 4-10



Morris Industries (USA) Inc.
P.O. Box 1117
Minot, ND 58702-1117
Phone: 866-663-8515
Fax: 866-663-8535
Web www.morris-industries.com/proag

It is the policy of PROAG to improve its products whenever it is possible to do so. PROAG reserves the right to make changes or add improvements at any time without incurring any obligation to make such changes on machines sold previously.