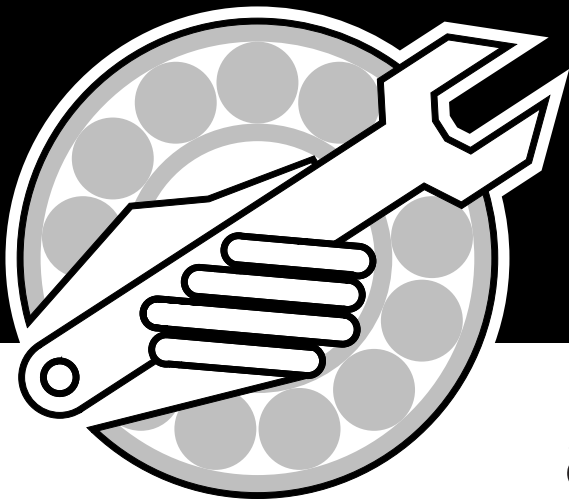




Parts Manual



881 Hay Hiker

IMPORTANT:

ALL ITEMS ARE IDENTIFIED WITH A PART NUMBER. Some of the smaller parts such as bolts, nuts, washers, etc. are not all shown, however, the quantity used are listed in the text for that section which they fit into. That particular quantity is always the quantity required for one complete assembly.

Smaller parts, which are welded together to construct a larger part, are not to be ordered as individual pieces, unless they have a part number to identify them.

Contact your nearest dealer for genuine repair parts. Dealers carry ample stock and are backed by the manufacturer and regional associations.

PAINT

Spray Cans:

Part Number	Description
W-4647	Red Spray Can
W-4648	Blue Spray Can
N31087	Sky White MORRIS Spray Can

Litre Cans:

Part Number	Description
Z-10	Red Paint/Litre
Z-11	Blue Paint/Litre

Table of Contents

Section 1:	
Frame & Hitch	1-1
Frame & Hitch	1-2
Hitch Jack	1-4
Section 2:	
Push Bar, Fork & Drive	2-1
Push Bar - Drive	2-2
Fork (4 ft Bale Mod)	2-4
Fork	2-6
Section 3:	
Axle & Wheels	3-1
Axles	3-2
Wheels	3-3
Section 4:	
Hydraulics	4-1
Hydraulics	4-2
Cylinders	4-4
Check Valve (C-4066)	4-6
Section 5:	
Lighting and Safety Signs	5-1
Marking Lights	5-2
Safety Signs	5-4
Section 6:	
Options	6-1
Side Rail Kit	6-2
Index	Index-i

Table of Contents

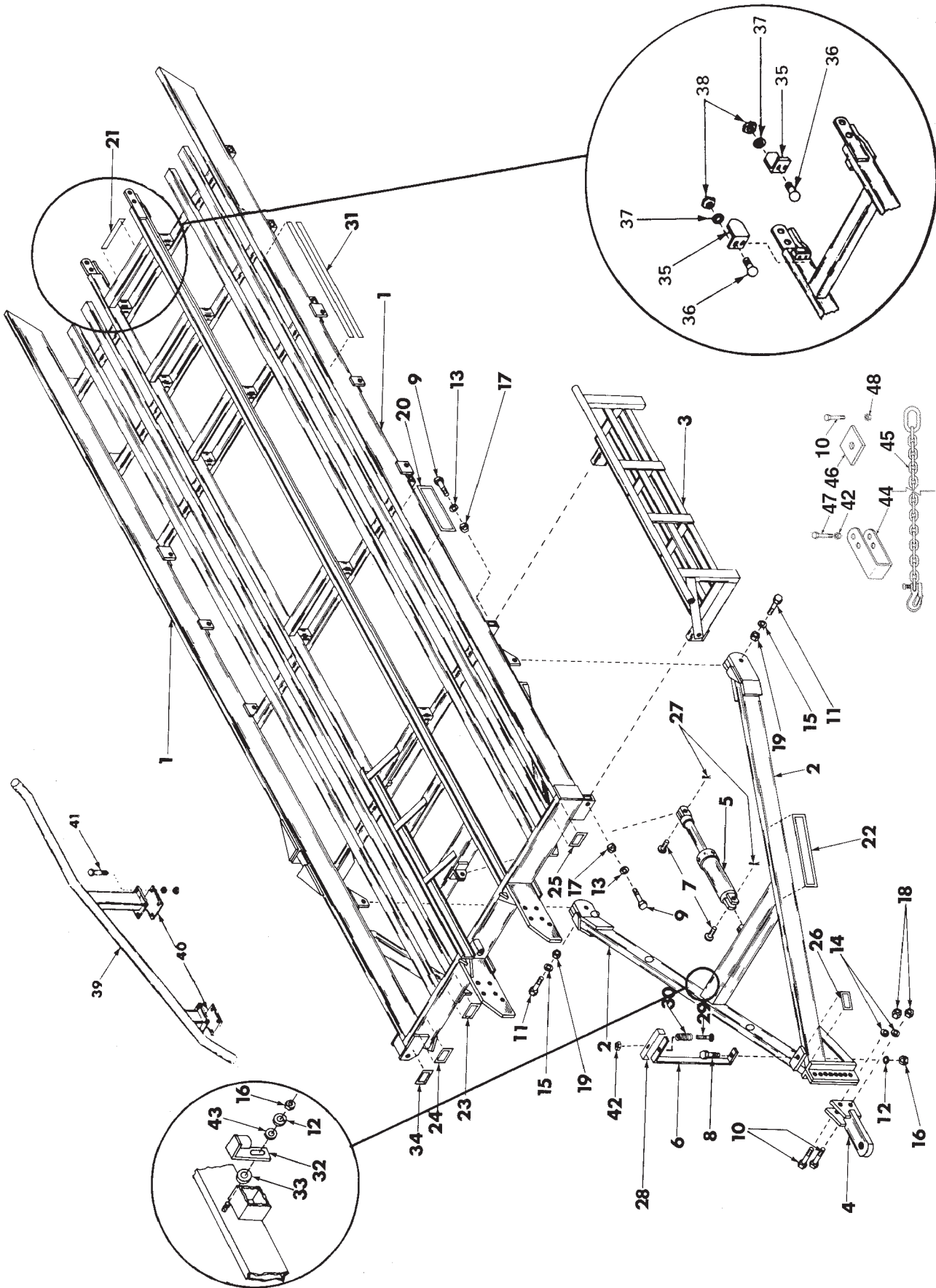
Notes

Section 1: Frame & Hitch

Section Contents

Frame & Hitch	1-2
Hitch Jack.....	1-4

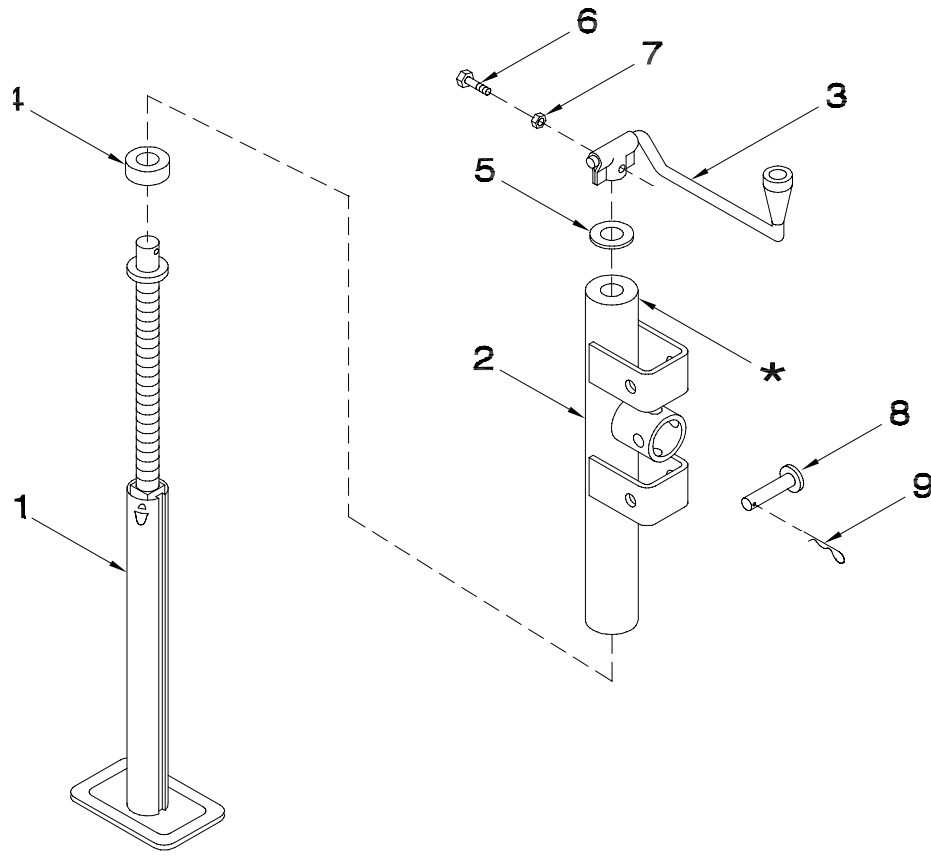
Frame & Hitch



Frame & Hitch

Item	Part No.	Description	Qty
1	K-5690	Main Frame (Prior to 2007)	1
	K40350	Main Frame - Extended (North America 2007 to Present) (International 2005 to Present)	1
2	K-3801	Main Hitch	1
3	K29170	Bale Stop	1
4	W-1039	Clevis (Bar Type)	1
	W-419	Clevis (Optional "U" Type) (Not Shown)	1
5	C-2040	Hydraulic Cylinder - 3 x 12 Lg	1
6	K-5345	Hose Holder	1
7	W-558	Pin - 1 Dia x 2 1/4 Lg	2
8	W-485	Hex Bolt - 1/2 x 1 1/4 Lg	1
9	W-480	Hex Bolt - 3/8 x 2 1/2 Lg	2
10	W-509	Hex Bolt - 3/4 x 2 1/2 Lg	3
11	K-5478	Hex Bolt - 1 x 3 1/2 Lg	2
12	W-525	Lockwasher - 1/2	2
13	W-523	Lockwasher - 3/8	2
14	W-527	Lockwasher - 3/4	2
15	C-705	Lockwasher - 1	2
16	W-516	Hex Nut - 1/2	2
17	W-514	Hex Nut - 3/8	2
18	W-518	Hex Nut - 3/4	2
19	W-520	Hex Nut - 1	2
20	K-5695	Decal - "Hay-Hiker 881"	2
21	12194	Decal - "PROAG" - 3 x 9 1/2 (Prior to 2007)	1
22	12507	Decal - "PROAG" - 5 1/2 x 17 3/8	2
23	N24301	Decal - "CAUTION - Read Operator's Manual"	1
24	C31201	Decal - "WARNING"	1
25	S-4785	Decal - "CAUTION - Stand Clear"	1
26	C-4262	Decal - "CAUTION - Never Remove"	1
27	W-4181	Cotter Pin - 1/4 x 2 Lg	2
28	K-5347	Hose Clamp	1
29	W-495	Hex Bolt - 1/2 x 4 Lg	1
30	K-5367	Hose Hanger Spring	1
31	K-5827	Decal - 3 1/2" Yellow & Blue Strip	8
32	K-5718	Relief Valve Cap (used on relief valve K-5686)	1
33	W-546	Washer - 1 1/8 x 14 Ga	1
34	K24212	Decal - "DANGER"	1
35	K11163	Hay Stripper	2
36	D-5259	Carriage Bolt - 5/16 x 3/4 Lg	4
37	W-522	Lockwasher - 5/16	4
38	W-513	Hex Nut - 5/16	4
39	K11166	Bale Divider (Optional) - Used on K-5690 Main Frame	1
	K40362	Bale Divider (Optional) - Used on K40350 Main Frame	
40	K11167	Clamp Plates (Optional)	2
41	W-493	Hex Bolt - 1/2 x 3 1/2 Lg (Optional)	8
42	F-3405	Locknut - 1/2	2
43	W-539	Flatwasher - 1/2	1
44	C18758	Centre Support	1
45	C18760	20,000 lb Safety Chain	1
46	C18757	Retainer Washer (Used on 20,000 lb Chain)	1
47	D-5519	Hex Bolt - 1/2 x 3 3/4 Lg	1
48	D-5275	Locknut - 3/4	1
49	N34476	Reflector - Red (Not Shown)	2
50	N34477	Reflector - Amber (Not Shown)	6
51	N34478	Reflector - Orange (Not Shown)	2
	K11165	Bale Divider Kit (Optional - Includes Items 39, 40 & 41) Note: KITS MUST BE ORDERED THROUGH WHOLEGOODS	

Frame & Hitch Hitch Jack



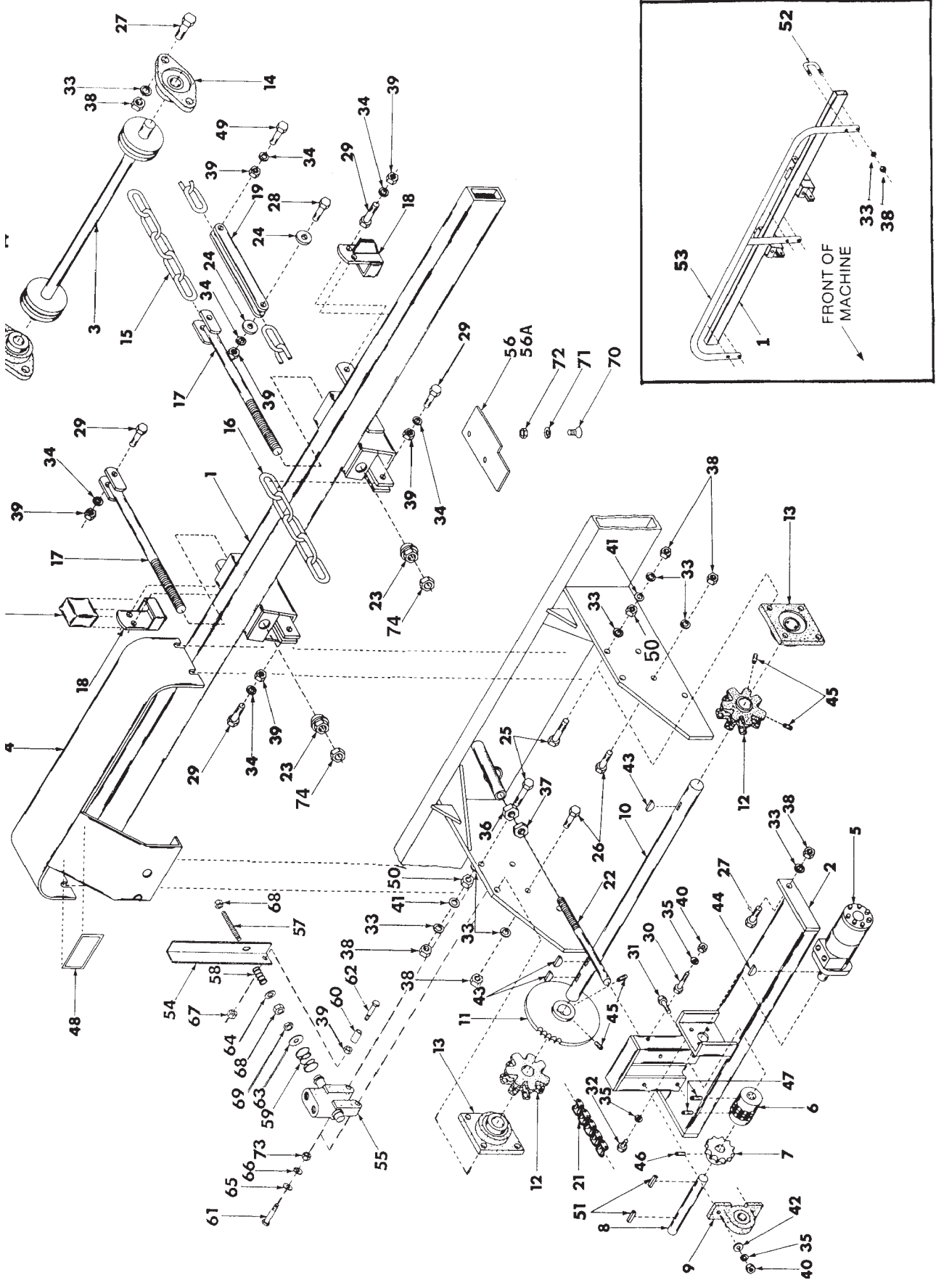
Item	Part No.	Description	Qty
1	N19965	Inner Tube Screw Assembly	1
2	N19966	Outer Tube	1
3	N19967	Handle Assembly	1
4	N19968	Thrust Bearing	1
5	N19969	Flatwasher	1
6	W-473	Hex Bolt - 5/16 x 1 1/2	1
7	D-5272	Locknut - 5/16	1
8	H10462	Button Head Pin	2
9	W-131	Hair Pin - #9 x 3 5/16 Lg	2
	N19866	Jack Assembly (Includes All Above Items)	
		NOTE: Jack can be identified by a Stamp (7000) near the Top	

Section 2: Push Bar, Fork & Drive

Section Contents

Push Bar - Drive	2-2
Fork (4 ft Bale Mod)	2-4
Fork.....	2-6

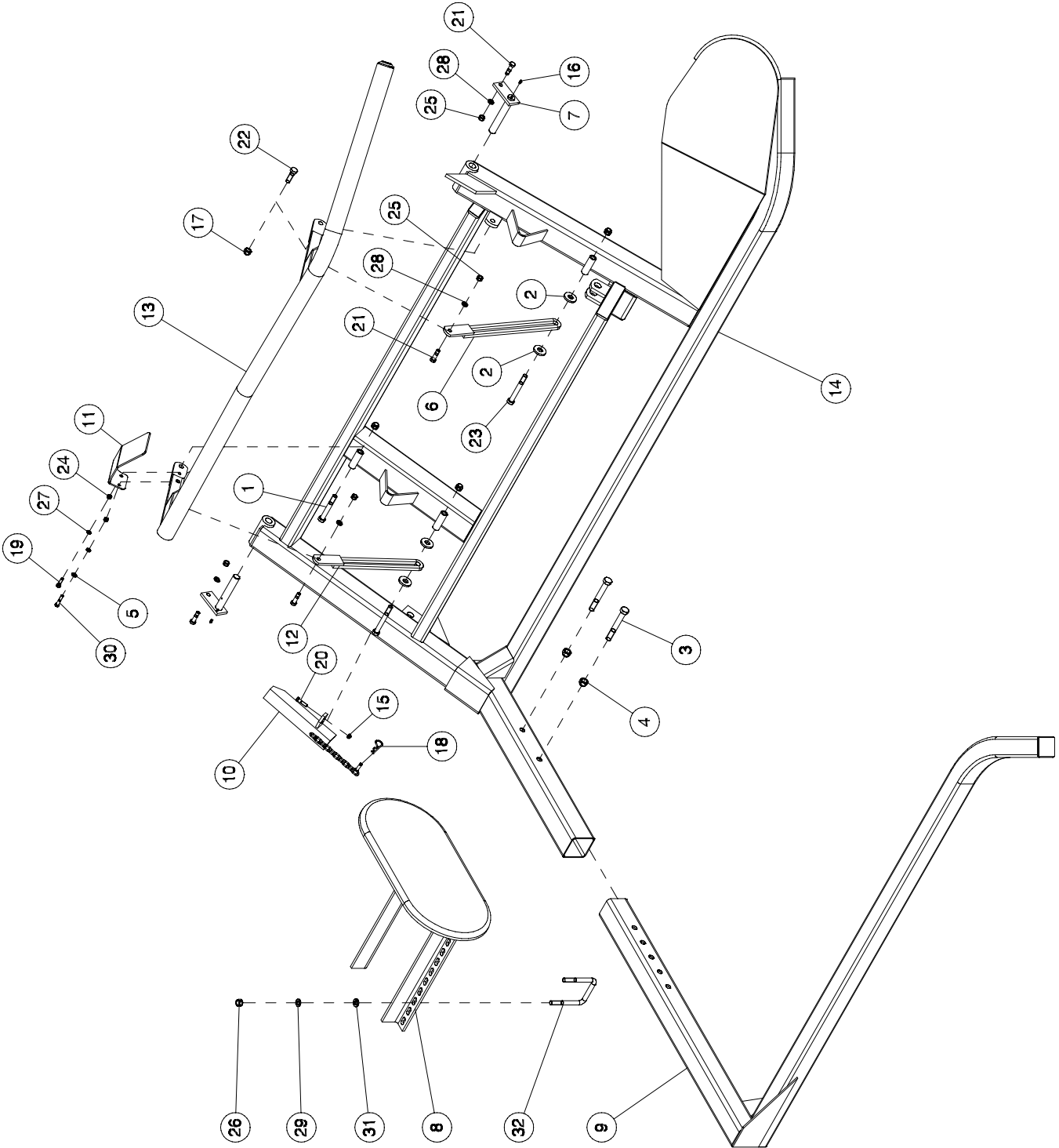
Push Bar, Fork & Drive Push Bar - Drive



Push Bar, Fork & Drive - Drive

Item	Part No.	Description	Qty	Item	Part No.	Description	Qty
1	K-5333	Bale Push Bar	1	37	S-711	Jam Nut - 1	1
2	K-5697	Motor Bracket	1	38	W-517	Hex Nut - 5/8	20
3	K-5335	Chain Roller	1	39	W-516	Hex Nut - 1/2	13
4	K-5350	Chain Guard	1	40	W-514	Hex Nut - 3/8	5
5	K-3813	Orbit Motor (See Hydraulics for additional parts)	1	41	W-540	Flatwasher - 5/8	4
6	K-3821	Coupler Assembly	1	42	W-538	Flatwasher - 3/8	8
7	K-4568	13 Tooth Drive Sprocket	1	43	W-1902	Woodruff Key - 3/8 x 1 3/8 Lg	3
8	K-5351	Jackshaft - Short - (1" Dia)	1	44	S-239	Woodruff Key - 1/4 x 7/8 Lg	1
9	S-91	Pillow Block Bearing Assembly	2	45	W-861	Setscrew - 3/8 x 5/8 Lg	6
10	K-5348	Jackshaft (1 3/4 Dia)	1	46	S-1203	Setscrew - 5/16 x 1/2 Lg	1
11	K-5358	40 Tooth Sprocket	1	47	W-554	Setscrew - 5/16 x 5/16 Lg	2
12	K-5352	Cast Drive Pulley	2	48	K-5486	Decal - "Caution Help Prevent Accidents"	1
13	S-1115	Flange Bearing Assembly	2	49	W-487	Hex Bolt - 1/2 x 1 3/4 Lg	2
14	K-5366	Flange Bearing Assembly	2	50	C-1472	Jam Nut - 5/8	4
15	K-5362	Chain, Top - 277" Lg (Calibrated)	2	51	S10730	Keystock - 1/4 x 1/4 x 1 1/4	4
		- Used on K-5690 Main Frame	2	52	C-219	U-Bolt	3
	K-5363	Chain, Top - 287" Lg (Calibrated)	2	53	K12536	Extension - Push Bar	1
		- Used on extended K40350 Main Frame	2	54	K25658	Activator Arm	1
16	K-5363	Chain, Bottom - 287" Lg (Calibrated)	2	55	S-4730	Selector Valve - 2 way	1
		- Used on K-5690 Main Frame	2	56	K25838	Plate - Left Wear - Push Bar	1
	K40365	Chain, Bottom - 299" Lg (Calibrated)	2	56A	K25837	Plate - Right Wear - Push Bar	1
		- Used on extended K40350 Main Frame	2	57	K25657	Rod - Threaded	1
17	K-5342	Chain Tightener	2	58	W-342	Spring - Slip Clutch (9/16 ID x 1 OD x 1 13/16 Lg)	1
18	K-5343	Bushing Holder	2	59	K25655	Spring - 1 11/32 ID x 2 Lg	1
19	K-5336	Clamp Strap	4	60	K25656	Spacer	1
20	K24350	Nylon Wear Block	2	61	J12217	Hex Bolt - 5/16 x 2 1/4 Lg	2
21	K-5365	Roller Chain No 60 (48 Links with Connectors)	1	62	W-492	Hex Bolt - 1/2 x 3 Lg	1
	W-807	Chain Link - #60 Connector	1	63	W14504	Washer - 13/32 ID x 1 1/2 OD x 1/8	1
	W-808	Chain Link - #60 Offset	1	64	D-5579	Washer - 13/32 ID x 1 OD x 16 Ga	1
22	K-5337	Adjusting Rod	1	65	D-5488	Washer - 11/32 ID x 11/16 OD x 16 Ga	2
23	K-5476	Chain Tightener Nut	2	66	W-522	Lockwasher - 5/16	2
24	K-5477	Washer	4	67	F-3405	Locknut - 1/2 Unitorque	1
25	W-502	Hex Bolt - 5/8 x 2 3/4 Lg	4	68	M-3388	Locknut - 3/8 Unitorque	2
26	W-499	Hex Bolt - 5/8 x 2 Lg	4	69	S-748	Jam Nut - 3/8	1
27	W-498	Hex Bolt - 5/8 x 1 3/4 Lg	6	70	N25463	Countersunk Machine Screw - 3/8 x 3/4 Lg	4
28	W-490	Hex Bolt - 1/2 x 2 1/2 Lg	2	71	W-523	Lockwasher - 3/8	4
29	W-488	Hex Bolt - 1/2 x 2 Lg	8	72	K-5567	Hex Nut - 3/8 UNF	4
30	W-479	Hex Bolt - 3/8 x 2 1/4 Lg	1	73	W-513	Hex Nut - 5/16	2
31	W-477	Hex Bolt - 3/8 x 1 1/2 Lg	4	74	W-575	Jam Nut - 3/4	2
32	W-475	Hex Bolt - 3/8 x 1 Lg	4				
33	W-526	Lockwasher - 5/8	24				
34	W-525	Lockwasher - 1/2	12				
35	W-523	Lockwasher - 3/8	9				
36	W-520	Hex Nut - 1	1				

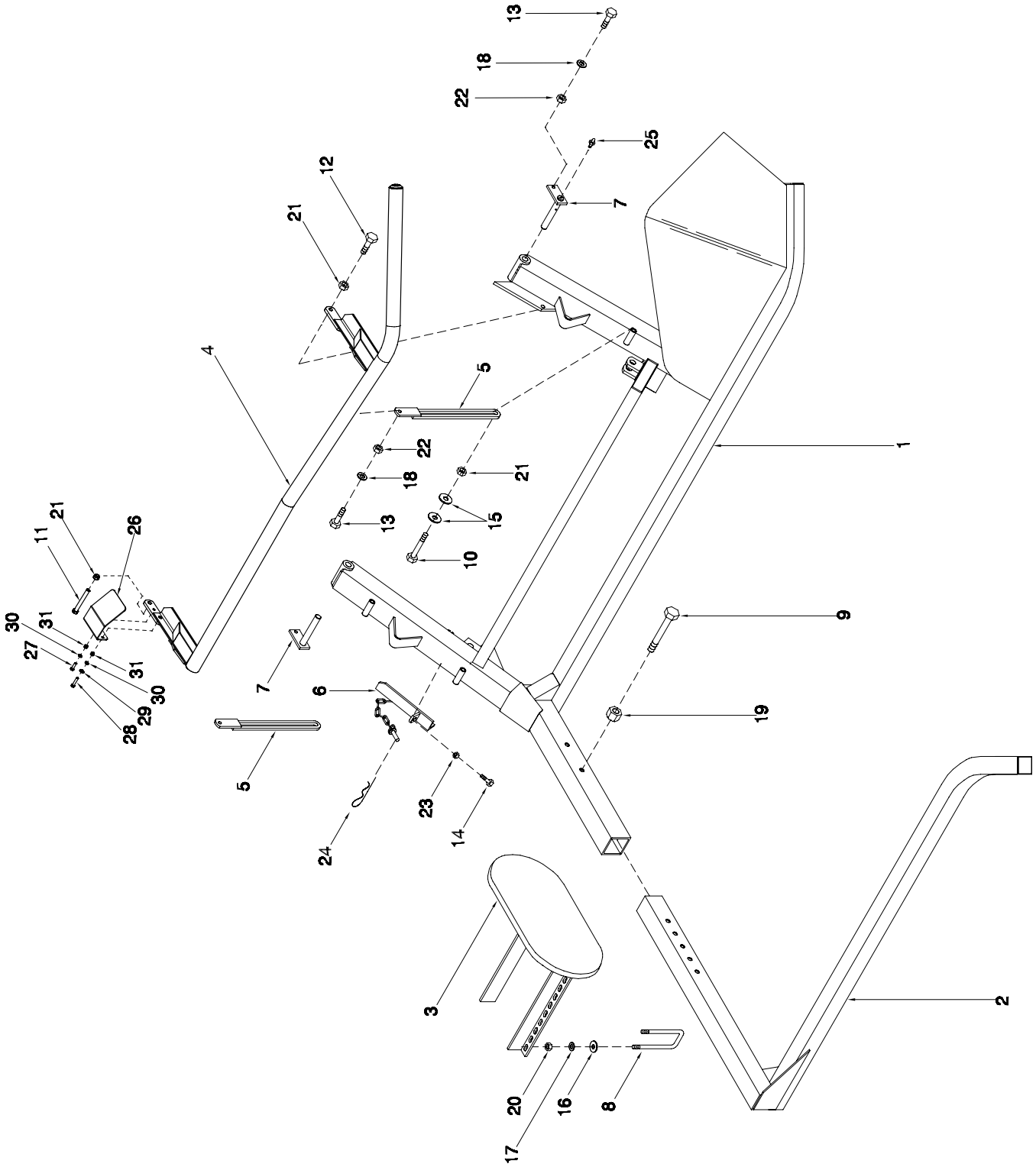
Push Bar, Fork & Drive Fork (4 ft Bale Mod)



Push Bar, Fork & Drive - Fork (4 ft Bale Mod)

Item	Part No.	Description	Qty
1	C-852	Hex Bolt - 5/8 x 4 1/2 Lg	1
2	C-1526	Spacer Washer	4
3	C-3919	Hex Bolt - 3/4 x 5 1/2 Lg	2
4	D-5275	Locknut - 3/4 Unitorque	2
5	D-5489	Washer - 13/32 ID x 13/16 OD x 16 Ga	1
6	K-5340	Deflector Bar Adjustment Loop	1
7	K-5341	Hinge Pin -	2
8	K21447	Bale Stop	1
9	K21986	Outer Fork	1
10	K25654	Transport Lock	1
11	K34960	Guard	1
12	K40353	Adjustment Loop Rear - 4 Ft Bale Mod	1
13	K40355	Bale Deflector - 4 Ft Bale Mod	1
14	K40360	Inner Fork W/Bale Turner - 4 Ft Bale Mod	1
15	M-3388	Locknut - 3/8 Unitorque	1
16	S-752	Grease Fitting - 1/4 Straight	2
17	S-1197	Locknut - 5/8 Unitorque	4
18	W-131	Hairpin - 5/32	1
19	W-187	Hex Bolt - 3/8 x 1 1/4 Lg	1
20	W-477	Hex Bolt - 3/8 x 1 1/2 Lg	1
21	W-487	Hex Bolt - 1/2 x 1 3/4 x 3/4 Lg Thread	4
22	W-499	Hex Bolt - 5/8 x 2 Lg	1
23	W-506	Hex Bolt - 5/8 x 5 Lg	2
24	W-514	Hex Nut - 3/8	2
25	W-516	Hex Nut - 1/2	4
26	W-517	Hex Nut - 5/8	4
27	W-523	Lockwasher - 3/8	2
28	W-525	Lockwasher - 1/2	4
29	W-526	Lockwasher - 5/8	4
30	W-619	Hex Bolt - 3/8 x 1 3/4 Lg	1
31	W-793	Washer - 3/16	4
32	W14503	U-Bolt - 5/8 x 4 x 5 1/4	2

Push Bar, Fork & Drive Fork



Push Bar, Fork & Drive - Fork

Item	Part No.	Description	Qty
1	K25638	Inner Fork	1
2	K21986	Outer Fork	1
3	K21447	Bale Stop	1
4	K34954	Bale Deflector	1
5	K-5340	Adjustment Loop	2
6	K25654	Transport Lock	1
7	K-5341	Hinge Pin	2
8	W14503	U-Bolt	2
9	C-3919	Hex Bolt - 3/4 x 5 1/2 Lg	1
10	W-506	Hex Bolt - 5/8 x 5 Lg	2
11	C-852	Hex Bolt - 5/8 x 4 1/2 Lg	1
12	W-499	Hex Bolt - 5/8 x 2 Lg	1
13	W-487	Hex Bolt - 1/2 x 1 3/4 Lg	4
14	W-477	Hex Bolt - 3/8 x 1 1/2 Lg	1
15	C-1526	Washer - Wear	4
16	W-793	Flatwasher - 5/8	4
17	W-526	Lockwasher - 5/8	4
18	W-525	Lockwasher - 1/2	4
19	D-5275	Locknut - 3/4	1
20	W-517	Hex Nut - 5/8	4
21	S-1197	Locknut - 5/8	4
22	W-516	Hex Nut - 1/2	4
23	M-3388	Locknut - 3/8	1
24	W-131	Hair Pin	1
25	S-752	Grease Zerk - 1/4 Straight	2
26	K34960	Guard	1
27	W-187	Hex Bolt - 3/8 x 1 1/4 Lg	1
28	W-619	Hex Bolt - 3/8 x 1 3/4 Lg	1
29	D-5489	Flatwasher - 3/8	1
30	W-523	Lockwasher - 3/8	2
31	W-514	Hex Nut - 3/8	2

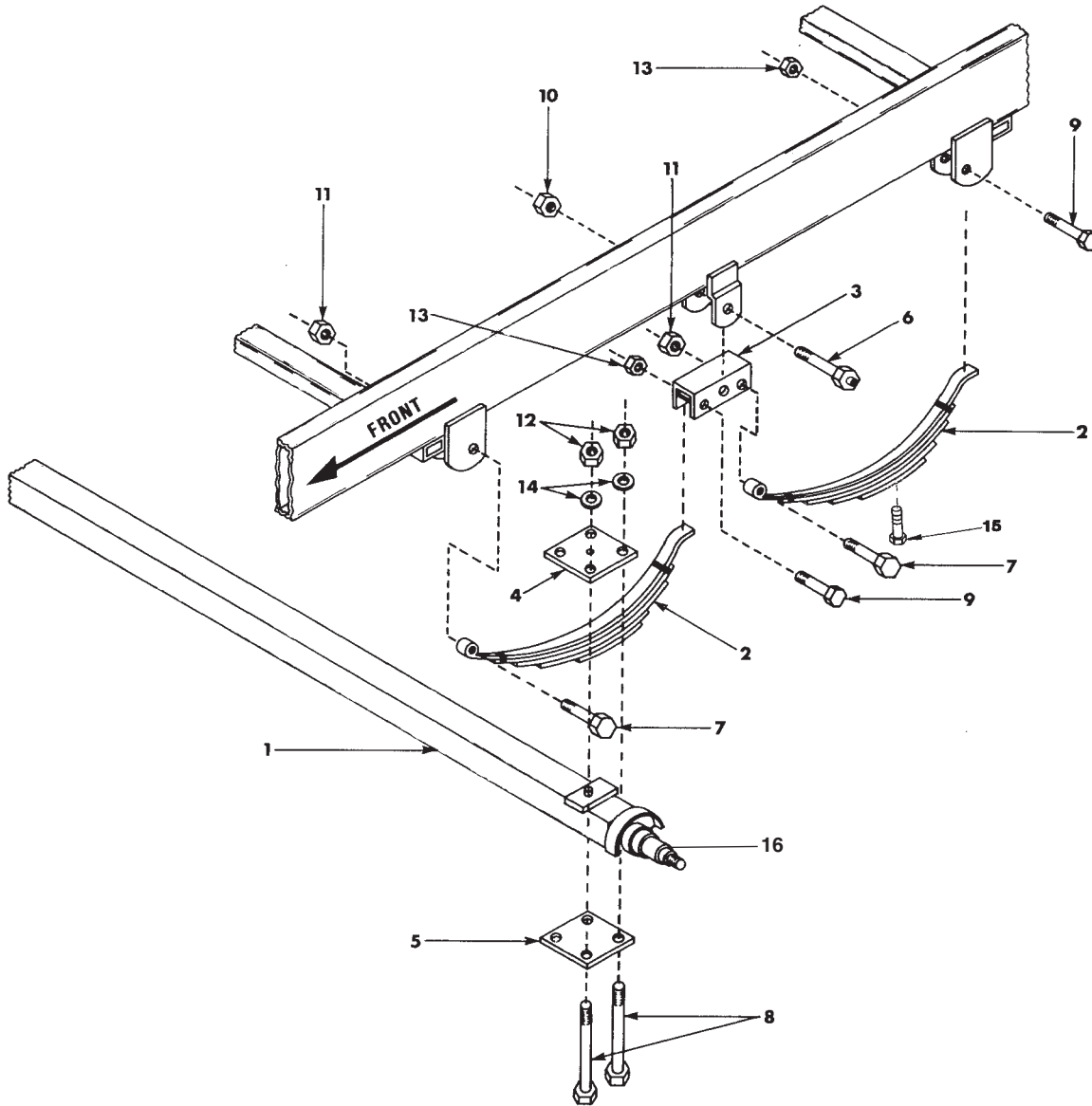
Notes

Section 3: Axle & Wheels

Section Contents

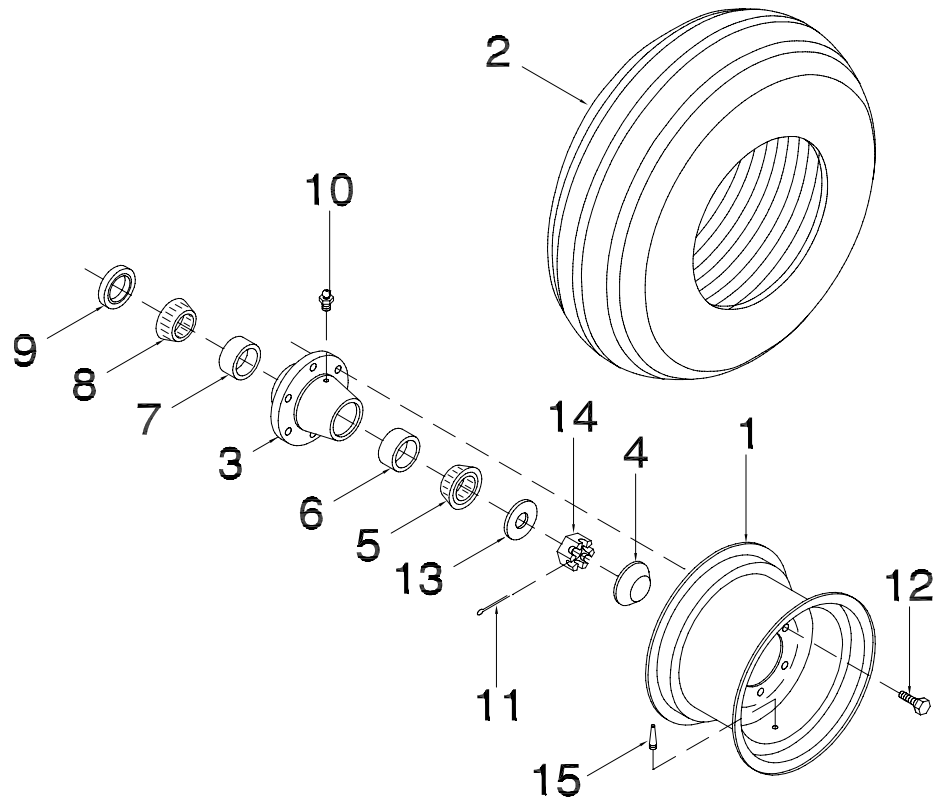
Axles	3-2
Wheels	3-3

Axles & Wheels Axles



Item	Part No.	Description	Qty
1	K-5331	Axle	2
2	K-5692	Leaf Spring (Slipper Type)	4
	K21129	Shackle Bushing (Not Shown)	4
3	K-5700	Equalizer Arm	2
4	K-5346	Spring Mounting Plate	4
5	K-5349	Bottom Spring Mounting Plate	4
6	K-5693	Greaseable Bolt - 3/4 x 4 1/2 Lg	2
7	K-5702	Hex Bolt - 5/8 x 3 5/8 Lg	4
8	W-3687	Hex Bolt - 1/2 x 8 Lg	16
9	W-481	Hex Bolt - 3/8 x 3 1/2 Lg	4
10	K29464	Locknut - 3/4 (Jam Clevlok)	2
11	K-5703	Locknut - 5/8	4
12	W-516	Hex Nut - 1/2	16
13	M-3388	Locknut - 3/8	4
14	W-525	Lockwasher - 1/2	16
15	K-4788	Hex Bolt - Leaf Spring - 3/8 x 3 Lg	4
16	AF-116	Spindle - Weld-in	

Axles & Wheels Wheels



Item	Part No.	Description	Qty
1	C-1473	Rim - 15 x 8 - 6 Bolt	1
2	K-5688	Tire - 11L x 15 FI Load Range D (8 Ply Rating)	1
3	C-1463	Hub (Includes Items 6, 7 & 10)	1
4	C-1522	Dust Cap	1
5	W-1474	Outer Wheel Bearing - LM48548	1
6	W-1537	Outer Bearing Cup	1
7	W-1538	Inner Bearing Cup	1
8	W-1475	Inner Wheel Bearing - LM603049	1
9	C-1521	Seal	1
10	S-752	Grease Nipple - 1/4 NPT Strait	1
11	W-1416	Cotter Pin - 3/16 x 1 1/2	1
12	W-1383	Wheel Stud Bolt - 9/16 x 1 11/16	6
13	C-3258	Washer - 2 OD x 1 1/16 ID x 3/16	1
14	S-1311	Slotted Nut - 1" SAE	1
15	C17348	Valve Stem	1

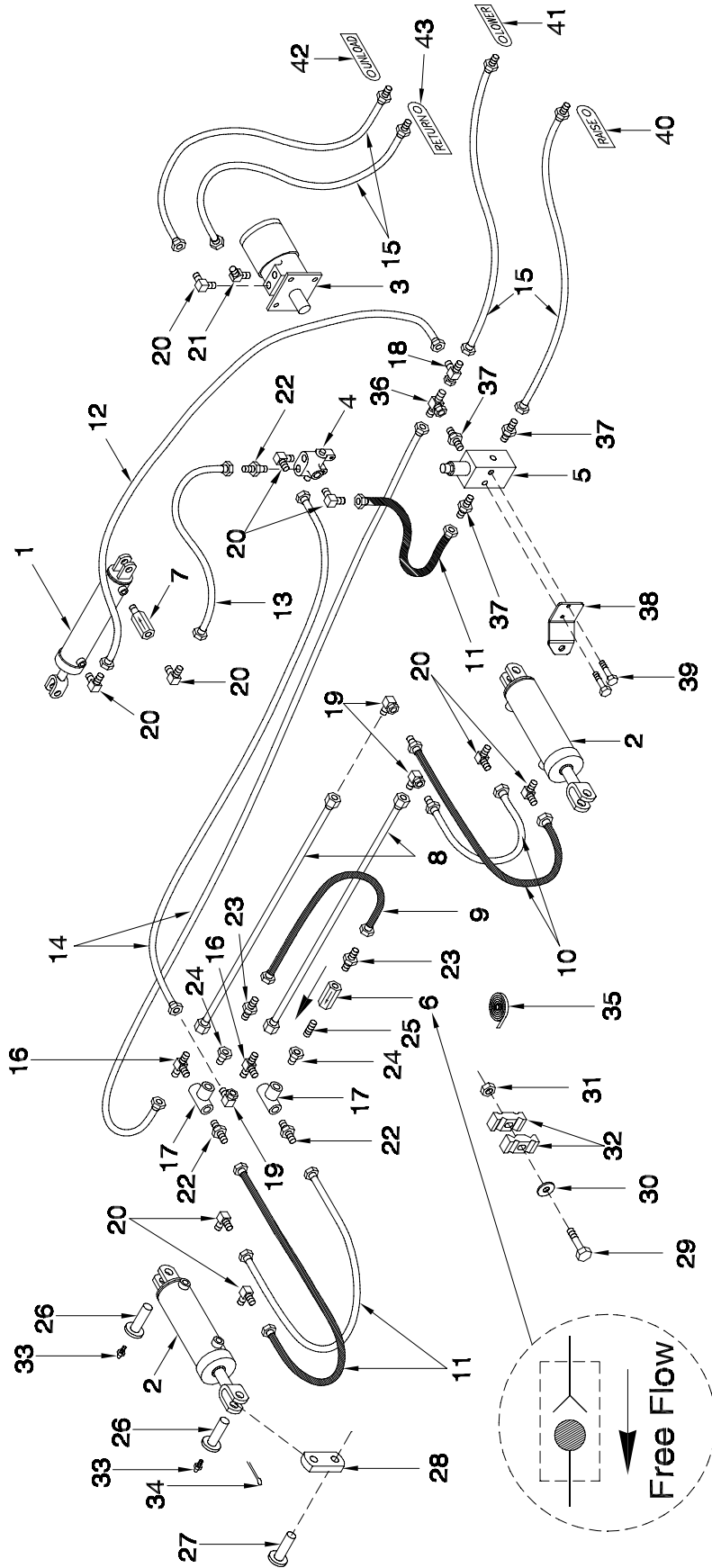
Notes

Section 4: Hydraulics

Section Contents

Hydraulics	4-2
Cylinders	4-4
Check Valve (C-4066)	4-6

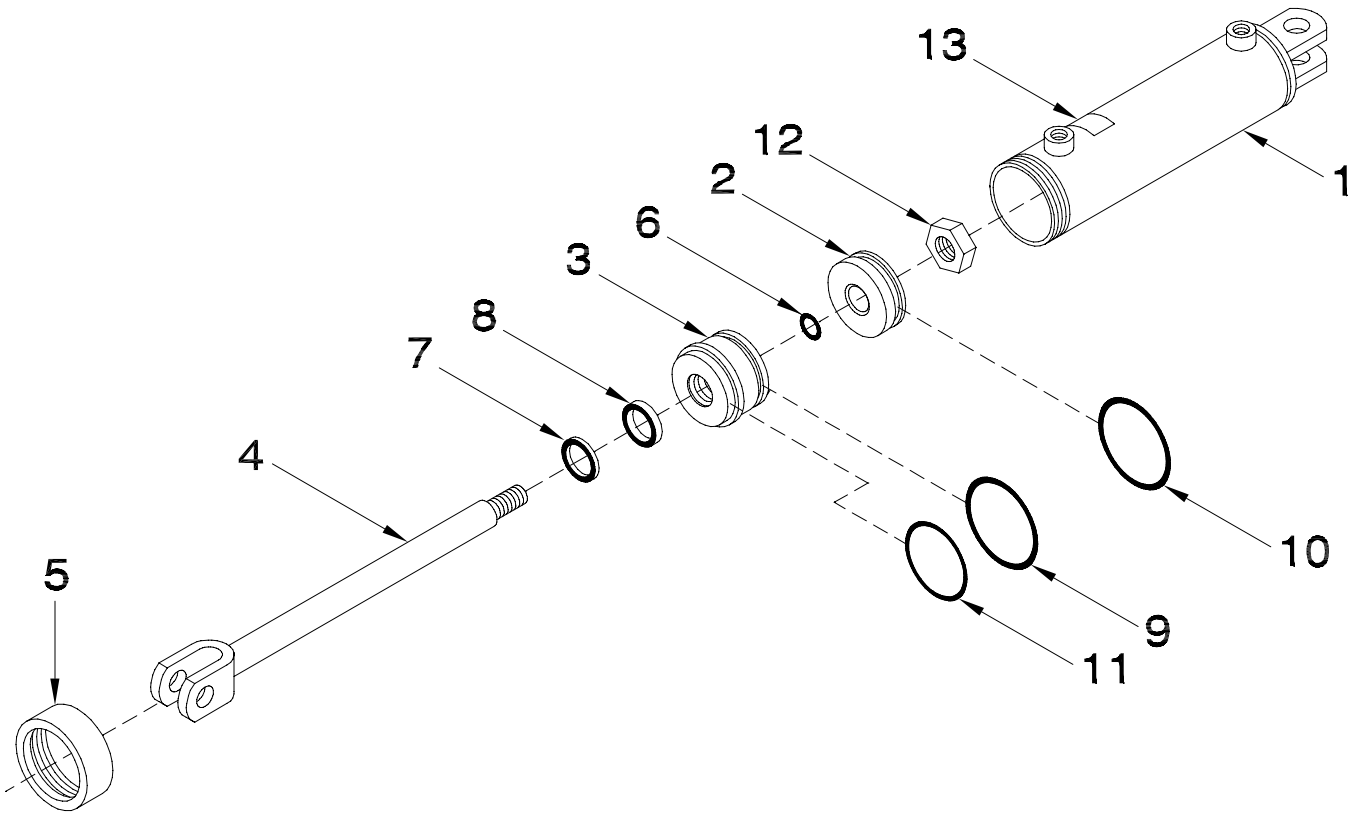
Hydraulics



Hydraulics

Item	Part No.	Description	Qty
1	C-2040	Hydraulic Cylinder - 3 x 12 BBP	1
2	C-2246	Hydraulic Cylinder - 3 1/2 x 8	2
3	K-3813	Orbit Motor	1
	K12962	Seal Kit for K-3818 Orbit Motor	
	K15492	Mounting Flange for K-3818 Orbit Motor - 4 Bolt	
	K18593	Screw - 5/16 - 24 UNF x 7/8 - 12PT - for Mounting Flange	
	S-239	Woodruff Key - 1/4 x 7/8	
4	S-4730	Selector Valve	1
	N31601	Seal Kit	1
5	K37578	Relief Valve	1
6	K47702	Check Valve - 500 PSI	1
7	H25615	Flow Restrictor (FR-50-093)	1
8	C-4363	Oil Line - 5/8 x 38 lg	2
9	C-4467	Hyd Hose - 1/4 x 16 Lg w/ 9/16-18 FJIC	1
10	C-4387	Hyd Hose - 1/2 x 36 Lg w/ 7/8-14 FJIC Ends	2
11	C-4404	Hyd Hose - 1/2 x 36 Lg w/ 7/8-14FJIC Ends	3
12	K-5685	Hyd Hose - 1/2 x 48 Lg w/ 7/8-14 FJIC Ends	1
13	F-4565	Hyd Hose - 1/2 x 60 Lg w/ 7/8-14 FJIC Ends	1
14	H-4410	Hyd Hose - 1/2 x 96 Lg w/ 7/8-14 FJIC Ends	2
15	H-4479	Hyd Hose - 1/2 x 96 Lg w/ 7/8-14 FJIC x 1/2 MNPT Ends	4
16	C-4396	Male Tee - (2) 7/8-14 JIC x (1) 1/2 MNPT	3
17	W-4056	Female Tee - (3) 1/2 NPT	2
18	H18746	Swivel Tee - (2) 7/8-14 MJIC x (1) 7/8-14 FJIC	1
19	K-5806	90 deg Elbow - 7/8-14 MJIC x 7/8-14 FJIC	3
20	C-4400	90 deg Male Elbow 7/8-14 MJIC x 1/2 MNPT	9
21	C-4402	45 deg Male Elbow 7/8-14 JIC x 1/2 NPT	1
22	C-4399	Male Connector - 7/8-14 JIC x 1/2 NPT	5
23	C-4405	Male Connector - 9/16-18 JIC x 3/8 NPT	2
24	C-719	Adaptor - 1/2 MNPT x 3/8 FNPT	2
25	C-724	Nipple - 3/8 NPT	1
26	K-5694	Pin, Greaseable - 1 x 2 1/4 UL	4
27	W-558	Pin - 1 x 2 1/4 UL	2
28	K18500	Link	2
29	W-480	Bolt - 3/8 x 2 1/2 Lg Hex UNC	2
30	D-5498	Flat Washer - 3/8	2
31	W-538	Lock Nut - 3/8 UNC	2
32	C-4698	Nylon Oil Line Clamp	4
33	S-752	Grease Zerk - 1/4 x 28 UNF STR	4
34	W-4181	Cotter Pin - 1/4 x 2 Lg	6
35	W-3022	Teflon	1 Roll
36	F24559	Tee - (1) 7/8-14 FJIC x (2) 7/8-14 MJIC	1
37	C14840	Connector - 7/8-14 MJIC x 3/4-16 MORB	3
38	K37577	Bracket	1
39	K-3830	Hex Bolt - 1/4 x 1/2 Lg Bolt	2
40	K29976	Tag - Hose ID - Fork/Bed - RAISE	1
41	K29977	Tag - Hose ID - Fork/Bed - LOWER	1
42	K29978	Tag - Hose ID - Push Bar - Unload	1
43	K29979	Tag - Hose ID - Push Bar - Return	1

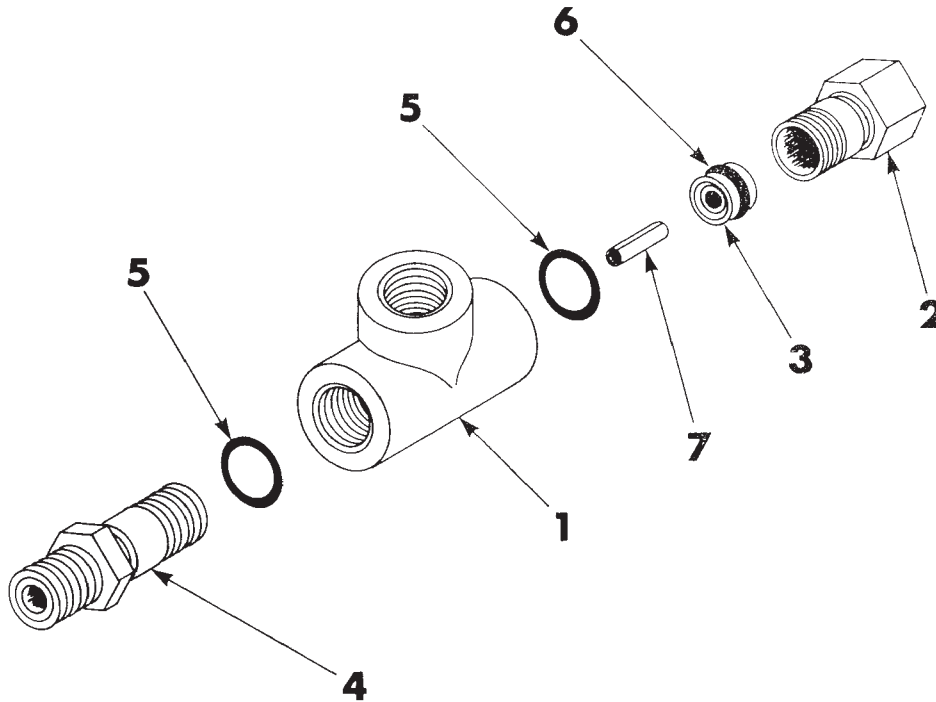
Hydraulics Cylinders



Hydraulics - Cylinders

Item	Part No.	Description	Qty
C-2246 - 3 1/2 x 8 - AG CYLINDER			
1	C-2189	Barrel	1
2	C-2039	Piston	1
3	C-2037	Gland	1
4	C-2239	Shaft - 1 1/4 Dia	1
5	C-2028	Collar	1
6	C-2016	Shaft Static Seal	1
7	C-2007	Shaft Wiper	1
8	C-2008	Shaft Seal	1
9	C-2029	Gland Static Seal	1
10	C-2022	Piston Seal	1
11	C-2214	O-Ring	1
12	C-2017	Shaft Nut - 7/8	1
13	C-2247	Part No Plate	1
	C-2246	Cylinder Assembly (Includes All Above Items)	
	C-2036	Seal Kit (Includes Items 6, 7, 8, 9, 10 & 11)	
C-2040 - 3 x 12 - GLAND-BY-PASS CYLINDER			
1	C-2047	Barrel	1
2	C-2014	Piston	1
3	C-2010	Gland	1
4	C-2027	Shaft	1
5	C-2009	Collar	1
6	C-2016	Shaft Static Seal	1
7	C-2007	Shaft Wiper	1
8	C-2008	Shaft Seal	1
9	C-2012	Gland Static Seal	1
10	C-2015	Piston Seal	1
11	C-2214	O-Ring	1
12	C-2017	Shaft Nut	1
13	C-2048	Part No Plate	1
	C-2040	Cylinder Assembly (Includes All Above Items)	
	C-2002	Seal Kit (Includes Items 6, 7, 8, 9, 10 & 11)	

Hydraulics Check Valve (C-4066)



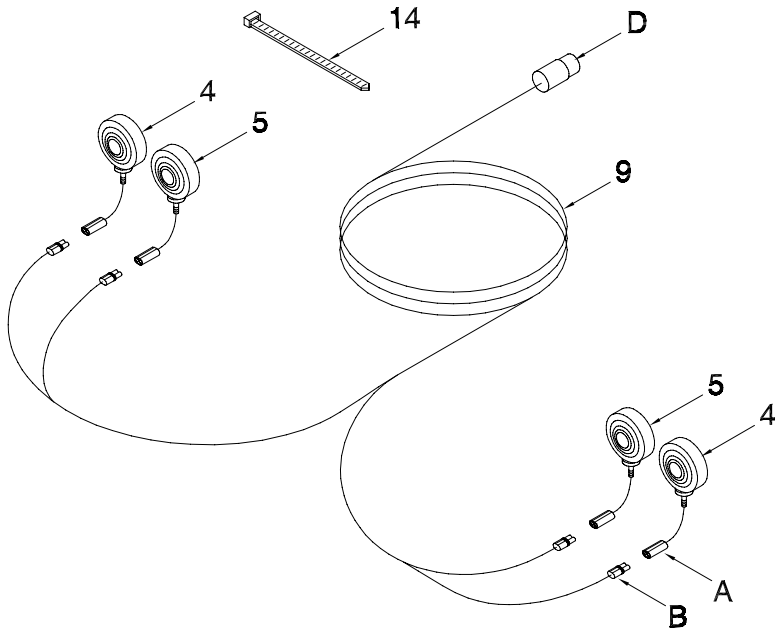
Item	Part No.	Description	Qty
1	C21511	Ductile Tee	1
2	C12512	Piston Housing	1
3	C12513	Piston	1
4	C12514	Ball Seat Housing	1
5	C12518	"O" Ring	1
6	C12519	"O" Ring	1
7	C12520	Roll Pin - 3/16 x 3/4	1
	C-4066	Check Valve Assembly (Includes All Above Items)	

Section 5: Lighting and Safety Signs

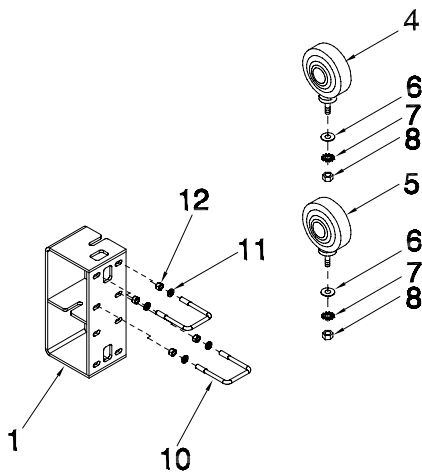
Section Contents

Marking Lights	5-2
Safety Signs	5-4

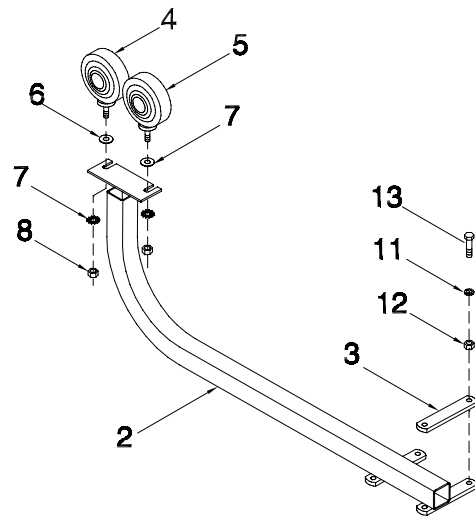
Lighting Marking Lights



881 HAY HIKER with SIDE RAILS



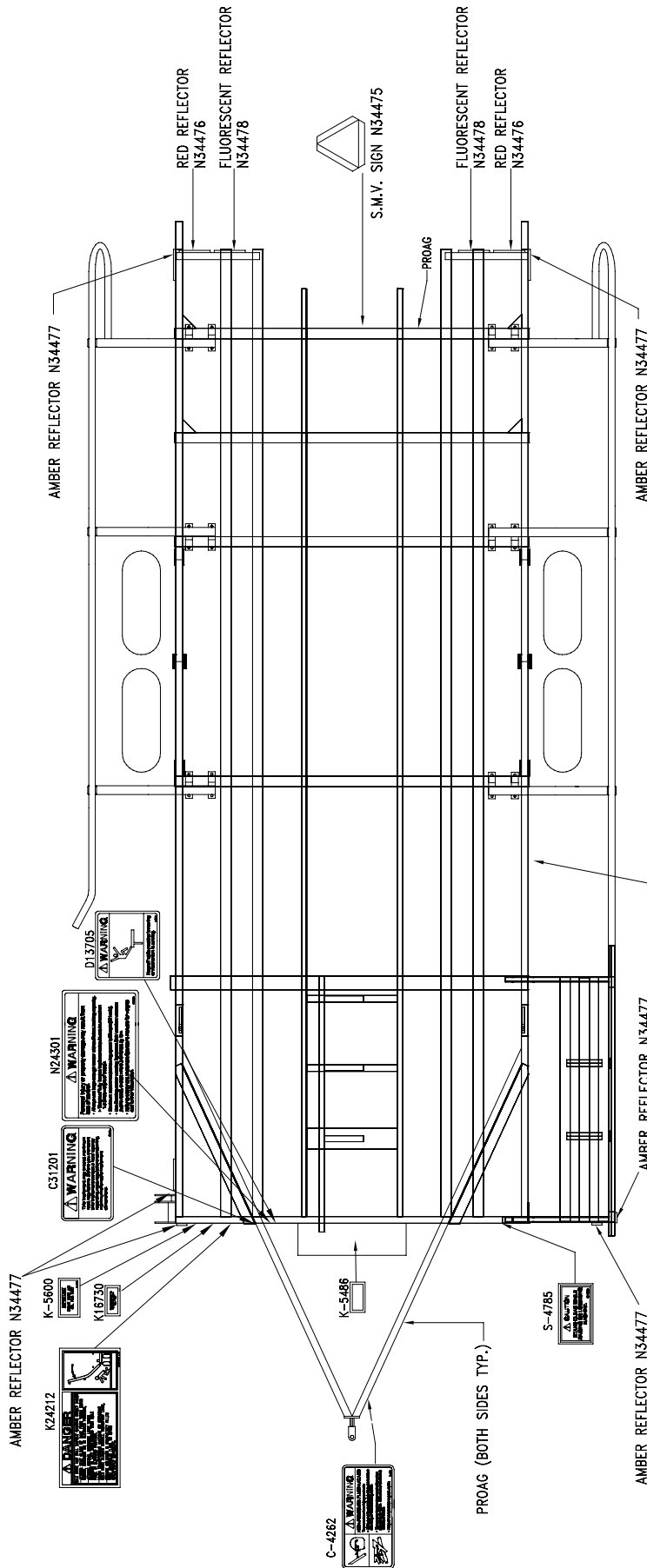
881 HAY HIKER without SIDE RAILS



Lighting - Marking Lights

Item	Part No.	Description	Qty
1	K37581	Bracket - Mounting	2
2	K31994	Bracket - Mounting	2
3	N19109	Strap - Mounting	4
4	C32765	Light - Amber	2
5	C32766	Light - Red	2
6	W-539	Flat Washer - 1/2	1
7	D-5280	Star Washer - 1/2	2
8	W-516	Hex Nut - 1/2	1
9	C31437	Wiring Harness - Main	1
10	N34950	U - Bolt - 3/8x 2 1/2 x 3 1/2 UL	2
11	W-523	Lockwasher - 3/8	8
12	W-514	Hex Nut - 3/8	8
13	W-481	Hex Bolt - 3/8 x 3 1/2 lg	8
14	D-4951	Nylon Tie Strap - 7 3/8 lg	5
14A	D-4838	Nylon Tie Strap - 14 1/2 lg	20
	C32761	Red Acrylic Lens	
	C32762	Amber Acrylic Lens	
	C32515	Bulb - #1156	
A	C32681	Receptacle Connector Assembly - GRAY - 2 Pin	
B	C32682	Plug Connector Assembly - GRAY - 2 Pin	
D	C32690	Connector Assembly - 7 Pin Plug (Complete with Cable Protector Spring)	
	C32688	Interior - Plug - 7 Pin Connector	
	C32689	Cable Protector Spring - Plug - 7 Pin Connector	
		ORDER KITS THROUGH PARTS ONLY	
	K30753	881 Hay Hiker with Side Rails Light Kit-Includes items 1, 4-9, 10, 11-16A	
	K31995	881 Hay Hiker without Side Rails Light Kit-Includes items 2, 3, 4-9, 11-13, 14 and 14A	

Safety Signs



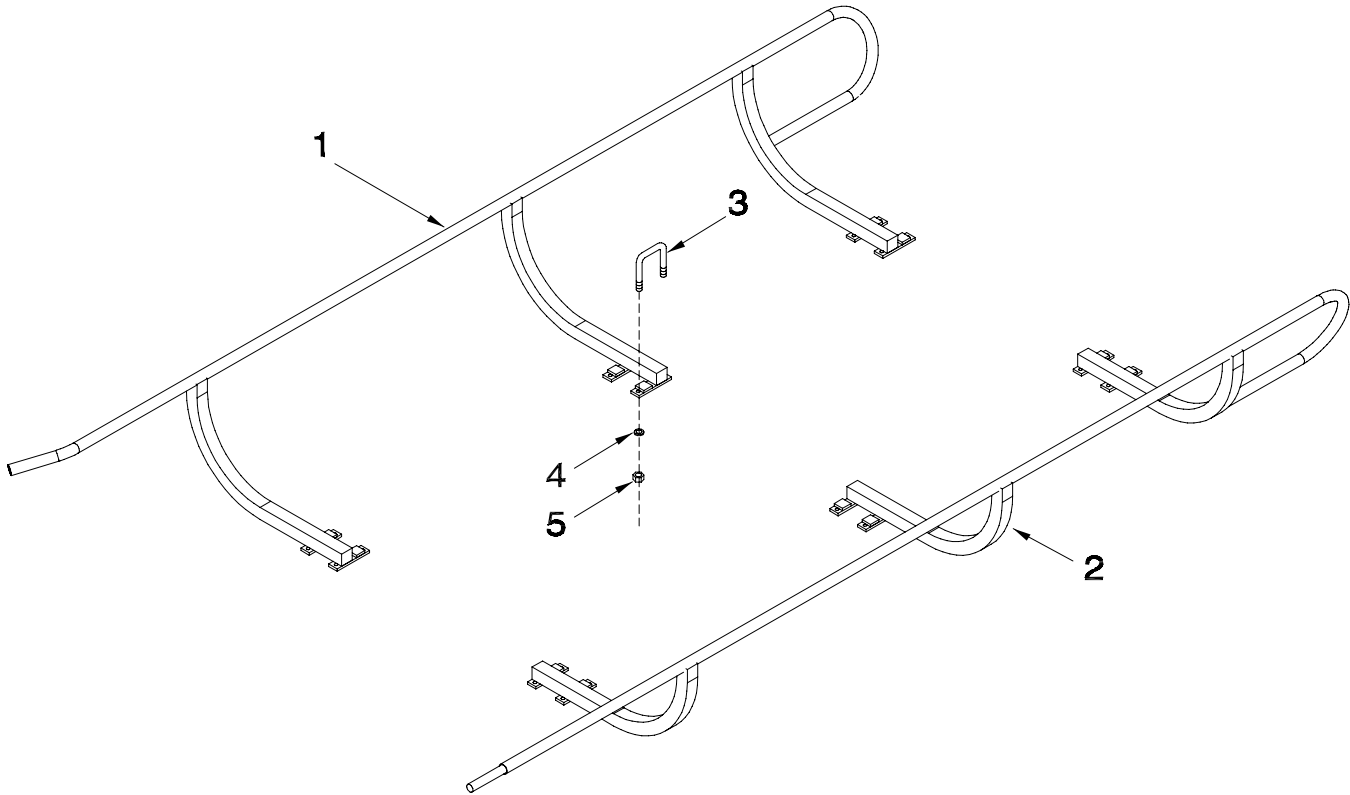
HAY-HIKER 881
K-5695 (BOTH SIDES TYP.)

Section 6: Options

Section Contents

Side Rail Kit	6-2
---------------------	-----

Options Side Rail Kit



Item	Part No.	Description	Qty
1	K29160	Right Side Rail	1
2	K29165	Left Side Rail	1
3	K29164	U-Bolt - 5/8	6
4	W-526	Lockwasher - 5/8	12
5	W-517	Hex Nut - 5/8	12
	K29177	Side Rail Kit (Includes All Above Items)	
		Kits must be ordered through Wholegoods	

Index

12194 1-3
12507 1-3

A

AF-116 3-3

C

C-1463 3-3
C-1472 2-3
C-1473 3-3
C-1521 3-3
C-1522 3-3
C-1526 2-5, 2-7
C-2002 4-5
C-2007 4-5
C-2008 4-5
C-2009 4-5
C-2010 4-5
C-2012 4-5
C-2014 4-5
C-2015 4-5
C-2016 4-5
C-2017 4-5
C-2022 4-5
C-2027 4-5
C-2028 4-5
C-2029 4-5
C-2036 4-5
C-2037 4-5
C-2039 4-5
C-2040 1-3, 4-3, 4-5
C-2047 4-5
C-2048 4-5
C-2189 4-5
C-219 2-3
C-2214 4-5
C-2239 4-5
C-2246 4-3, 4-5
C-2247 4-5
C-3258 3-3
C-3919 2-5, 2-7
C-4066 4-6
C-4262 1-3
C-4363 4-3
C-4387 4-3
C-4396 4-3
C-4399 4-3
C-4400 4-3
C-4402 4-3
C-4404 4-3
C-4405 4-3
C-4467 4-3
C-4698 4-3
C-705 1-3
C-719 4-3

C-724 4-3
C-852 2-5, 2-7
C12512 4-6
C12513 4-6
C12514 4-6
C12518 4-6
C12519 4-6
C12520 4-6
C14840 4-3
C17348 3-3
C18757 1-3
C18758 1-3
C18760 1-3
C21511 4-6
C31201 1-3
C31437 5-3
C32515 5-3
C32681 5-3
C32682 5-3
C32688 5-3
C32689 5-3
C32690 5-3
C32761 5-3
C32762 5-3
C32765 5-3
C32766 5-3

D

D-4838 5-3
D-4951 5-3
D-5259 1-3
D-5272 1-4
D-5275 1-3, 2-5, 2-7
D-5280 5-3
D-5488 2-3
D-5489 2-5, 2-7
D-5498 4-3
D-5519 1-3
D-5579 2-3

F

F-3405 1-3, 2-3
F-4565 4-3
F24559 4-3

H

H-4410 4-3
H-4479 4-3
H10462 1-4
H18746 4-3
H25615 4-3

J

J12217 2-3

K

K-3801 1-3
K-3813 2-3, 4-3
K-3821 2-3
K-3830 4-3
K-4568 2-3
K-4788 3-3
K-5331 3-3
K-5333 2-3
K-5335 2-3
K-5336 2-3
K-5337 2-3
K-5340 2-5, 2-7
K-5341 2-5, 2-7
K-5342 2-3
K-5343 2-3
K-5345 1-3
K-5346 3-3
K-5347 1-3
K-5348 2-3
K-5349 3-3
K-5350 2-3
K-5351 2-3
K-5352 2-3
K-5358 2-3
K-5362 2-3
K-5363 2-3
K-5365 2-3
K-5366 2-3
K-5367 1-3
K-5476 2-3
K-5477 2-3
K-5478 1-3
K-5486 2-3
K-5567 2-3
K-5685 4-3
K-5688 3-3
K-5690 1-3
K-5692 3-3
K-5693 3-3
K-5694 4-3
K-5695 1-3
K-5697 2-3
K-5700 3-3
K-5702 3-3
K-5703 3-3
K-5718 1-3
K-5806 4-3
K-5827 1-3
K11163 1-3
K11165 1-3
K11166 1-3
K11167 1-3
K12536 2-3
K12962 4-3

K15492 4-3
K18500 4-3
K18593 4-3
K21129 3-3
K21447 2-5, 2-7
K21986 2-5, 2-7
K24212 1-3
K24350 2-3
K25638 2-7
K25654 2-5, 2-7
K25655 2-3
K25656 2-3
K25657 2-3
K25658 2-3
K25837 2-3
K25838 2-3
K29160 6-2
K29164 6-2
K29165 6-2
K29170 1-3
K29177 6-2
K29464 3-3
K29976 4-3
K29977 4-3
K29978 4-3
K29979 4-3
K30753 5-3
K31994 5-3
K31995 5-3
K34954 2-7
K34960 2-5, 2-7
K37577 4-3
K37578 4-3
K37581 5-3
K40350 1-3
K40353 2-5
K40355 2-5
K40360 2-5
K40362 1-3
K40365 2-3
K47702 4-3

M

M-3388 2-3, 2-5, 2-7, 3-3

N

N19109 5-3
N19866 1-4
N19965 1-4
N19966 1-4
N19967 1-4
N19968 1-4
N19969 1-4
N24301 1-3
N25463 2-3

N31601 4-3
N34476 1-3
N34477 1-3
N34478 1-3
N34950 5-3

S

S-1115 2-3
S-1197 2-5, 2-7
S-1203 2-3
S-1311 3-3
S-239 2-3, 4-3
S-4730 2-3, 4-3
S-4785 1-3
S-711 2-3
S-748 2-3
S-752 2-5, 2-7, 3-3, 4-3
S-91 2-3
S10730 2-3

W

W-1039 1-3
W-131 1-4, 2-5, 2-7
W-1383 3-3
W-1416 3-3
W-1474 3-3
W-1475 3-3
W-1537 3-3
W-1538 3-3
W-187 2-5, 2-7
W-1902 2-3
W-3022 4-3
W-342 2-3
W-3687 3-3
W-4056 4-3
W-4181 1-3, 4-3
W-419 1-3
W-473 1-4
W-475 2-3
W-477 2-3, 2-5, 2-7
W-479 2-3
W-480 1-3, 4-3
W-481 3-3, 5-3
W-485 1-3
W-487 2-3, 2-5, 2-7
W-488 2-3
W-490 2-3
W-492 2-3
W-493 1-3
W-495 1-3
W-498 2-3
W-499 2-3, 2-5, 2-7
W-502 2-3
W-506 2-5, 2-7
W-509 1-3
W-513 1-3, 2-3
W-514 1-3, 2-3, 2-5, 2-7, 5-3

W-516 1-3, 2-3, 2-5, 2-7, 3-3, 5-3
W-517 2-3, 2-5, 2-7, 6-2
W-518 1-3
W-520 1-3, 2-3
W-522 1-3, 2-3
W-523 1-3, 2-3, 2-5, 2-7, 5-3
W-525 1-3, 2-3, 2-5, 2-7, 3-3
W-526 2-3, 2-5, 2-7, 6-2
W-527 1-3
W-538 2-3, 4-3
W-539 1-3, 5-3
W-540 2-3
W-546 1-3
W-554 2-3
W-558 1-3, 4-3
W-575 2-3
W-619 2-5, 2-7
W-793 2-5, 2-7
W-807 2-3
W-808 2-3
W-861 2-3
W14503 2-5, 2-7
W14504 2-3



Morris Industries (USA) Inc.

P.O. Box 1117

Minot, ND 58702-1117

Phone: 866-663-8515

Fax: 866-663-8535

Web www.morris-industries.com/proag

It is the policy of PROAG to improve its products whenever it is possible to do so. PROAG reserves the right to make changes or add improvements at any time without incurring any obligation to make such changes on machines sold previously.