



**MORRIS**  
ROD-WEEDER CO. LTD.

## HAY-HIKER "800"

### Parts Section

#### INDEX

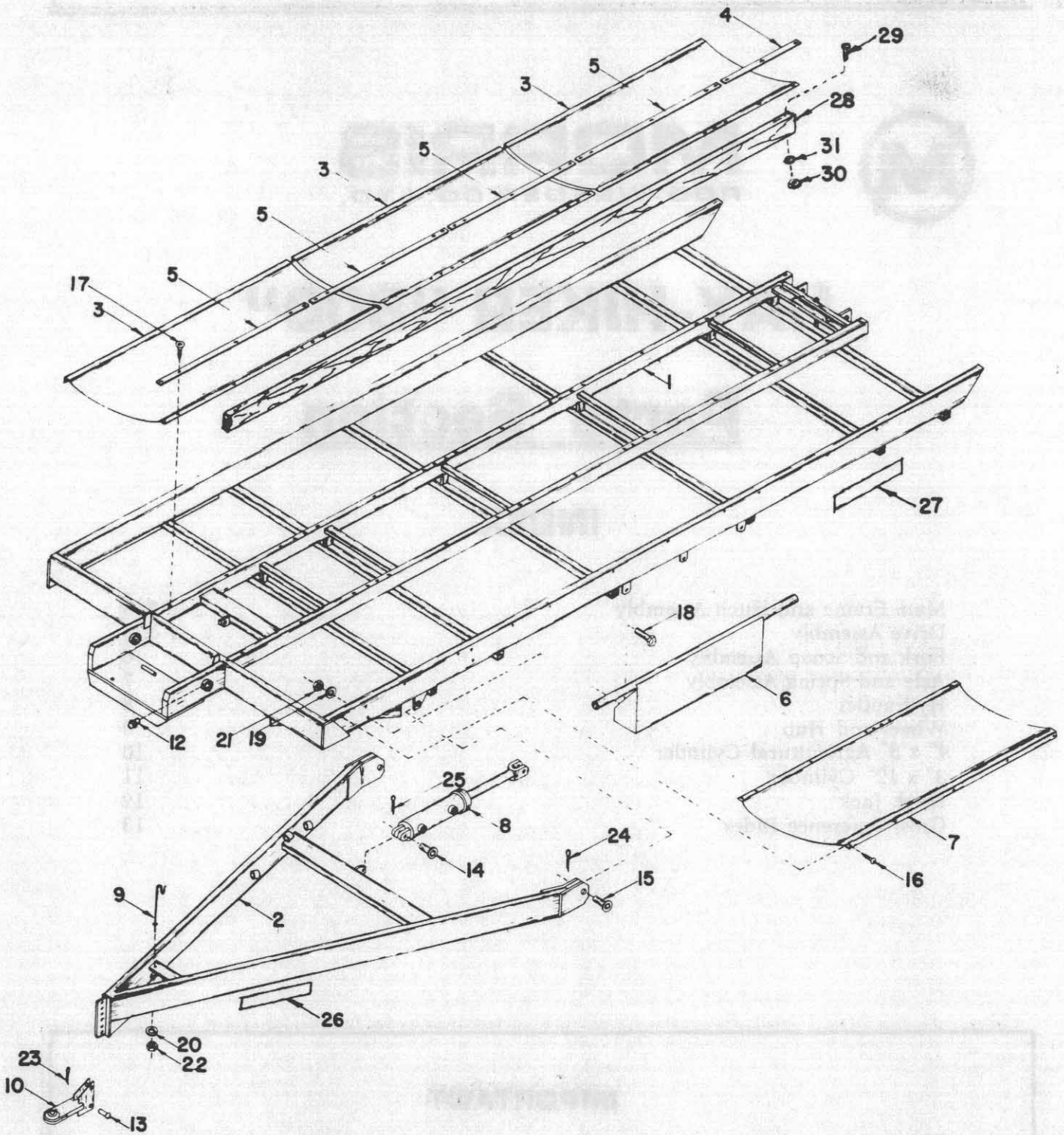
Main Frame and Hitch Assembly .....	2 & 3
Drive Assembly .....	4 & 5
Fork and Scoop Assembly .....	6
Axle and Spring Assembly .....	7
Hydraulics .....	8
Wheel and Hub .....	9
4" x 8" Agricultural Cylinder .....	10
3" x 12" Cylinder .....	11
Hitch Jack .....	12
Cross Reference Index .....	13

#### IMPORTANT

ALL PARTS ARE IDENTIFIED WITH AN ITEM NUMBER. Some of the smaller parts such as bolts, nuts, washers, etc., are not all shown, however the quantity used is listed in the text for that section which they fit into. That particular quantity is always the quantity required for one complete assembly.

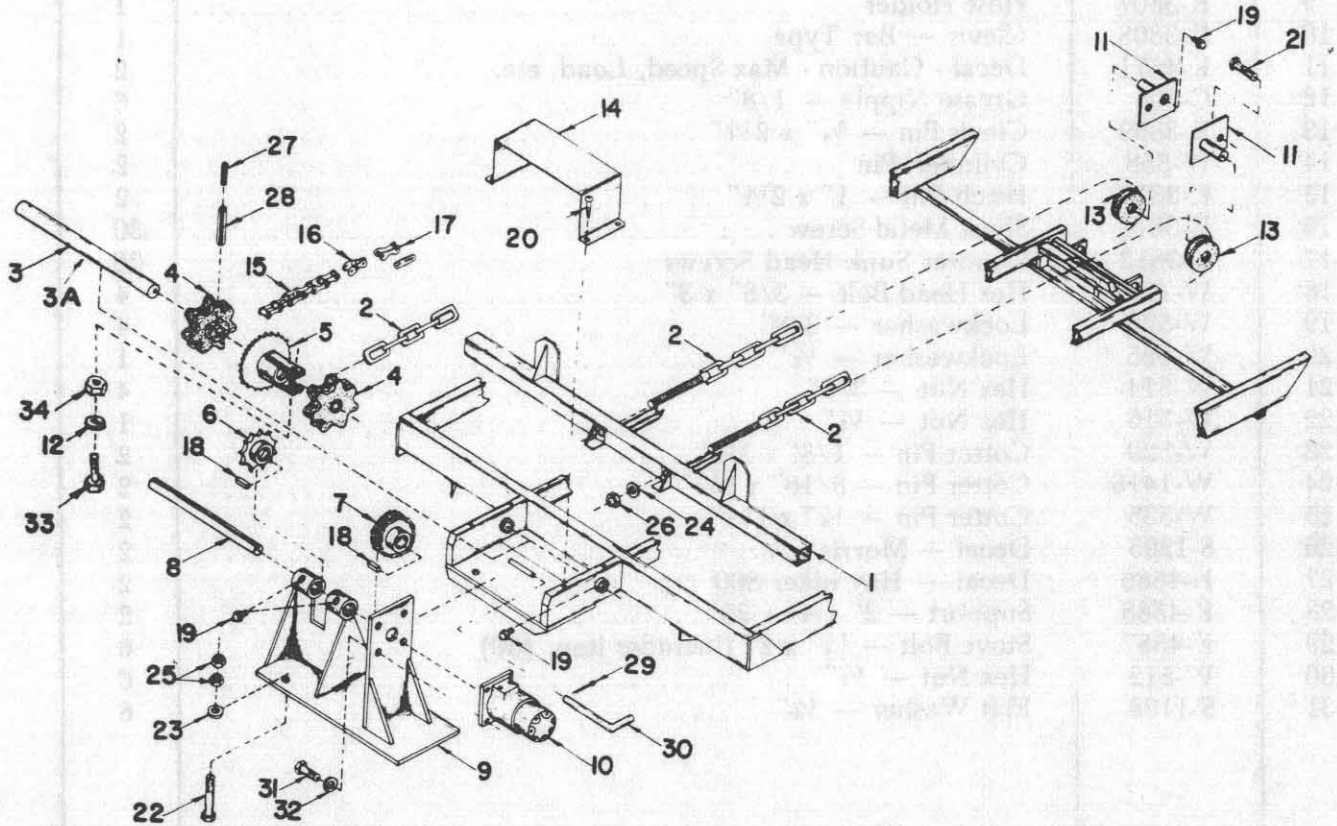
Smaller parts which are welded together to construct a larger part, are not to be ordered as individual pieces, unless they have a part number to identify them.

MAIN FRAME AND HITCH ASSEMBLY



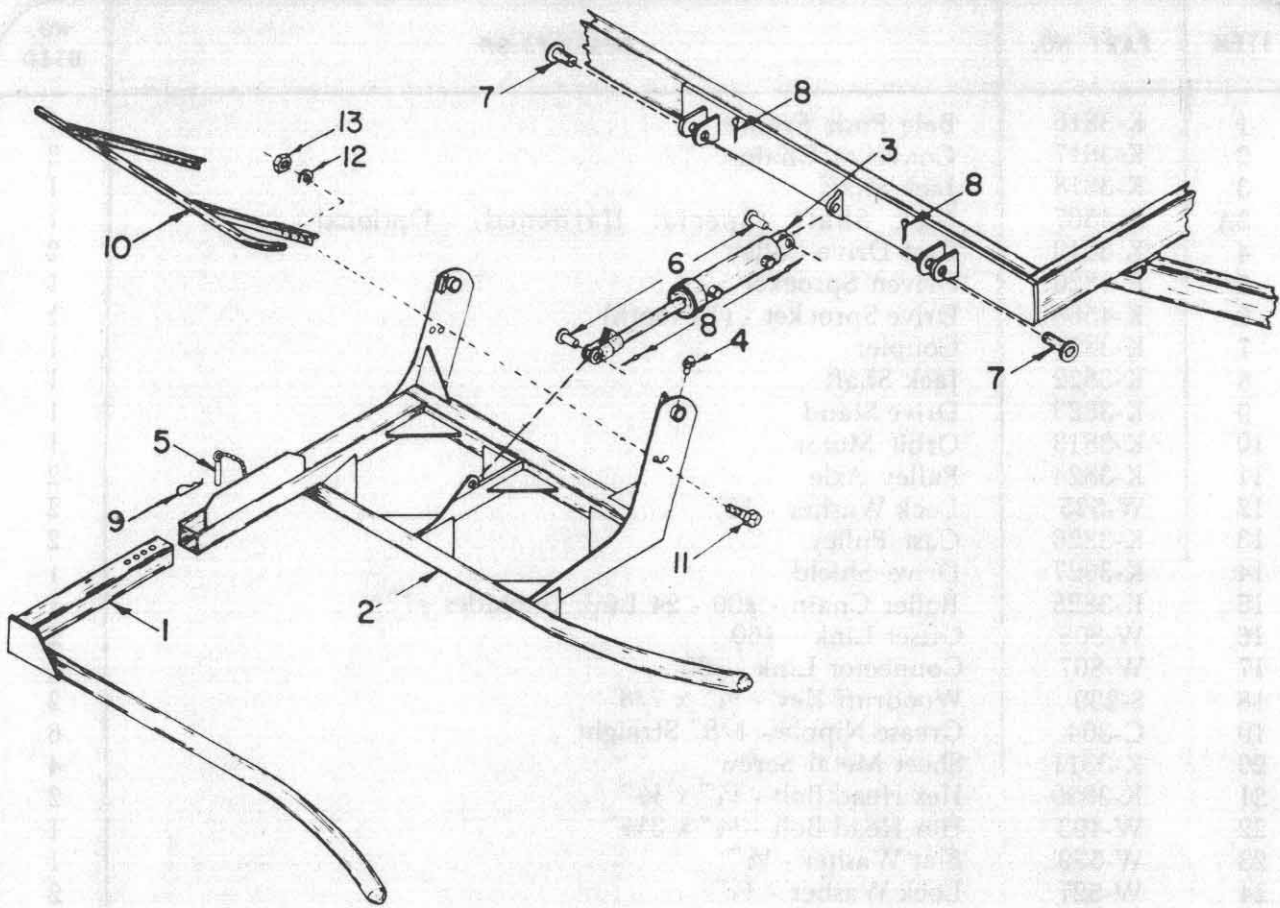
MAIN FRAME AND HITCH ASSEMBLY

ITEM	PART NO.	DESCRIPTION	NO. USED
1	K-3800	Main Frame .....	1
2	K-3801	Main Hitch .....	1
3	K-3802	Trough .....	5
4	K-3803	Wear Strip — Short .....	2
5	K-3804	Wear Strip — Long .....	6
6	K-3805	Bale Stopper .....	1
7	K-3806	Trough - Notched .....	1
8	C-2040	Cylinder — 3 x 12" (7.62 cm x 30.48 cm) .....	1
9	K-3807	Hose Holder .....	1
10	K-3808	Clevis — Bar Type .....	1
11	K-4571	Decal - Caution - Max Speed, Load, etc. ....	2
12	C-304	Grease Nipple — 1/8" .....	6
13	K-3809	Clevis Pin — 3/4" x 2 1/4" .....	2
14	W-558	Cylinder Pin .....	2
15	K-3810	Hitch Pin — 1" x 2 1/2" .....	2
16	K-3811	Sheet Metal Screw .....	30
17	K-3812	Counter Sunk Head Screws .....	36
18	W-1854	Hex Head Bolt — 3/8" x 3" .....	4
19	W-523	Lockwasher — 3/8" .....	4
20	W-525	Lockwasher — 1/2" .....	1
21	W-514	Hex Nut — 3/8" .....	4
22	W-516	Hex Nut — 1/2" .....	1
23	W-529	Cotter Pin — 1/8" x 1 1/4" .....	2
24	W-1416	Cotter Pin — 3/16" x 1 1/2" .....	2
25	W-535	Cotter Pin — 1/4" x 1 1/2" .....	2
26	S-1295	Decal — Morris .....	2
27	K-4586	Decal — Hay hiker 800 .....	2
28	K-4588	Support — 2" x 4" x 20' .....	2
29	K-4587	Stove Bolt — 1/4" x 2" (includes item #30) .....	6
30	W-512	Hex Nut — 1/4" .....	6
31	S-1198	Flat Washer — 1/4" .....	6

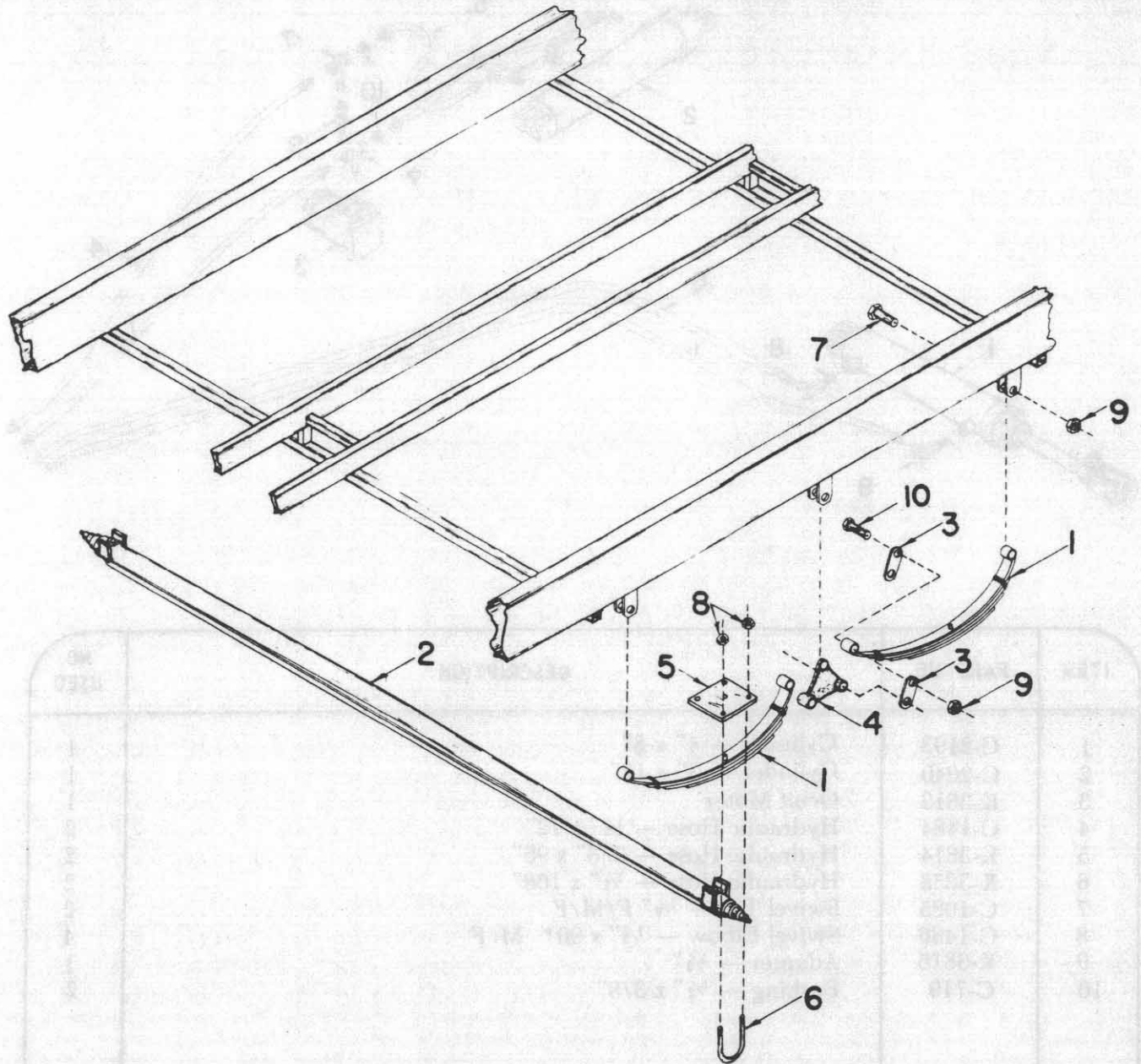


DRIVE ASSEMBLY

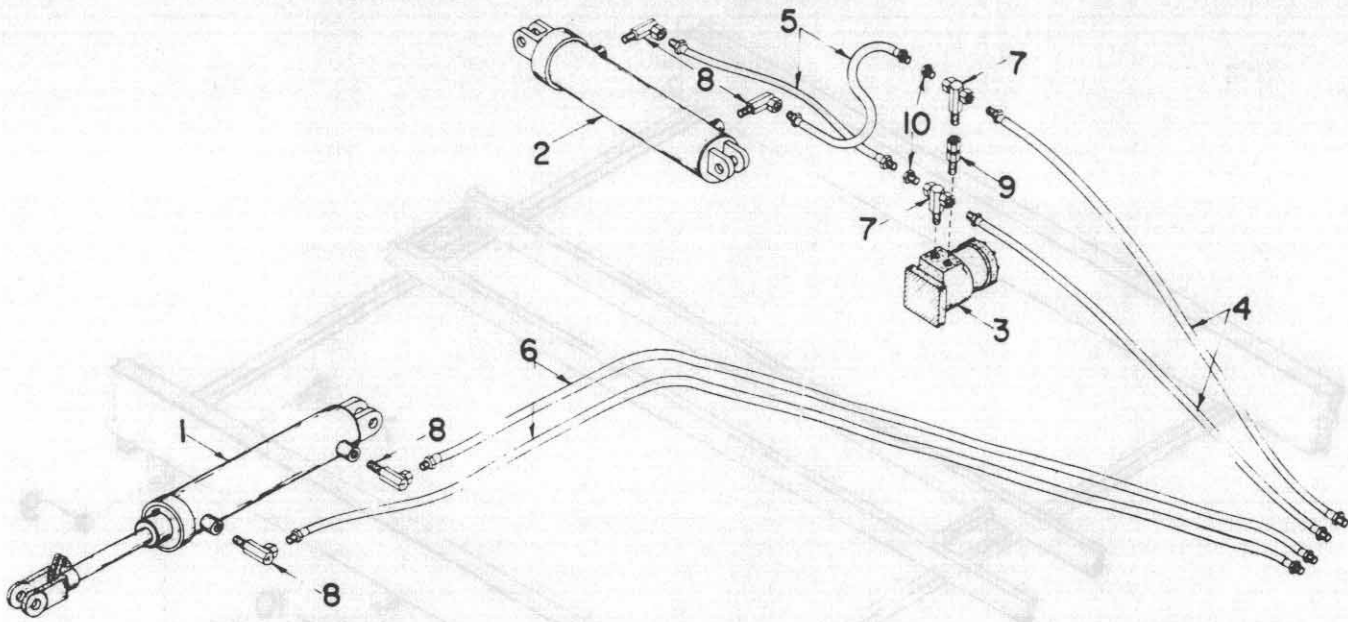
ITEM	PART NO.	DESCRIPTION	NO. USED
1	K-3816	Bale Push Frame	1
2	K-3817	Conveyor Chain	2
3	K-3818	Jack Shaft	1
3A	K-4567	Jack Shaft (Special Hardened) - Optional	1
4	K-3819	Cast Drive Pulley	2
5	K-3820	Driven Sprocket	1
6	K-4568	Drive Sprocket - (13 tooth)	1
7	K-3821	Coupler	1
8	K-3822	Jack Shaft	1
9	K-3823	Drive Stand	1
10	K-3813	Orbit Motor	1
11	K-3824	Pulley Axle	2
12	W-525	Lock Washer - 1/2"	2
13	K-3826	Cast Pulley	2
14	K-3827	Drive Shield	1
15	K-3828	Roller Chain - #60 - 24 Link (includes #17)	1
16	W-808	Offset Link - #60	2
17	W-807	Connector Link - #60	1
18	S-239	Woodruff Key - 1/4" x 7/8"	2
19	C-304	Grease Nipple - 1/8" Straight	6
20	K-3811	Sheet Metal Screw	4
21	K-3830	Hex Head Bolt - 1/4" x 1/2"	2
22	W-493	Hex Head Bolt - 1/2" x 3 1/2"	1
23	W-539	Flat Washer - 1/2"	1
24	W-527	Lock Washer - 3/4"	2
25	S-1292	Jam Nut - 1/2"	2
26	W-518	Hex Nut - 3/4"	2
27	K-3832	Roll Pin - 5/16" x 3"	1
28	K-3831	Roll Pin - 1/2" x 3"	1
29	W-1416	Cotter Pin - 3/16" x 1 1/2"	1
30	K-3859	"L"-Pin	1
31	W-475	Hex head Bolt - 3/8" x 1"	4
32	W-523	Lockwasher - 3/8"	4
33	W-1575	Hex Head Bolt - 1/2" x 5"	2
34	W-516	Hex Nut - 1/2"	2



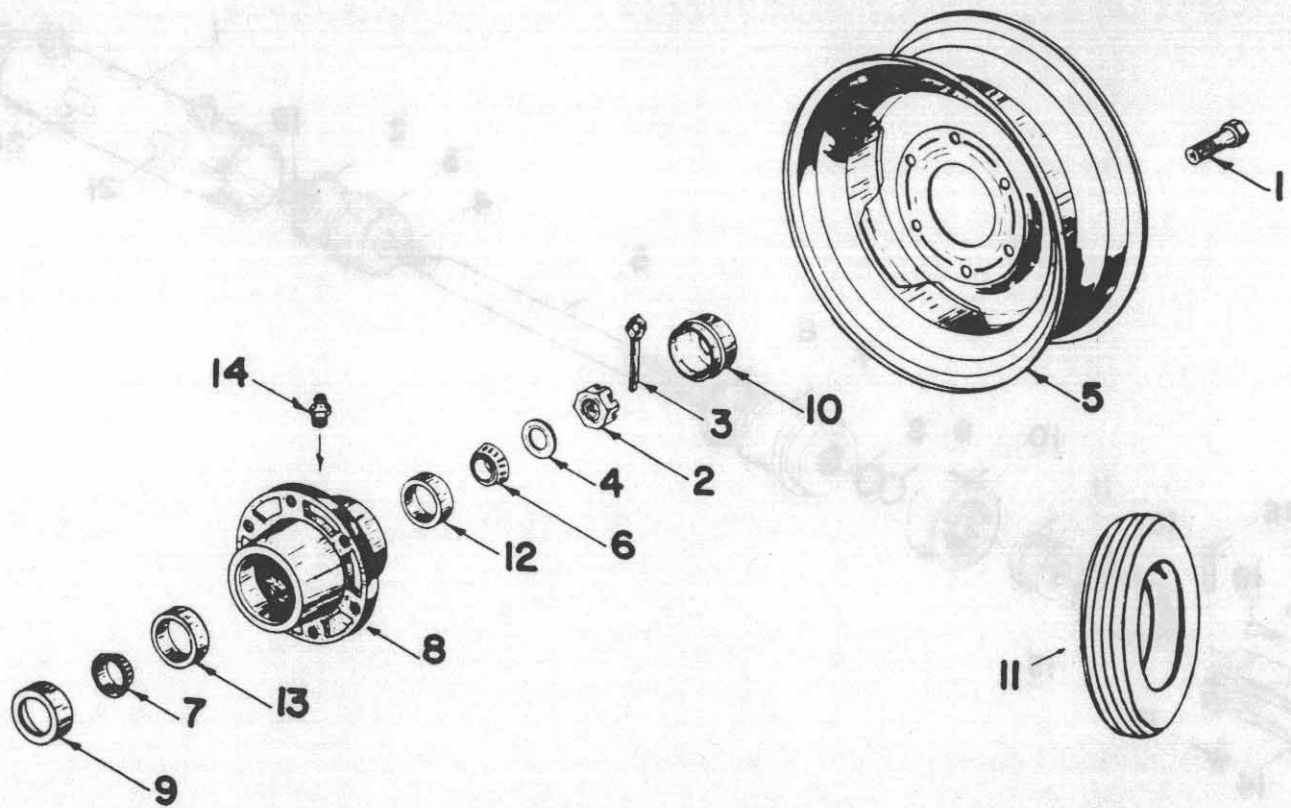
ITEM	PART NO.	DESCRIPTION	NO. USED
1	K-3851	Outer Fork .....	1
2	K-3852	Inner Fork .....	1
3	C-2193	Cylinder — 4" x 8" .....	1
4	C-304	Grease Nipple — 1/8" Straight .....	2
5	K-3856	Locking Pin .....	1
6	W-558-S	Cylinder Pin (Complete with grease nipple) .....	2
7	K-3857	Hinge Pin — 1" x 3-7/8" .....	2
8	W-1416	Cotter Pin — 3/16" x 1 1/2" .....	4
9	W-131	Hair Pin .....	1
10	K-4574	Deflector Bar .....	1
11	W-487	Hex Head Bolt - 1/2" x 1 3/4" .....	4
12	W-525	Lock Washer - 1/2" .....	4
13	W-516	Hex Nut - 1/2" .....	4



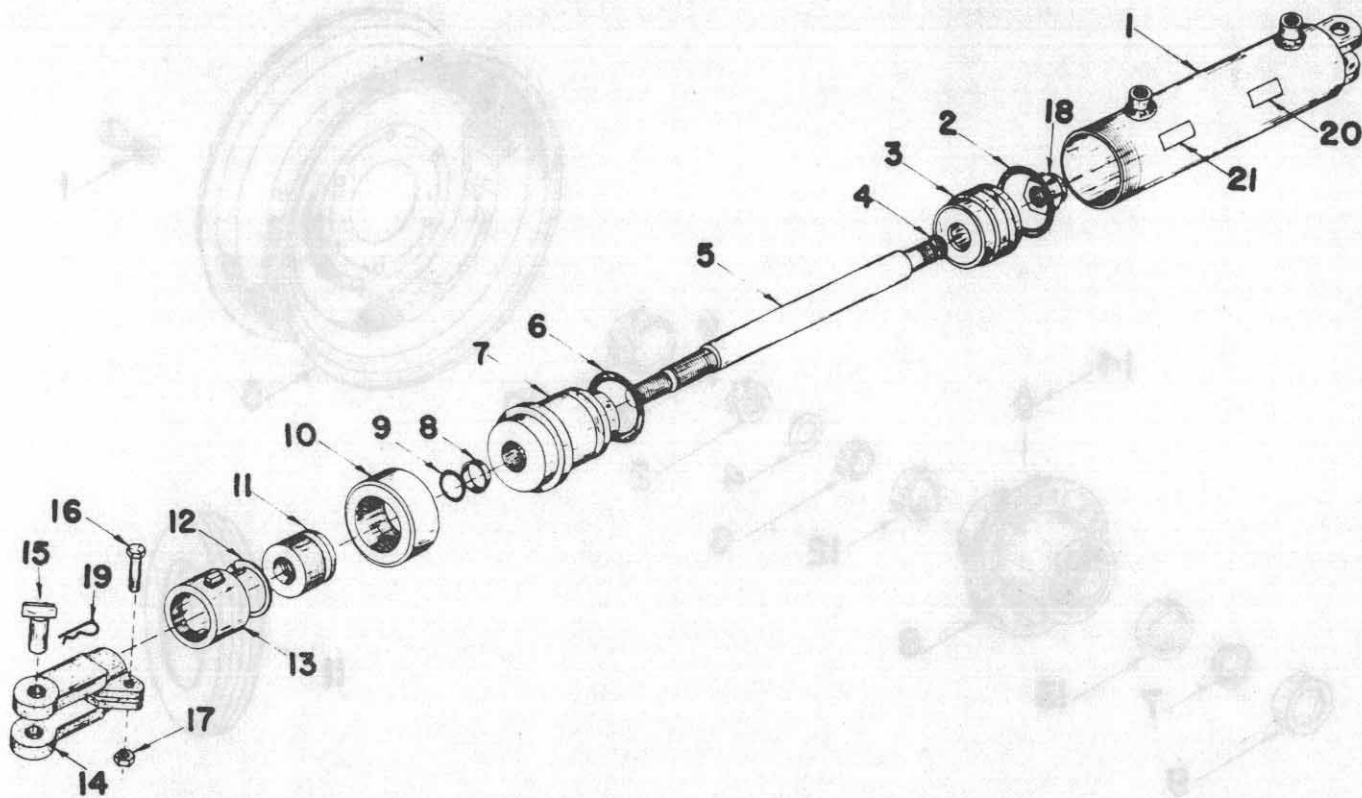
ITEM	PART NO.	DESCRIPTION	NO. USED
1	K-3845	Spring .....	4
2	K-3846	Axle .....	2
3	K-3847	Hanger Plate .....	8
4	K-3848	Joining Member .....	2
5	K-3849	Plate .....	4
6	K-3850	"U" Bolt .....	8
7	C-3016	Hex Head Bolt — 5/8" x 3" .....	14
8	W-516	Hex Nut — 1/2" .....	16
9	W-1472	Lock Nut — 5/8" .....	14
10	K-4575	Shackle Bolt — 9/16" x 3" (Incl. Self Locking Nuts) .....	16



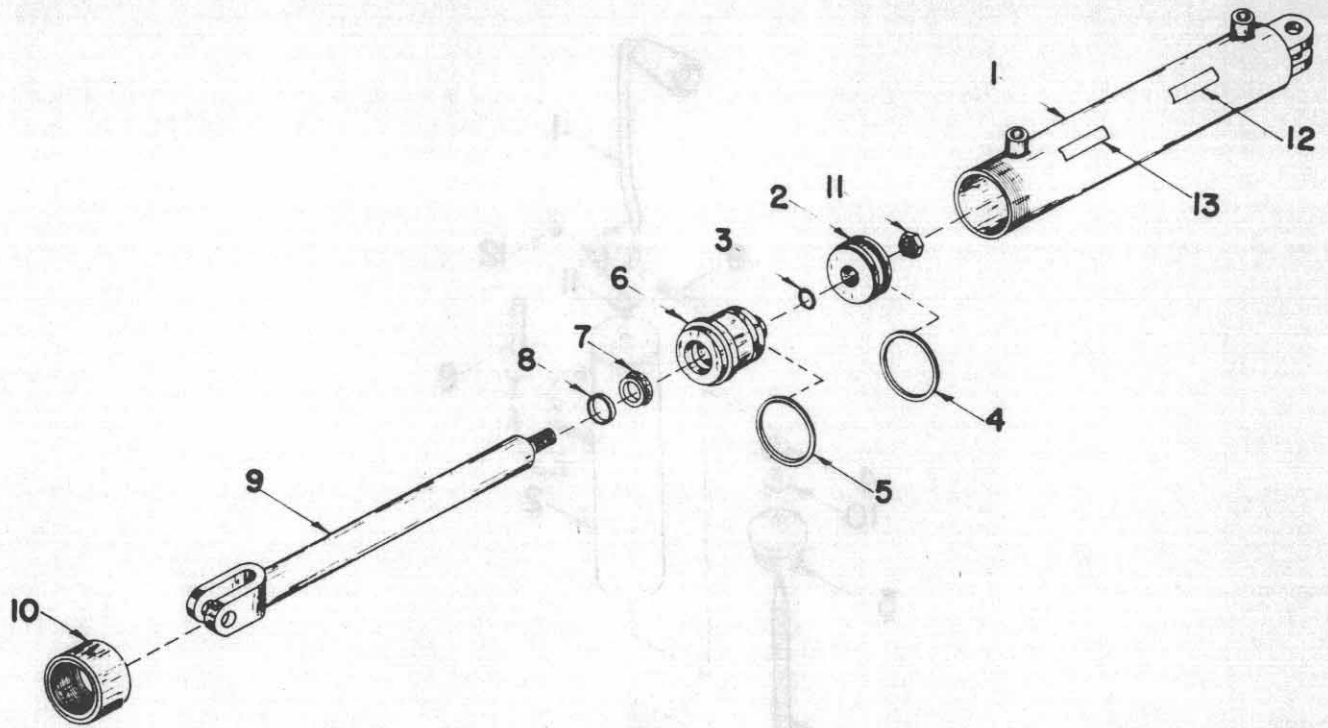
ITEM	PART NO.	DESCRIPTION	NO. USED
1	C-2193	Cylinder — 4" x 8"	1
2	C-2040	Cylinder — 3" x 12"	1
3	K-3813	Orbit Motor	1
4	C-1484	Hydraulic Hose — ½" x 72"	2
5	K-3814	Hydraulic Hose — ¾" x 96"	2
6	K-3858	Hydraulic Hose — ½" x 168"	2
7	C-1985	Swivel Tee — ½" F/M/F	2
8	C-1486	Swivel Elbow — ½" x 90° M/F	4
9	K-3815	Adapter — ½"	1
10	C-719	Bushing — ½" x ¾"	2



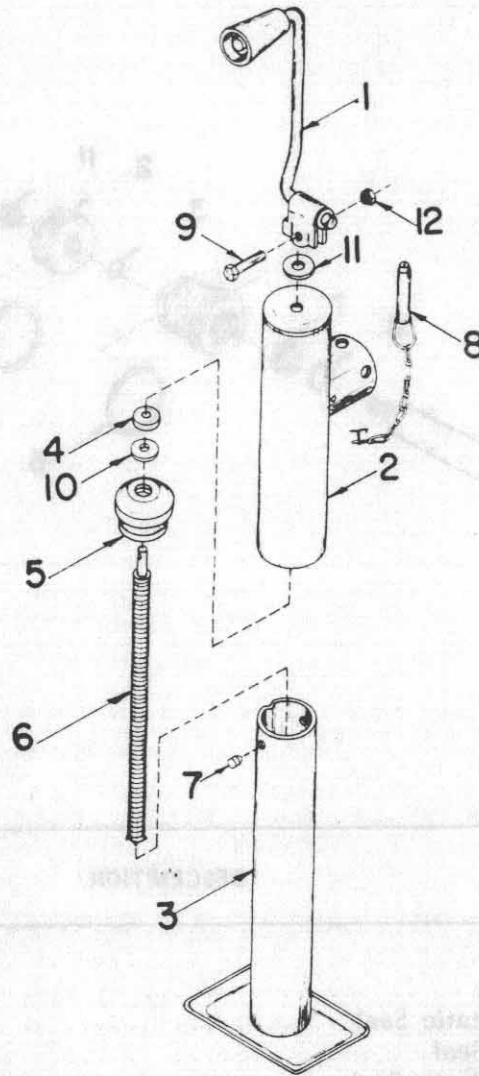
ITEM	PART NO.	DESCRIPTION	NO. USED
1	W-1383	Wheel Stud Bolt — 9/16" x 1-11/16"	24
2	S-1311	Slotted Nut — 1" Sae	4
3	W-1416	Cotter Pin — 3/16" x 1 1/2"	4
4	C-3258	Washer — 2" O.D. x 1-1/16" x 3/16"	4
5	C-1473	6 Bolt Rim — 15" x 8"	4
6	W-1474	Bearing — LM48548	4
7	W-1475	Bearing — LM603049	4
8	C-1463	Hub — H-79-4660 (Includes Item #12, 13 & 14)	4
9	C-1521	Seal — C/R 20085	4
10	C-1522	Dust Cap	4
11	K-3833	8 Ply Tire — 11L x 15	4
12	W-1537	Bearing Cup — LM-48510	4
13	W-1538	Bearing Cup — LM603011	4
14	S-752	Grease Nipple — 1/4" N.P.T. Straight	4



ITEM	PART NO.	DESCRIPTION	NO. USED
1	C-2192	Barrel	1
2	C-2030	Piston Seal - 3½ O.D. x 3/16"	1
3	C-2031	Piston	1
4	C-2016	Shaft Static Seal - 7/8" O.D. x 1/16"	1
5	C-2011	Shaft	1
6	C-2025	Gland Static Seal - 3½" O.D. x 3/16"	1
7	C-2026	Gland	1
8	C-2008	Shaft Seal	1
9	C-2007	Shaft Wiper	1
10	C-2023	Collar	1
11	C-2004	Inner Stroke Control Sleeve	1
12	C-2005	Snap Ring	1
13	C-2006	Outer Stroke Control Sleeve	1
14	C-2003	Shaft Clevis	1
15	W-558	Cylinder Pin	2
16	W-477	Hex Head Bolt - 3/8" x 1½"	1
17	W-514	Hex Nut - 3/8"	1
18	C-2017	Shaft Nut - Cleveloc 7/8"	1
19	BW-11	Hair Pin	2
20	C-2019	Caution Sticker	1
21	C-2194	Part No. Plate	1
	C-2193	Cylinder Assembly (Includes all above items)	
	C-2021	Seal Kit (Includes items 2, 4, 6, 8 & 9)	



ITEM	PART NO.	DESCRIPTION	NO. USED
1	C-2047	Barrel .....	1
2	C-2014	Piston .....	1
3	C-2016	Shaft Static Seal .....	1
4	C-2015	Piston Seal .....	1
5	C-2012	Gland Static Seal .....	1
6	C-2010	Gland .....	1
7	C-2008	Shaft Seal .....	1
8	C-2007	Shaft Wiper .....	1
9	C-2027	Shaft .....	1
10	C-2009	Collar .....	1
11	C-2017	Shaft Nut .....	1
12	C-2019	Caution Sticker .....	1
13	C-2048	Part No. Plate .....	1
	C-2040	Cylinder Assembly (includes all above items) .....	
	C-2002	Seal Kit (includes items 3, 4, 5, 7 & 8) .....	



ITEM	PART NO.	DESCRIPTION	NO. USED
1	K-3834	Handle Assembly (Includes Items #9 and #12)	3
2	K-3835	Sleeve — 700-061	1
3	K-3836	Base — 700-052	1
4	K-3837	Bearing — 001-001	1
5	K-3838	Nut — 008-004	1
6	K-3839	Screw — 012-002	1
7	K-3840	Retainer — 000-003	1
8	K-3841	Pin w/Retention Ball — 500-123 (Incl. Chain)	2
9	W-1552	Hex Head Bolt — 1/4" x 1"	1
10	K-38-42	Flat Washer - 5/16" I.D. x 1-1/8" O.D. — 016-003	1
11	K-3843	Flat Washer — 5/8" I.D. x 1-3/8" O.D.— 016-002	1
12	K-3844	Jam Nut — 1/4"	1
	K-4572	Screw Replacement Kit (Incl. Items 6, 5, & 10)	
	K-3861	Jack Assembly (Includes all above items)	

## Cross Reference Index

PART NO.	PAGE	ITEM NO.	PART NO.	PAGE	ITEM NO.	PART NO.	PAGE	ITEM NO.	PART NO.	PAGE	ITEM NO.
BW-11	10	19	C-2019	10	20	K-3845	7	1			
W-131	6	9	C-2023	10	10	K-3846	7	2			
S-239	5	18	C-2025	10	6	K-3847	7	3			
C-304	3	12	C-2026	10	7	K-3848	7	4			
W-475	5	31	C-2027	11	9	K-3849	7	5			
W-477	10	16	C-2030	10	2	K-3850	7	6			
W-493	5	22	C-2031	10	3	K-3851	6	1			
W-512	3	30	C-2040	3	8	K-3852	6	2			
W-514	3	21	C-2047	11	1	K-3856	6	5			
W-516	3	22	C-2048	11	13	K-3857	6	7			
W-518	5	26	C-2192	10	1	K-3858	8	6			
W-523	3	19	C-2193	6	3	K-3859	5	30			
W-525	3	20	C-2194	10	21	K-4568	5	6			
W-527	5	24	C-3016	7	7	K-4571	3	11			
W-529	3	23	C-3258	9	4	K-4574	6	10			
W-535	3	25	K-3800	3	1	K-4575	7	10			
W-539	5	23	K-3801	3	2	K-4586	3	27			
W-558	3	14	K-3802	3	3	K-4587	3	29			
C-719	8	10	K-3803	3	4	K-4588	3	28			
S-752	9	14	K-3804	3	5						
W-807	5	17	K-3805	3	6						
W-808	5	16	K-3806	3	7						
S-1198	3	31	K-3807	3	9						
S-1292	5	25	K-3808	3	10						
S-1295	3	26	K-3809	3	13						
S-1311	9	2	K-3810	3	15						
W-1383	9	1	K-3811	3	16						
W-1416	3	24	K-3812	3	17						
C-1463	9	8	K-3813	5	10						
W-1472	7	9	K-3814	8	5						
W-1473	9	5	K-3815	8	9						
W-1474	9	6	K-3816	5	1						
W-1475	9	7	K-3817	5	2						
C-1484	8	5	K-3818	5	3						
C-1486	8	8	K-3819	5	4						
C-1521	9	9	K-3820	5	5						
C-1522	9	10	K-3821	5	7						
W-1537	9	12	K-3822	5	8						
W-1538	9	13	K-3823	5	9						
W-1552	12	9	K-3824	5	11						
W-1575	5	33	K-3826	5	13						
W-1854	3	18	K-3827	5	14						
C-1985	8	7	K-3828	5	15						
C-2003	10	14	K-3830	5	21						
C-2004	10	11	K-3831	5	28						
C-2005	10	12	K-3832	5	27						
C-2006	10	13	K-3833	9	11						
C-2007	10	9	K-3834	12	1						
C-2008	10	8	K-3835	12	2						
C-2009	11	10	K-3836	12	3						
C-2010	11	6	K-3837	12	4						
C-2011	10	5	K-3838	12	5						
C-2012	11	5	K-3839	12	6						
C-2014	11	2	K-3840	12	7						
C-2015	11	4	K-3841	12	8						
C-2016	10	4	K-3843	12	11						
C-2017	10	18	K-3844	12	12						

